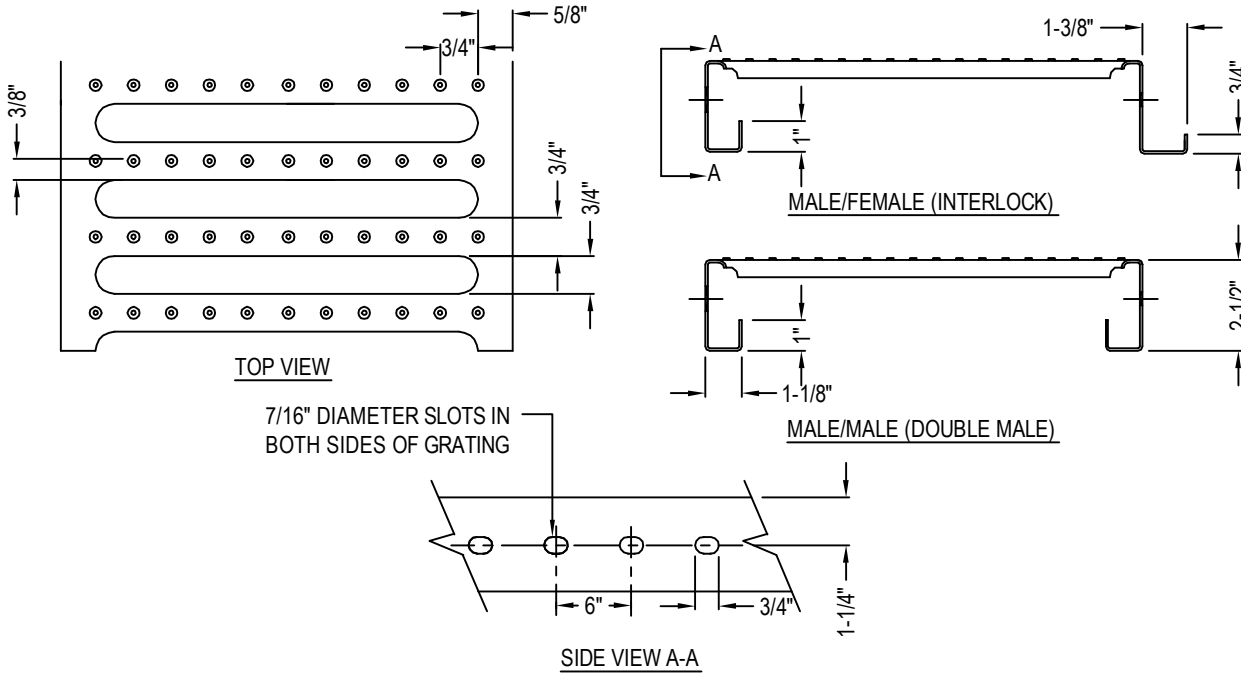




DESIGN COMPONENTS INC / METALWALK
 115 WALTER WAY
 FAYETTEVILLE, GA 30214
 PHONE: (800) 868-9910
 FAX: (770) 460-7872
 www.rooftopwalkway.com



**MAXIMUM ALLOWABLE
 CONCENTRATED LOAD (lbs/sf)**

SIMPLY SUPPORTED SPAN				
LENGTH (ft.)	3'-0"	4'-0"	5'-0"	6'-0"
WEIGHT (lbs.)	529*	529	501	420

- (1) LOADS ARE CONTROLLED BY BENDING STRENGTH (DEFLECTION < L/240)
 - (2) ALL LOADS ARE TOTAL LOADS (DEAD WEIGHT OF GRATING MUST BE SUBTRACTED TO OBTAIN LIVE LOAD)
 - (3) LOAD VALUES CAN BE INCREASED BY AT LEAST 50% WHEN GRATING SECTIONS INTERLOCK TOGETHER
- *LOAD CONTROLLED BY 2" END BEARING STRENGTH (DEFLECTION < L/240)

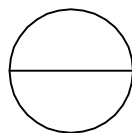
**FASTENER
 PERFORMANCE DATA**

PULLOUT VALUES (average lbs. ultimate)					
FASTENER		STEEL GAUGE			
SIZE	POINT	24	18	14	12
12-14	Teks/3	211	551	1063	1631

STRENGTH CHARACTERISTICS				
FASTENER		TENSILE	SHEAR	TORQUE
SIZE	POINT	(lbs.min.)	(avg.lbs.ult.)	(min.in.lbs.)
12-14	Teks/3	2778	2000	92

NOTES:

1. INSTALLATION TO BE COMPLETED IN ACCORDANCE WITH MANUFACTURER'S SPECIFICATIONS.
2. DO NOT SCALE DRAWING.
3. THIS DRAWING IS INTENDED FOR USE BY ARCHITECTS, ENGINEERS, CONTRACTORS, CONSULTANTS AND DESIGN PROFESSIONALS FOR PLANNING PURPOSES ONLY. THIS DRAWING MAY NOT BE USED FOR CONSTRUCTION.
4. ALL INFORMATION CONTAINED HEREIN WAS CURRENT AT THE TIME OF DEVELOPMENT BUT MUST BE REVIEWED AND APPROVED BY THE PRODUCT MANUFACTURER TO BE CONSIDERED ACCURATE.
5. CONTRACTOR'S NOTE: FOR PRODUCT AND COMPANY INFORMATION VISIT www.CADdetails.com/info AND ENTER REFERENCE NUMBER 5018-008.



ROOFTOP METALWALK SYSTEM - TRAPEZOID SSR

METALWALK® GRATING SPECS.

