



STEEL CANOPIES



Optional 2-Tone Color Shown Above
STANDARD: Rear draining back to the wall
OPTIONAL: Front Facing Drain Holes (Upon Request)

SPECIFICATIONS

WIND LOAD

180 mph (IBC 2018)

4' Projection - Max Allowable Uplift = 102.5

5' Projection - Max Allowable = 84.6

SNOW LOAD

4' Projection 34 psf

5' Projection 26 psf

(50 psf, 75 psf, 100psf available upon request)

CONSTRUCTION

- Constructed of 24 Ga. painted steel or .032 embossed aluminum material around a 16 Ga. Galvanized frame
- Steel Telescoping support channels mount between girts on the interior of the building
- Channels will accommodate girt spacing up to 6'
- 1/2" Galv. pipe hangers with adjustable rod ends connects channels to canopy frame
- All hardware necessary for installation is included

DESIGN

- Incorporates a flat soffit and an integral gutter drain
- Rear mounted drains release water against the building to the outside of door jams
- Can be installed in conjunction with any wall panel type or masonry construction
- Long continuous run applications available

FINISH

- All standard metal building colors available
- Silicone Polyester (standard)
- Kynar (optional)
- Single (standard) or Two-tone available (optional)

STANDARD SIZES

- 3', 4', 5' projection
- 4'-6" width for single doors
- 7'-6" width for double doors
- Any continuous run length available (10'-0" Max Sections)

OPTIONS

- Masonry mount (anchors by others)
- Downspouts
- Front mounted drains
- LED Light Kits



LED LIGHTED CANOPIES



Optional 2-Tone Color Shown Above
STANDARD: Rear draining back to the wall
OPTIONAL: Front Facing Drain Holes (Upon Request)

SPECIFICATIONS

WIND LOAD

180 mph (IBC 2018)

4' Projection - Max Allowable Uplift = 102.5

5' Projection - Max Allowable = 84.6

SNOW LOAD

4' Projection 34 psf

5' Projection 26 psf

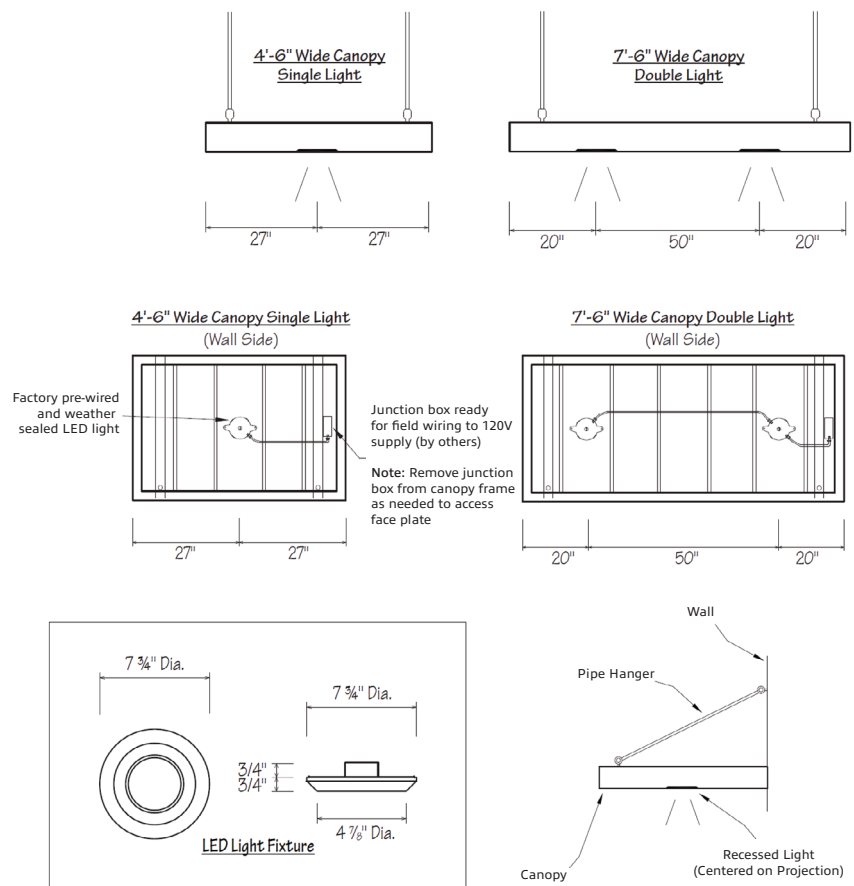
(50 psf, 75 psf, 100psf available upon request)

All Steel Canopy Features Plus:

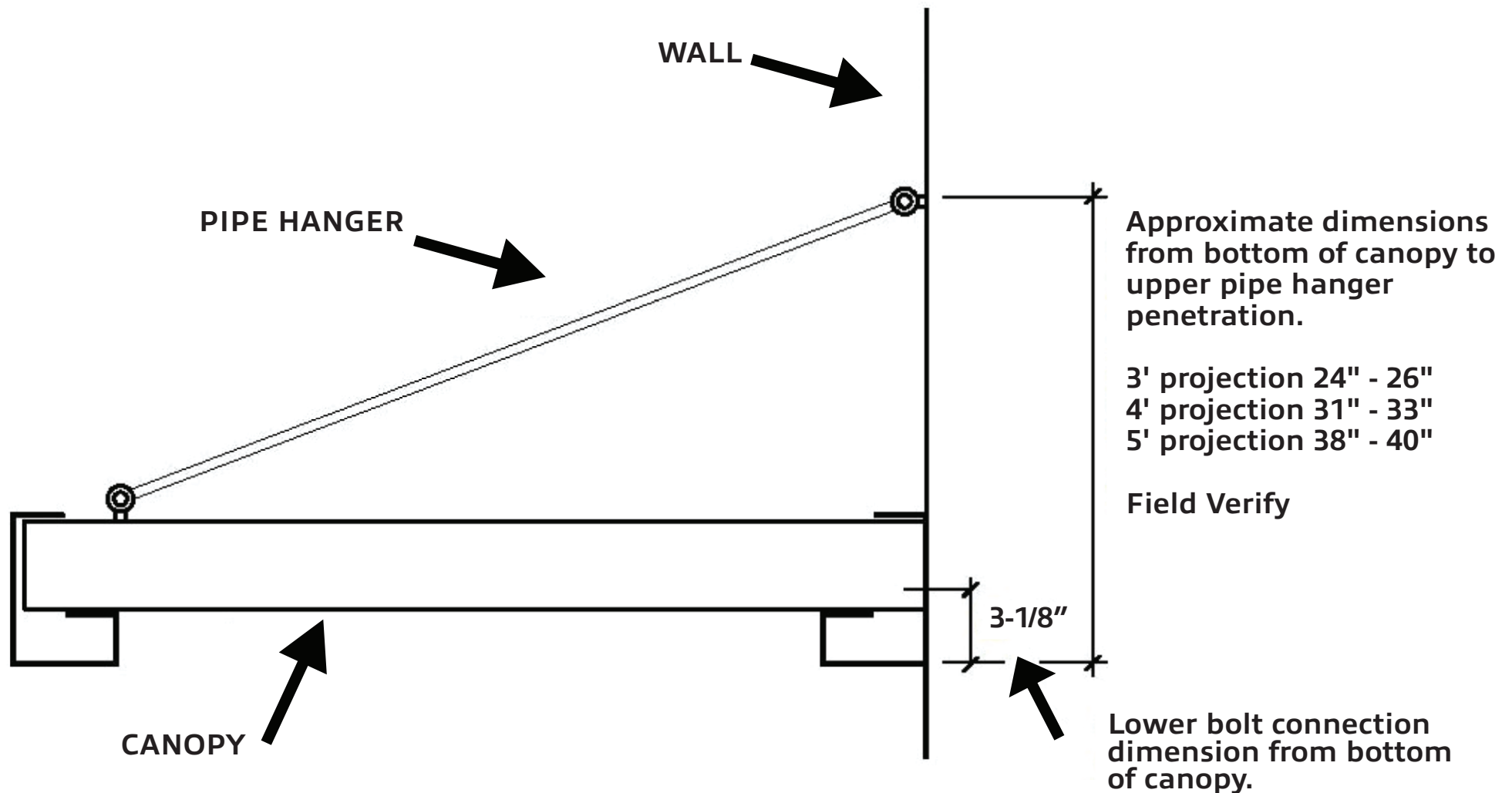
CONSTRUCTION

- Single door contains one LED light in the center of soffit panels, double door contains two LED lights 20" from the edge width
- Wet rated LED downlight provides uniform luminance(120V, 780 lumens, 4000K color temperature) from a low profile flat lens
- LED lifetime of 50,000 hours
- ENERGY STAR-certified luminaire contains no mercury or lead
- Precision molded lens features high transmission polymer with UV stabilized protecting film
- Fixture mounted in soffit of canopy and sealed to top-mounted junction box
- Electrical contractor must ensure of fit, wiring and proper mounting in the electrical junction box. This includes all applicable national and local codes.

TECHNICAL SPECIFICATIONS



HANGER PENETRATION DIMENSIONS



CANOPY INSTALLATION INSTRUCTIONS - METAL PANEL APPLICATIONS

Note: Additional support columns and pipe hangers may be required for larger canopies and/or higher wind loads.

STEP 1: Install Vertical Support Columns

Note: Install vertical support columns to girt framing. (Girt spacing max 6'0")

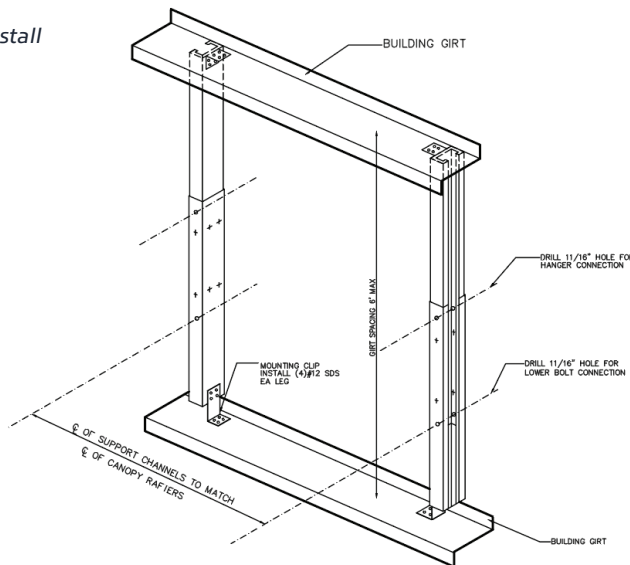
1A – Center canopy over door. If necessary, shift canopy toward door knob so that pipe hangers penetrate in the high or low areas of panel. When the canopy is positioned at the desired location match drill 11/16" holes through pre-drilled canopy angle holes. (These holes are aligned with the center of the zee rafter holes used for the pipe hangers at the wall attachment angle of the canopy.)

1B – Align centerline of support columns with 11/16" holes drilled in step 1.a and centerline of zee rafters on canopy between girts. Make sure support columns are perpendicular to top and bottom girt. Attach mounting clips to each end of telescoping support columns with (4) #12 SDS per clip. Slide adjust columns to proper length in order to fit between girts (6' maximum). Secure columns to girts with (4) #12 SDS per clip. Install (2) #12 SDS in the web and (1) in each flange at top and bottom of overlap in channels.

STEP 2: Install Lower Support Bolts

2A – Match drill through previously drilled holes in wall panel through centerline of support columns.

Support Column Install



2B – With canopy repositioned and matching holes in canopy and wall panel aligned, attach canopy to wall panel and support column using 5/8" x 7" bolt with washer. (If hole penetrates the high rib of the panel, use PVC spacer between wall panel and support column.) (Typical each side.) **Note:** Before tightening bolts, apply sealant at penetration points.

STEP 3: Attach Pipe Hangers to Canopy

3A – Thread 5/8" nut on the short rod end, slide on 5/8" washer and insert into hole on top of canopy rafter. Secure with 5/8" nuts and washers on underside of rafter. (Typical for each pipe hanger.)

STEP 4: Attach Pipe Hangers to Wall

4A – Locate the elevation at the point where long rod end will penetrate the wall. Drill 11/16" hole through panel and support columns. Thread 5/8" nut on long rod end and slide on 5/8" washer. Insert long rod through wall panel and support columns. Secure at support column with 5/8" nuts and washers.

Note: Before tightening bolts, apply sealant at penetration points.

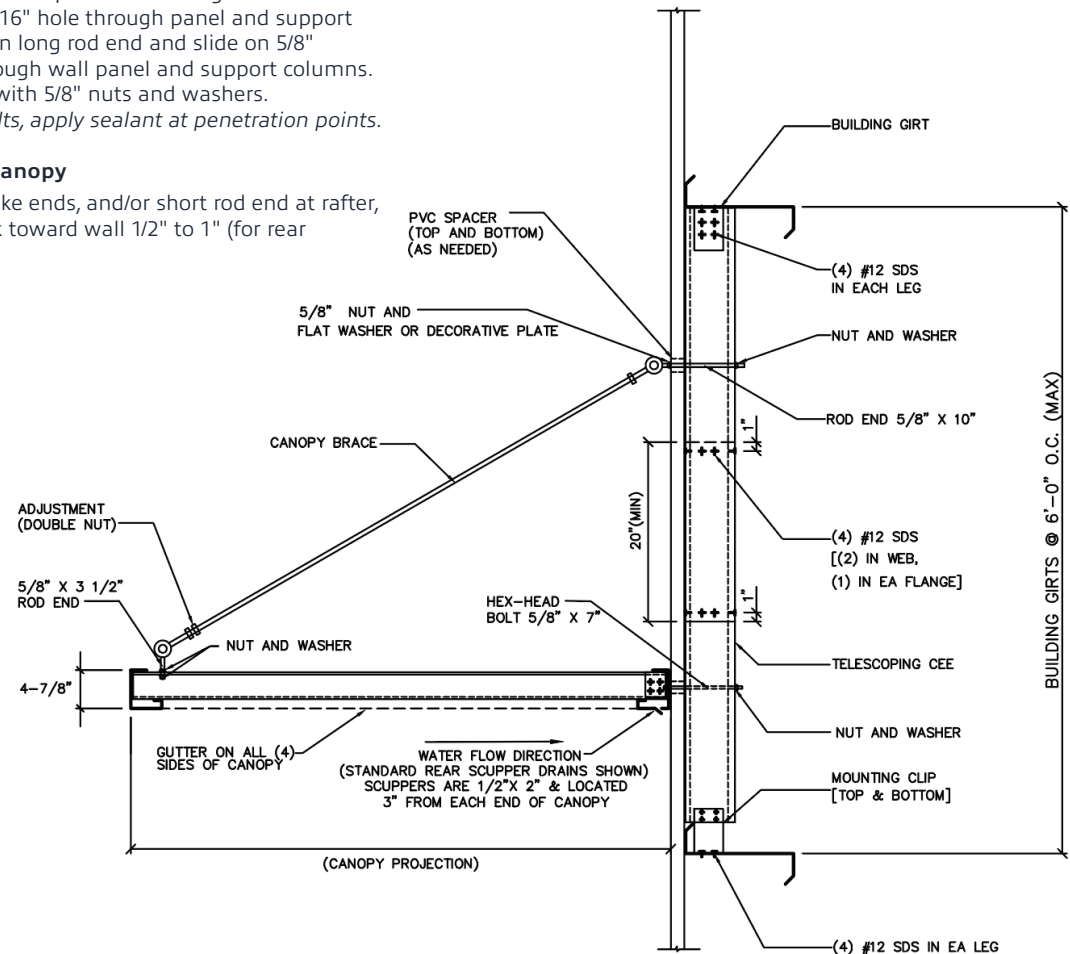
STEP 5: Adjust Pitch of Canopy

5A – Adjust pipe hanger yoke ends, and/or short rod end at rafter, so the canopy slopes back toward wall 1/2" to 1" (for rear mounted drains).

Metal Wall Install

(One hardware kit per hanger)

- (1) Pipe Hanger
- (1) 3-1/2" X 5/8" Rod End
- (1) 10" X 5/8" Rod End
- (1) 2pc Telescoping Channel
- (2) 12ga Channel Clips
- (24) #12 X 3/4" Screws
- (1) 7" X 5/8" Hex Bolt
- (5) 5/8" Nuts
- (6) 5/8" Washers
- (2) PVC Spacers



CANOPY INSTALLATION INSTRUCTIONS - MASONRY APPLICATIONS

Note: Additional pipe hangers may be required for larger canopies and/or higher wind loads.

STEP 1: Install Lower Support Bolts

1A – Center canopy over door. Mark well at locations where pre-attached canopy rafter angle holes meet wall.

1B – Drill holes in masonry and install wall anchors sized to accept 5/8" bolts and appropriate design for masonry type. Note: Wall anchors by others.

1C – Insert 5/8" x 3" bolt with washer through canopy angle and into wall anchor.

STEP 2: Attach Pipe Hangers to Canopy

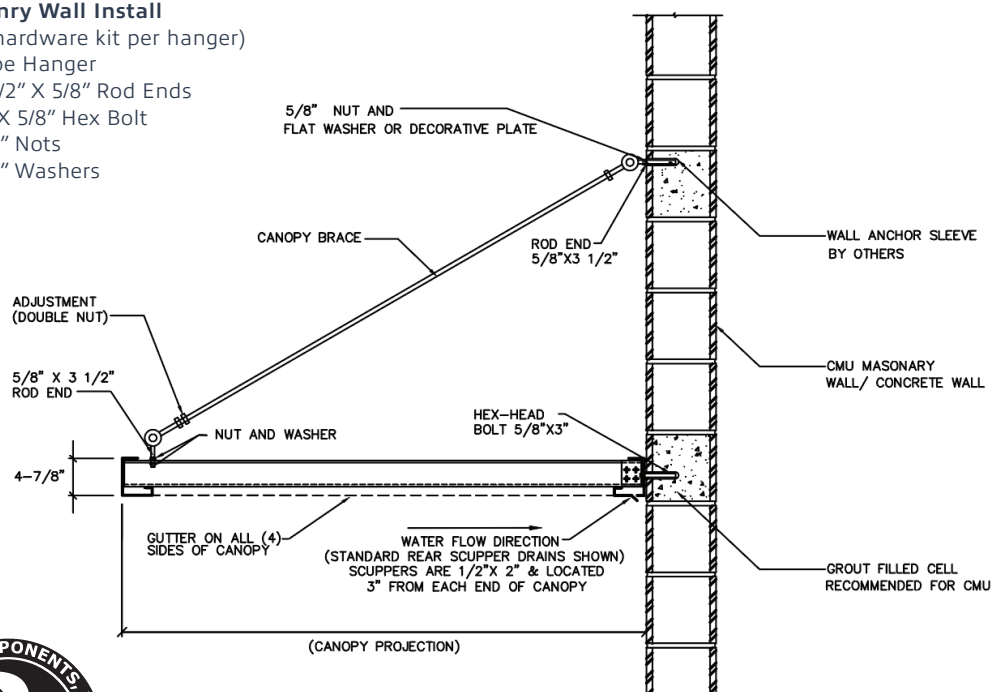
2A – Thread 5/8" nut on one end of the pipe hanger rod end, slide on 5/8" washer and insert into hole on top of canopy rafter.

2B – Secure with 5/8" nuts and washers on underside of rafter.

Masonry Wall Install

(One hardware kit per hanger)

- (1) Pipe Hanger
- (2) 3-1/2" X 5/8" Rod Ends
- (1) 3" X 5/8" Hex Bolt
- (4) 5/8" Nuts
- (4) 5/8" Washers



STEP 3: Attach Pipe Hangers to Wall

3A – Locate elevation at the point where opposite rod end will penetrate the wall.

3B – Drill holes in masonry and install wall anchors sized to accept 5/8" bolts and appropriate design for masonry. Note: Wall anchors by others.

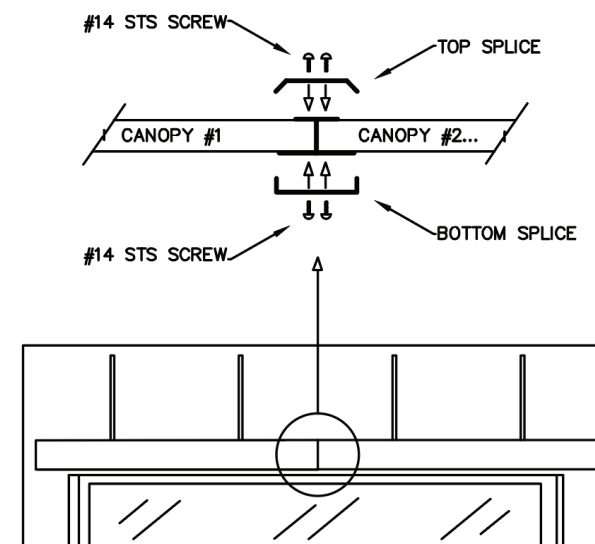
3C – Insert 5/8" x 3.5" thread rod end into wall anchor.

3D – Attach rod end to pipe hanger with clevis pin.

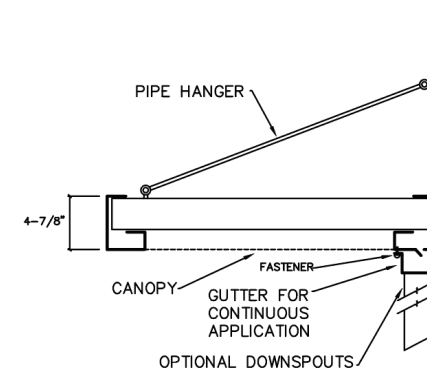
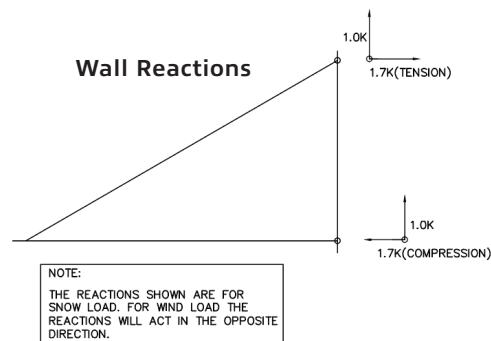
STEP 4: Adjust Pitch of Canopy

4A – Adjust pipe hanger yoke ends, and/or short rod end at rafter, so the canopy slopes back toward wall 1/2" to 1" (for rear mounted drains).

Multiple Canopy Install



Wall Reactions



MBCI ARCHITECTURAL COLOR CHART

SIGNATURE® 200

STANDARD COLORS

Siliconized Polyester

Polar White is a Straight Polyester.

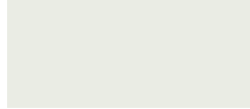
Galvalume Plus® also available.



★ ENERGY STAR® Qualified



BURNISHED SLATE★



POLAR WHITE★



CHARCOAL GRAY★



LIGHT STONE★



HAWAIIAN BLUE★



RUSTIC RED★



KOKO BROWN★



FERN GREEN★



COAL BLACK★



SOLAR WHITE★

SIGNATURE® 300

STANDARD COLORS

Polyvinylidene Fluoride (PVDF);

Low Gloss

★★ Minimum quantities and/or extended lead times required. Please inquire.



HARBOR BLUE★



COLONIAL RED★



MEDIUM BRONZE★



PACIFIC BLUE★



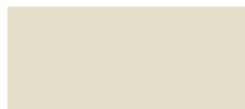
NATURAL PATINA★★



SNOW WHITE★



SLATE GRAY★



ALMOND★



MIDNIGHT BRONZE★



CLASSIC GREEN★



EVERGLADE★★



BROWNSTONE★



TUNDRA★



SPRUCE★★



HUNTER GREEN★



BRITE RED★★



BONE WHITE★