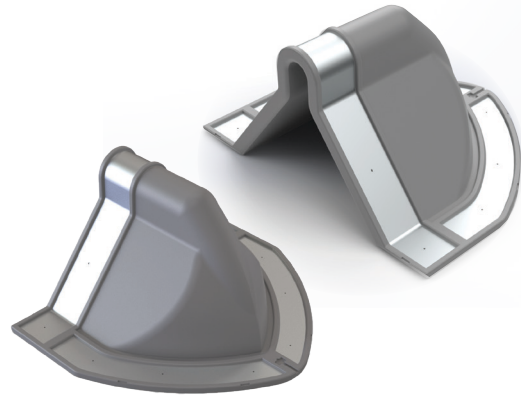




## DEK-CAP® FLASHING



THE ONLY UNIVERSAL END CAP FLASHING

## SPECIFICATIONS

### CONSTRUCTION

- Gray Thermal Elastomer Rubber
- Flexible, corrosion resistant aluminum base conforms to majority of standing seam roof panels

### HEAT RESISTANCE

- Continuous temperature range of – 40° F to 250° F
- Thermal Elastomer material provides excellent resistance to ozone, ultra-violet light as well as extreme temperatures

### DESIGN

- Allows use on left and right handed seams
- Pre-formed panel shape reduces installation time
- Fastening locations are clearly indicated for accuracy
- Dual underside ridges provide maximum sealing
- Expansion notch provides added flexibility
- Interior panel stop ensures correct installation position

### STANDARD SIZES

- 7-1/4" wide x 5-3/4" long x 3-15/16" high

### ACCESSORIES

#### Recommended Sealant:

- Sikaflex® -201, a one part component, Polyurethane multi-purpose caulk by Silka Corporation

#### Recommended Fasteners:

- Scots® 300 Series Stainless Steel long life fastener by ITW Buildex (Tek 1 HWH 1/4-14 x 1-1/8")

### APPLICATIONS

- New and retrofit construction
- Metal roof curbs and skylights
- Ridge vents and ridge caps
- Wall-to-roof

# DEK-CAP® TECHNICAL DATA

## PERFORMANCE DATA

ASTM METHOD	TEST DESCRIPTION	SPECIFICATIONS	RESULTS
<b>D412</b>	Tensile Strength (min. psi rating)	1450 psi min.	1500 psi
<b>D412</b>	Ultimate Elongation (%)	350 min.	450
<b>D1171</b>	Resistance to Ozone – min. rating	100 (no cracks)	Passed
<b>D673</b>	Heat Aging – 70 hrs. at 212° F <ul style="list-style-type: none"> <li>• Change in Hardness (points)</li> <li>• Change in Tensile Strength (%)</li> <li>• Change in Elongation (%)</li> </ul>	+/- 15 max. +/- 30 max. +/- 50 max.	+ 3 + 2 - 3
<b>D2137</b>	Low Temperature Brittleness 3 min. @ -40° F	Non-brittle	Passed
<b>D624</b>	Tear Resistance Die C (min.) per in. of width min.	125 lbs./in. width	130 lbs.

## INSTALLATION

STEP 1	STEP 2	STEP 3	STEP 4	STEP 5	STEP 6
					
Bend top so that both sides are parallel to metal roof.	Press Dek-Cap edges into contours of panel configuration.	Remove flashing & apply sealant on underside of flexible aluminum edging.	Slide Dek-Cap flashing over panel profile.	Follow indicated fastening pattern and attach Dek-Cap with fasteners.	Apply additional sealant around base if desired.