



## DESIGN COMPONENTS, INC.

115 Walter Way - Fayetteville, GA 30214  
 ph: (800) 868-9910  
 fx: (770) 460-7872  
 email: sales@designcomponents.com  
 website: www.designcomponents.com

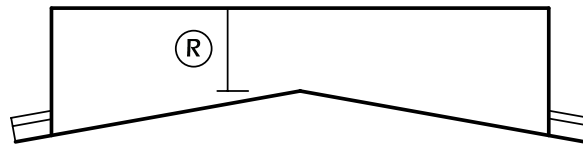
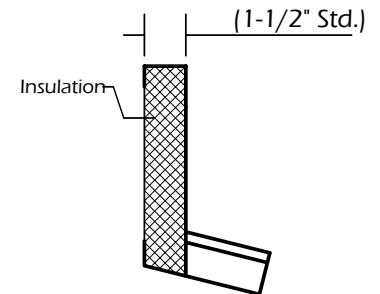
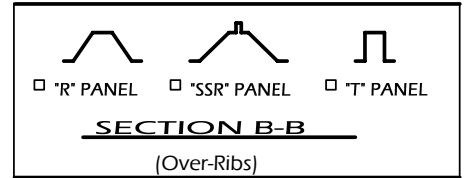
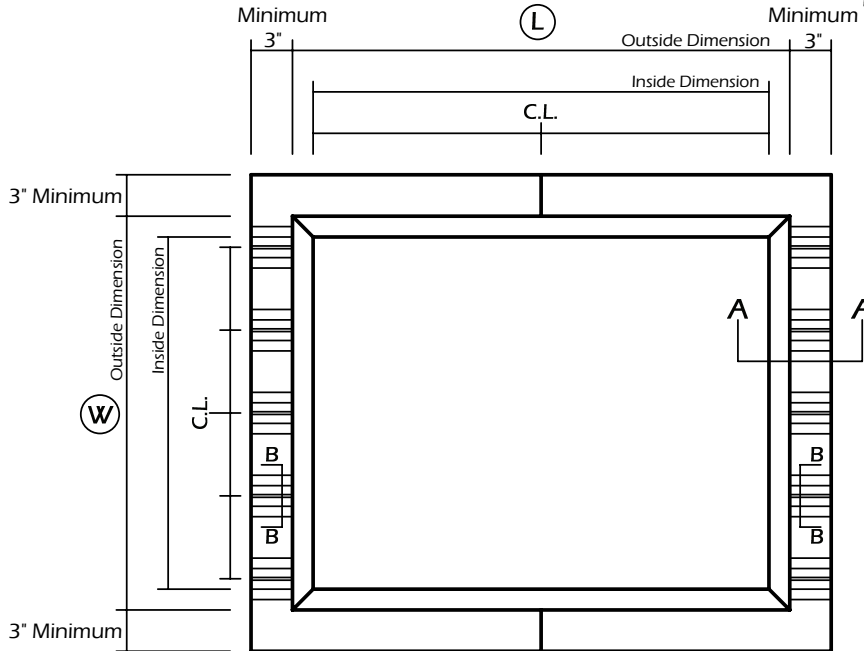
## METAL BUILDING ROOF CURB RIDGE MOUNT - WELDED RIBS

(800) 868-9910

<p><b>Metal Building Roof Curb - Ridge Mounted</b></p> <p><u>STANDARD FEATURES:</u></p> <ol style="list-style-type: none"> <li>1. 18 Ga. AZ55 Galvalume Steel.</li> <li>2. Corners Mitered and Welded Watertight.</li> <li>3. Curb welds primed after Fabrication.</li> <li>4. 8" Minimum Height.</li> <li>5. Internal Angle Reinforcing.</li> <li>6. 1 1/2" Thick, 3# Density Fiberglass Insulation.</li> </ol> <p><u>OPTIONS:</u></p> <ol style="list-style-type: none"> <li>1.</li> <li>2.</li> <li>3.</li> <li>4.</li> </ol>	<p>PROJECT NAME: _____</p> <p>CITY, STATE: _____</p> <p>CUSTOMER: _____</p> <p>_____</p> <p>_____</p> <p>JOB NUMBER: _____</p>
--	--

Note: The Front, Rear, and Side Flanges Fit Over the Roof Panel

RIBS TO MATCH THIS ROOF PANEL \_\_\_\_\_



ELEVATION

SECTION A-A

QUANTITY	INSIDE DIMENSION	OUTSIDE DIMENSION "W" x "L"	HEIGHT "R"	TAG
	x	x		
	x	x		
	x	x		
	x	x		
	x	x		