

# STEEL LOUVERS



**SINGLE SECTION**



**DOUBLE SECTION**

## LOUVER SPECIFICATIONS

- **FIXED LOUVERS:**

- Frames constructed from 18 gauge Galvanized steel and welded watertight.
- Blades roll-formed from 20 gauge Galvanized steel.
- 4" deep with blades riveted to frame at 45° angle.
- Fixed blade louvers have 55% free area

- **ADJUSTABLE LOUVERS:**

- 4" deep roll-formed blades with plated twin link pivot brackets riveted to blade and connected with 1/4" zinc plated rod assembled with brass pivot and set screw.
- Adjustable louvers have 77% free area fully opened.
- Standard with hand crank or chain operator.

### FIXED OR ADJUSTABLE LOUVERS:

- **DESIGN:**

- Designed specifically for Metal Building wall panels to have a self-framing recessed head and tapered sill along with self-flashing jambs for standard "R" and "A" type panels. This design allows the louvers to be installed alone, one above the other or side by side, without the need for mullions or frames.
- Insect screen is standard 18/16 aluminum mesh installed in an extruded removable, re-wireable aluminum frame.

- **FINISH:**

Mill Finish or electrostatically applied polyester paint, 2 mil thick baked finish to match most metal building colors.

- **OPTIONS:**

- "C" channel or flange frame available for masonry or framed opening.
- Hardware cloth or 3/4" Bird screen available.
- 115/1/60 motor actuators with linkage for single or multiple sections

*SPECIAL SHAPES, MATERIAL & FINISHES AVAILABLE*

**CALL FOR CURRENT PRICING**



**DESIGN COMPONENTS, INC.** Serving the Metal Building Industry since 1978

115 Walter Way

Fayetteville, GA 30214

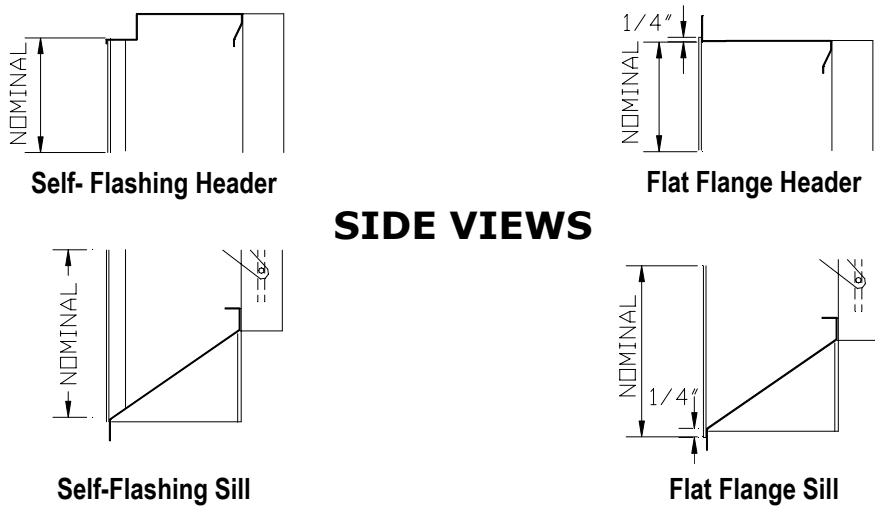
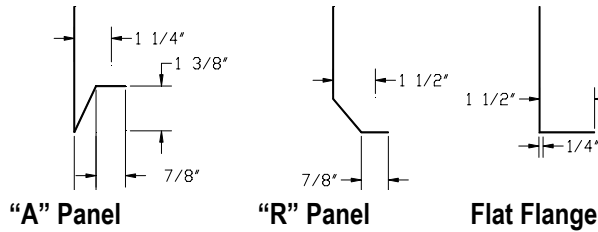
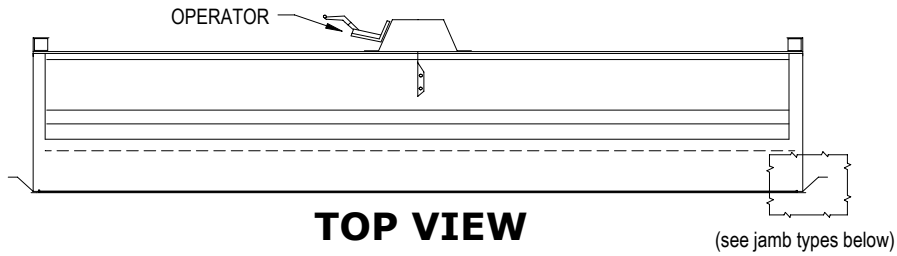
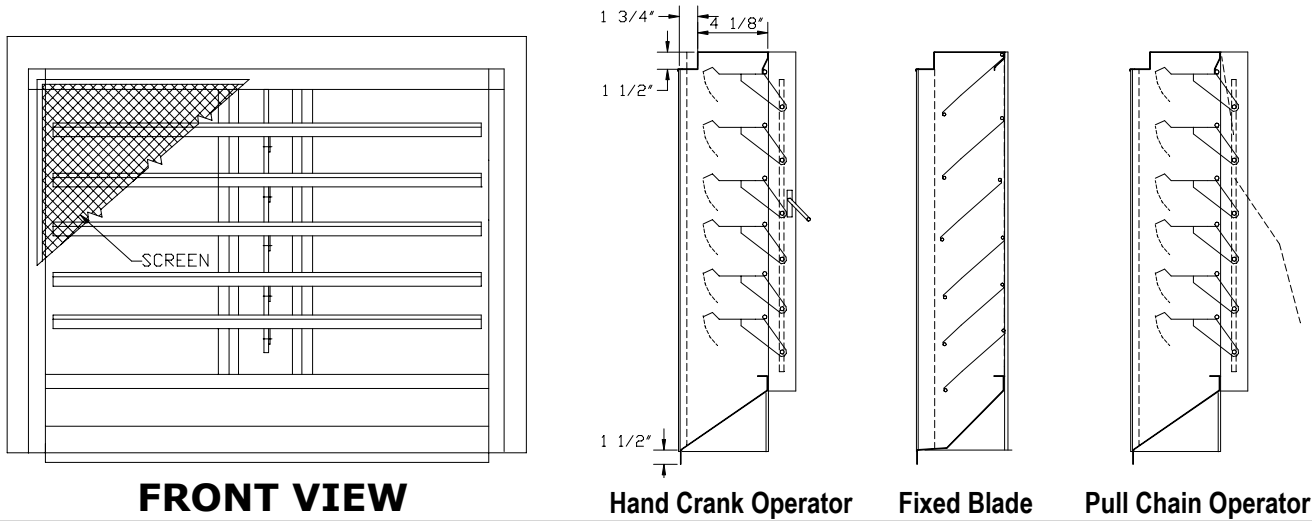
email: [sales@designcomponents.com](mailto:sales@designcomponents.com)

PH (800) 868-9910

FX (770) 460-7872

website: [www.designcomponents.com](http://www.designcomponents.com)

# SELF-FLASHING LOUVER DETAILS



**DESIGN COMPONENTS, INC.** Serving The Metal Building Industry Since 1978

115 Walter Way	Fayetteville, GA 30214	email: sales@designcomponents.com
PH (800) 868-9910	FX (770) 460-7872	website: www.designcomponents.com