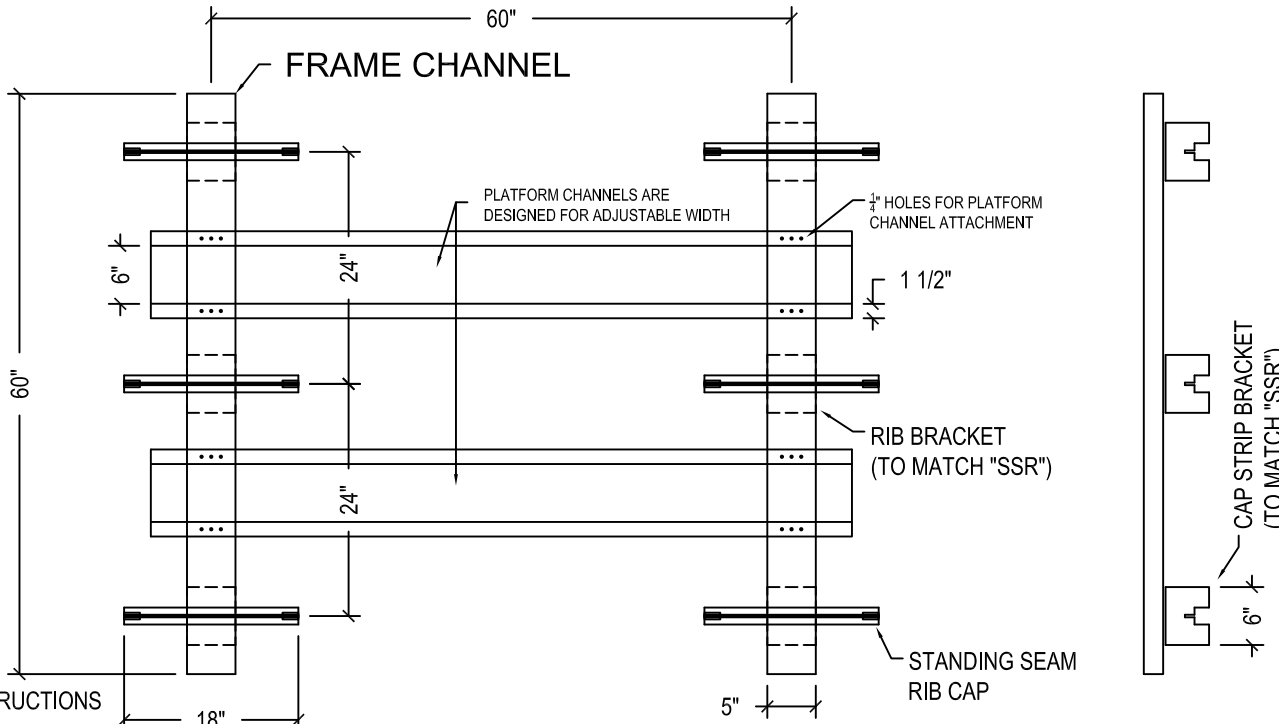


Drawing Date:

REV:

Approved By:



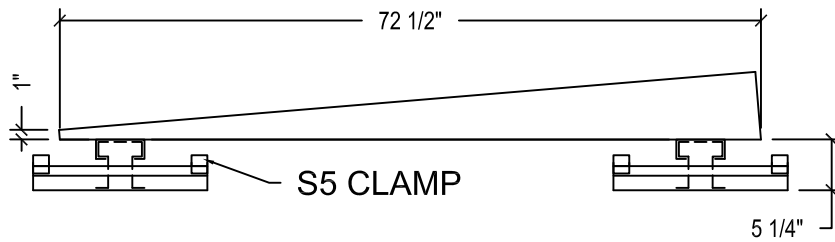
**INSTALLATION INSTRUCTIONS**

STEP-1 : APPLY 3/4" MASTIC UNDER RIB CAP SIDES.

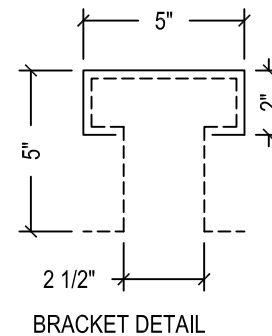
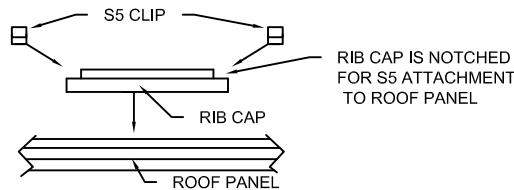
STEP-2 : (Only do this step if panels are off module)  
ALIGN RIB CAPS OVER ROOF PANEL AND SCREW DOWN RIB BRACKETS TO FRAME CHANNEL WITH PROVIDED 3/8" TEK SCREWS .

STEP-3 : ADJUST PLAT-FORM CHANNELS TO DESIRED LOCATION AND SCREW DOWN TO FRAME CHANNEL WITH PROVIDED 3/8" TEK SCREWS .

STEP-4 : SECURE RIB CAPS TO ROOF PANEL WITH PROVIDED S5 CLAMPS.



SLOPE TO BE DETERMINED



PROJECT NAME:

CITY, STATE:

CUSTOMER:

JOB NUMBER

**ROOFTOP PLATFORM SYSTEM**

**STANDARD FEATURES**

1. 14 GALVALUME CONSTRUCTION
- 2.
3. .
- 4.
- 5.

ADDED OPTIONS:

- 1.

QTY: 1

TAG:

DESCRIPTION