



DESIGN COMPONENTS, INC. METAL BUILDING ROOF CURB

115 Walter Way - Fayetteville, GA 30214
PH: (800) 868-9910 email: sales@designcomponents.com
FX: (770) 460-7872 website: www.designcomponents.com

DOUBLE CURB

(800) 868-9910

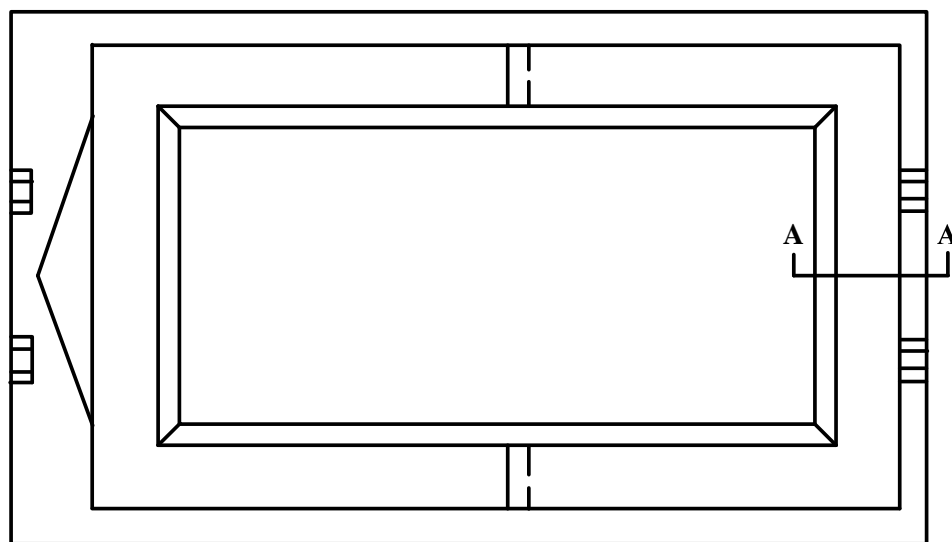
Floating Curb Arrangement Inner Structural Curb Outer Floating Curb Flashing Collar

PROJECT NAME: _____

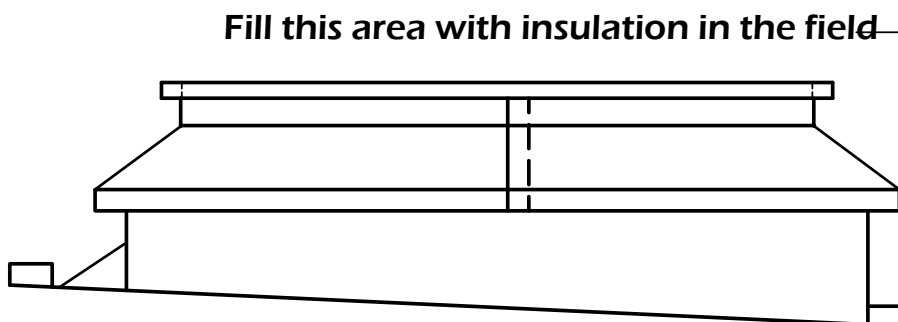
CITY, STATE: _____

CUSTOMER: _____

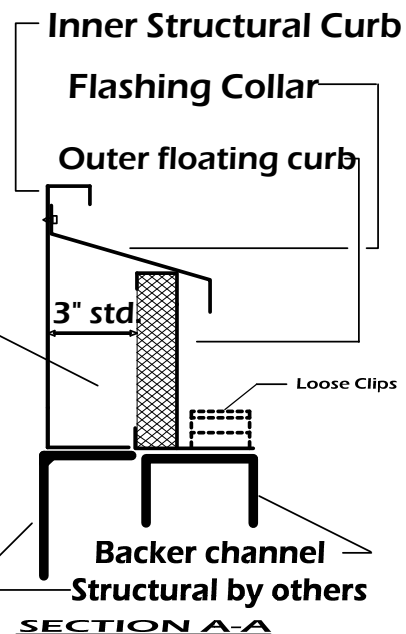
JOB NUMBER: _____



PLAN VIEW



ELEVATION



SECTION A-A

1. Fasten or weld inner structural curb to structural steel as required.
2. Install the outer floating curb per the separate list of instructions. Maintain a 3" space between inner and outer curb. Fill 3" space with insulation before installing flash collar.
3. Install the flashing collar as shown. Use tube caulk for sealant at the splice connection and at connection to inner curb. Fasten at 12" o.c. to inner curb and 3" o.c. at splice with tek screws.