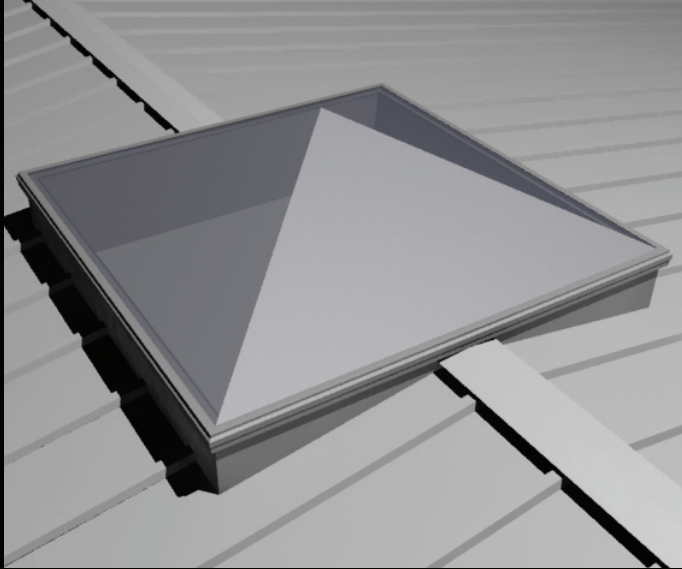
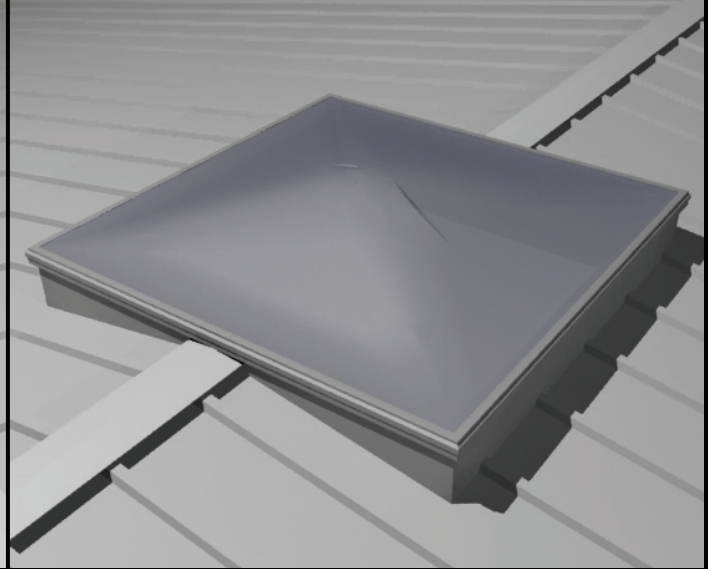


SKYLIGHTS



PYRAMID SKYLIGHT



DOMED SKYLIGHT

SKYLIGHT SPECIFICATIONS

- **CONSTRUCTION:**

- Factory assembled units consisting of single or double Acrylic Domes or Pyramids as specified.
- Extruded aluminum frame with integral condensate gutter, exterior drip and sufficient drainage slots to carry all moisture to the outside.

- **DESIGN:**

- Uniform design load capability of composite dome and frame meets or exceeds 40 PSF snow load.
- Specify higher loads when applicable.

- **GLAZING MATERIALS:**

- Standard Acrylic plastic glazing material provides a lightweight, impact resistant and economical alternative to glass.
- Clear, White, Bronze and Gray tint available.

- **OPTIONS:**

- Polycarbonate glazing material
- Thermalized frame
- Curb mount frame or Self-Flashing integral curb
- Skylights can be clustered together

- **FINISH:**

- Standard Mill Finish frame.
- Anodized, Baked Enamel or Kynar Finish as specified.

- **WARRANTY:**

Skylight products are warranted to the original purchaser for a period of five years from date of shipment against defects in material or workmanship, provided that such products are installed in accordance with the manufacturer's installation instructions.

- **CONDENSATION:**

- Under certain conditions of high humidity and large temperature differentials, condensation may occur on the metal and plastic surfaces.
- Double glazing will usually reduce the occurrence of condensation but will not totally eliminate it.
- Under certain temperature conditions, condensation may form between the layers of the plastic glazing, but will normally dissipate as the air space is heated by the sun. Sealed double domes are more resistant to the formation of condensation in addition to preventing the accumulation of dust and foreign matter.



CALL FOR CURRENT PRICING

DESIGN COMPONENTS, INC. Serving The Metal Building Industry Since 1978

115 Walter Way

Fayetteville, GA 30214

email: sales@designcomponents.com

PH (800) 868-9910

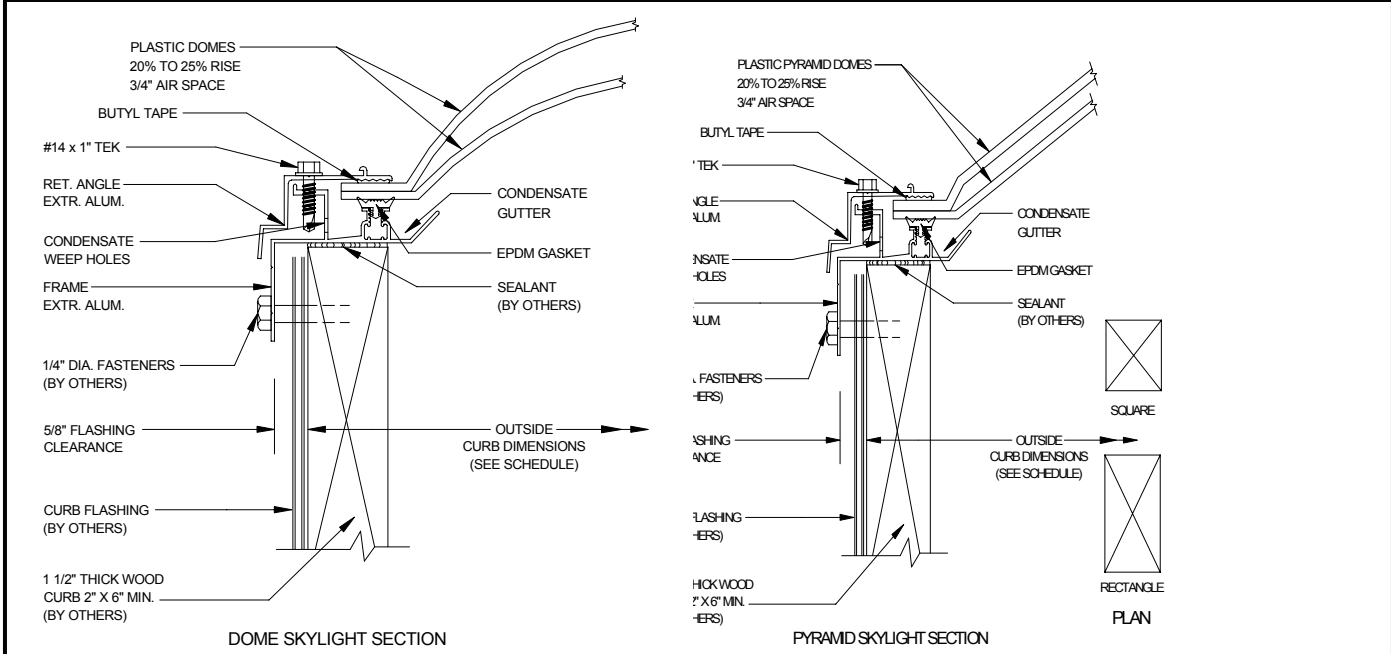
FX (770) 460-7872

website: www.designcomponents.com

SKYLIGHT TECHNICAL DATA

LIGHTING TABLE - STANDARD COLORS

Acrylic	Visible Light Transmission	Solar Transmission
Clear	92%	85%
2447 White	56%	56%
2412 Bronze	27%	35%
2064 Gray	27%	44%



STANDARD SIZE SELECTION CHART*

MODEL	INSIDE CURB DIMENSIONS	OUTSIDE CURB DIMENSIONS
2828	22-1/4" x 22-1/4"	25-1/4" x 25-1/4"
3636	30-1/4" x 30-1/4"	33-1/4" x 33-1/4"
5252	46-1/4" x 46-1/4"	49-1/4" x 49-1/4"
6060	55" x 55"	58" x 58"
7676	69-1/2" x 69-1/2"	72-1/2" x 72-1/2"
9898	92-1/2" x 92-1/2"	95-1/2" x 95-1/2"

RECTANGULAR		
MODEL	INSIDE CURB DIMENSIONS	OUTSIDE CURB DIMENSIONS
2852	22-1/4" x 46-1/4"	25-1/4" x 49-1/4"
3652	30-1/4" x 46-1/4"	33-1/4" x 49-1/4"
5276	46-1/4" x 69-1/2"	49-1/4" x 72-1/2"
5199	48" x 96"	51" x 99"
5296	46-1/4" x 89-1/2"	49-1/4" x 92-1/2"
6496	57-1/2" x 89-1/2"	60-1/2" x 92-1/2"

***OTHER SIZES AVAILABLE**



DESIGN COMPONENTS, INC. Serving The Metal Building Industry Since 1978

115 Walter Way	Fayetteville, GA 30214	email: sales@designcomponents.com
PH (800) 868-9910	FX (770) 460-7872	website: www.designcomponents.com