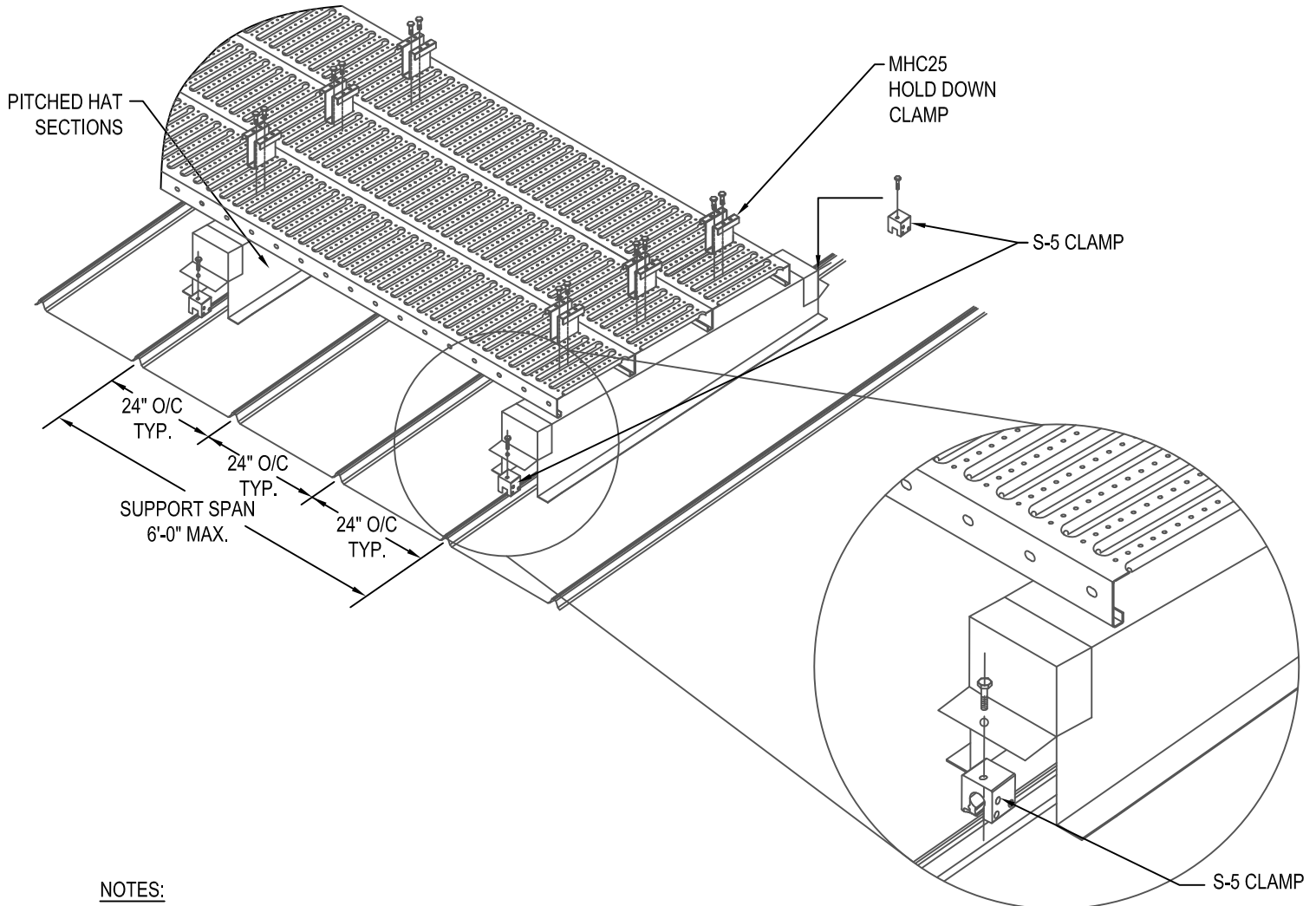


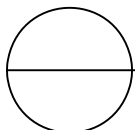


DESIGN COMPONENTS INC / METALWALK
 115 WALTER WAY
 FAYETTEVILLE, GA 30214
 PHONE: (800) 868-9910
 FAX: (770) 460-7872
 www.rooftopwalkway.com



NOTES:

1. ATTACH (1) S-5!® TO EACH END OF PITCHED HAT CHANNEL.
2. INSTALLATION TO BE COMPLETED IN ACCORDANCE WITH MANUFACTURER'S SPECIFICATIONS.
3. DO NOT SCALE DRAWING.
4. THIS DRAWING IS INTENDED FOR USE BY ARCHITECTS, ENGINEERS, CONTRACTORS, CONSULTANTS AND DESIGN PROFESSIONALS FOR PLANNING PURPOSES ONLY. THIS DRAWING MAY NOT BE USED FOR CONSTRUCTION.
5. ALL INFORMATION CONTAINED HEREIN WAS CURRENT AT THE TIME OF DEVELOPMENT BUT MUST BE REVIEWED AND APPROVED BY THE PRODUCT MANUFACTURER TO BE CONSIDERED ACCURATE.
6. CONTRACTOR'S NOTE: FOR PRODUCT AND COMPANY INFORMATION VISIT www.CADdetails.com/info AND ENTER REFERENCE NUMBER 5018-034.



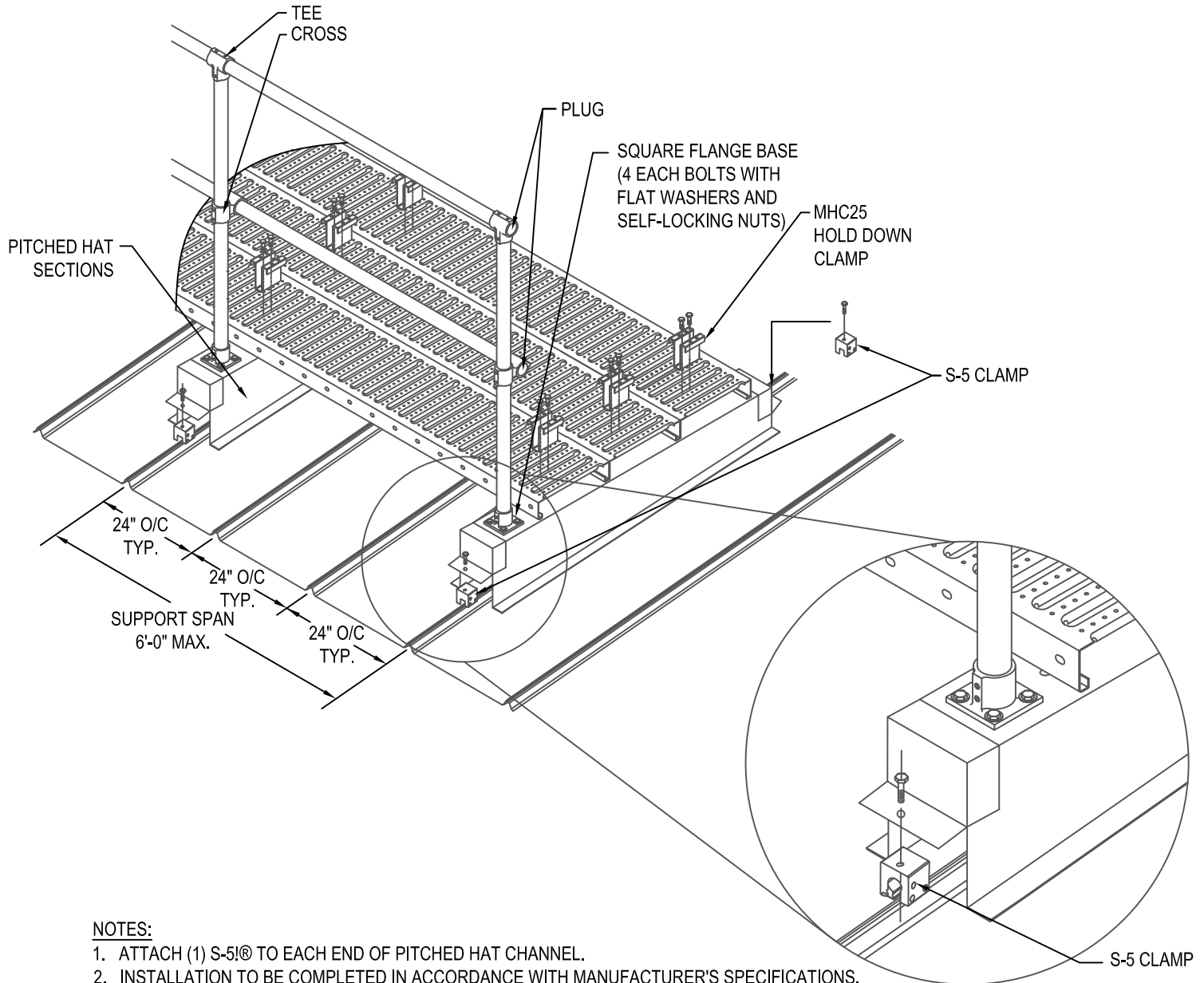
LEVEL RUNS - NO HANDRAIL - PAGE 22

LEVEL PITCH SSR - NO RAIL



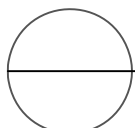


DESIGN COMPONENTS INC / METALWALK
 115 WALTER WAY
 FAYETTE, GA 30214
 PHONE: (800) 868-9910
 FAX: (770) 460-7872
 www.rooftopwalkway.com



NOTES:

1. ATTACH (1) S-5!® TO EACH END OF PITCHED HAT CHANNEL.
2. INSTALLATION TO BE COMPLETED IN ACCORDANCE WITH MANUFACTURER'S SPECIFICATIONS.
3. DO NOT SCALE DRAWING.
4. THIS DRAWING IS INTENDED FOR USE BY ARCHITECTS, ENGINEERS, CONTRACTORS, CONSULTANTS AND DESIGN PROFESSIONALS FOR PLANNING PURPOSES ONLY. THIS DRAWING MAY NOT BE USED FOR CONSTRUCTION.
5. ALL INFORMATION CONTAINED HEREIN WAS CURRENT AT THE TIME OF DEVELOPMENT BUT MUST BE REVIEWED AND APPROVED BY THE PRODUCT MANUFACTURER TO BE CONSIDERED ACCURATE.
6. CONTRACTOR'S NOTE: FOR PRODUCT AND COMPANY INFORMATION VISIT www.CADdetails.com/info AND ENTER REFERENCE NUMBER 5018-009.



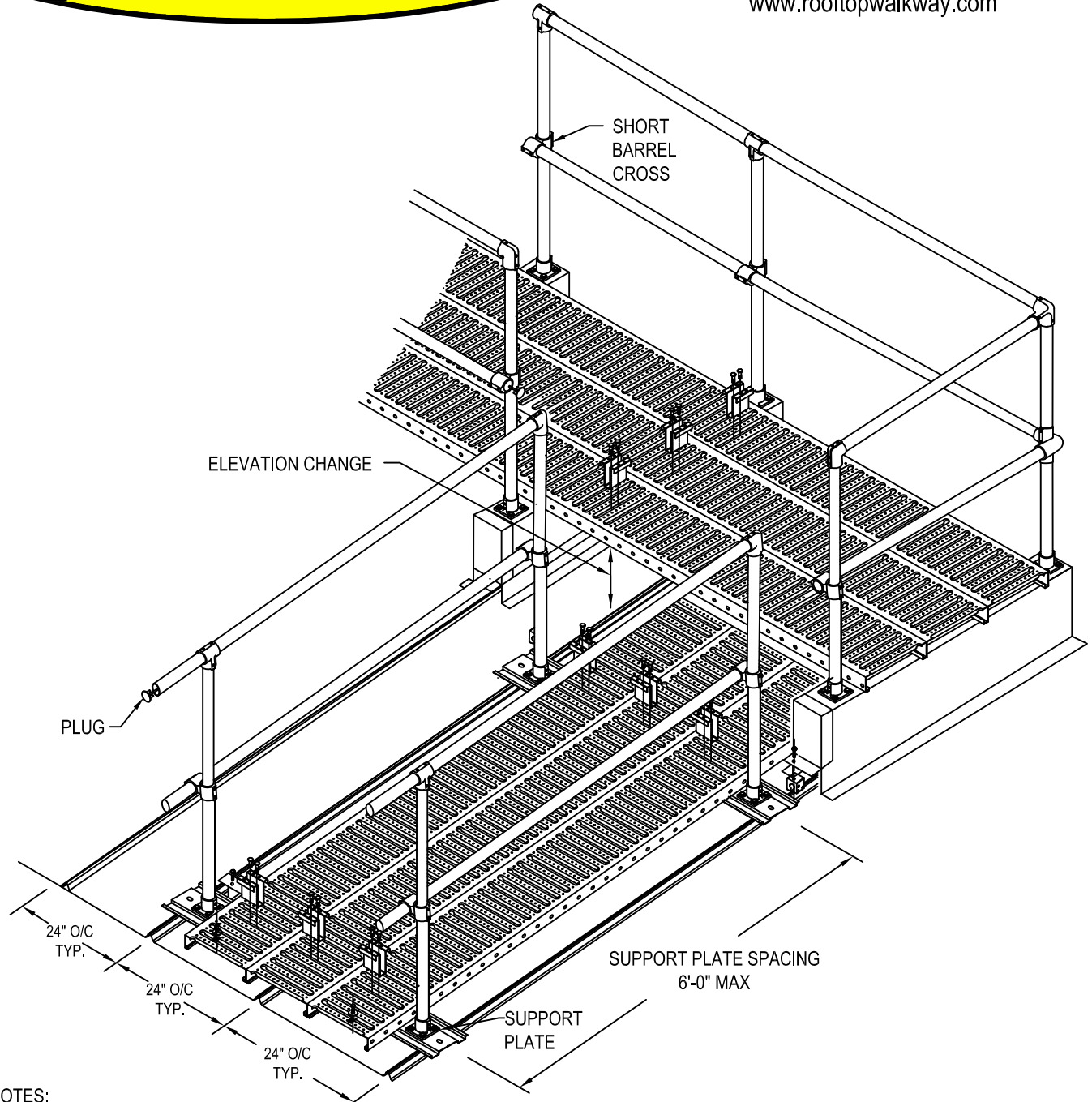
LEVEL RUNS - HANDRAIL 1 SIDE - PAGE 23

LEVEL PITCH CORRECTED - 36" WIDE METALWALK® 1 SIDED HANDRAIL, PERPENDICULAR TO PANEL



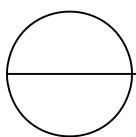


DESIGN COMPONENTS INC / METALWALK
 115 WALTER WAY
 FAYETTEVILLE, GA 30214
 PHONE: (800) 868-9910
 FAX: (770) 460-7872
www.rooftopwalkway.com



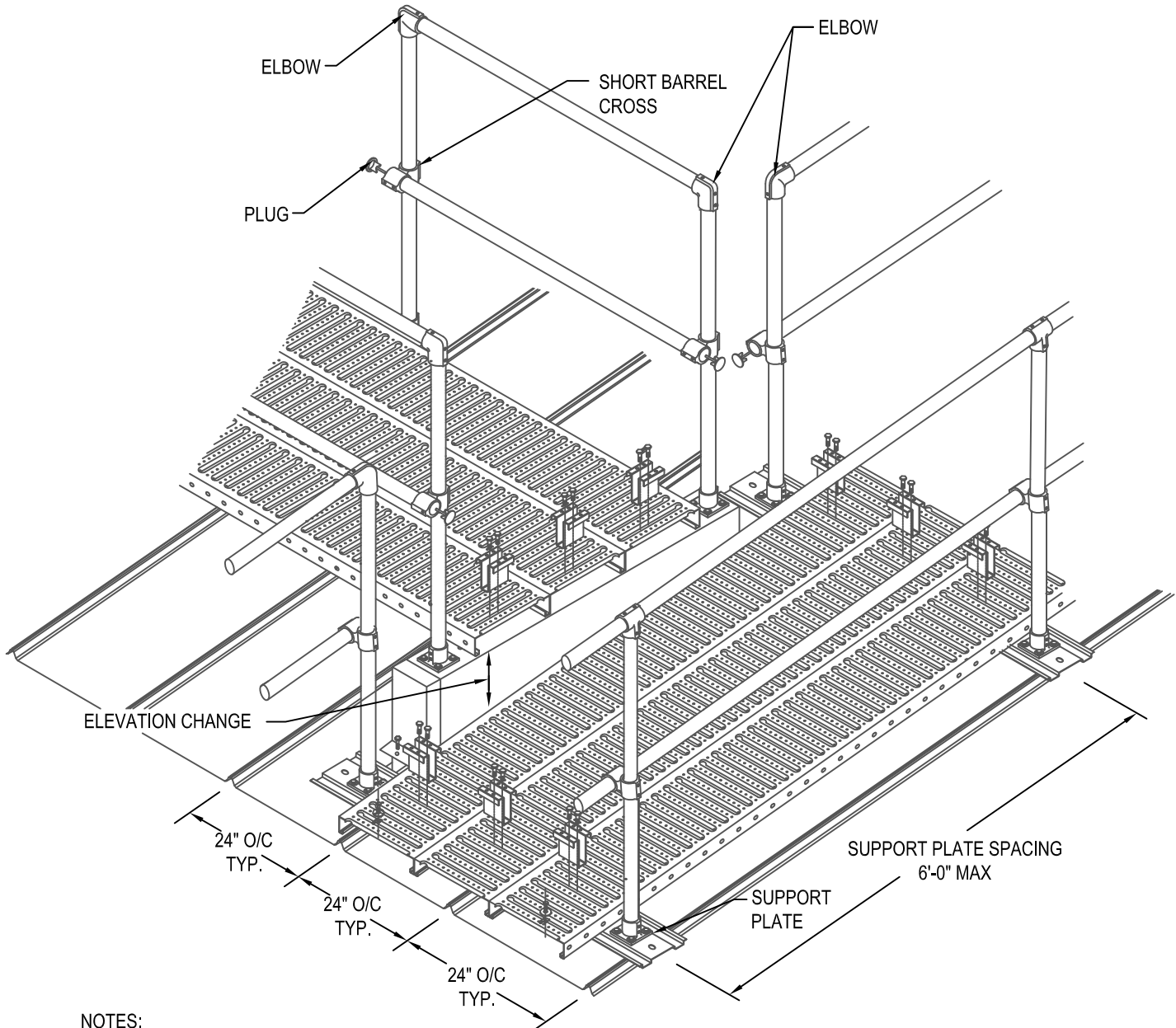
NOTES:

1. INSTALLATION TO BE COMPLETED IN ACCORDANCE WITH MANUFACTURER'S SPECIFICATIONS.
2. DO NOT SCALE DRAWING.
3. THIS DRAWING IS INTENDED FOR USE BY ARCHITECTS, ENGINEERS, CONTRACTORS, CONSULTANTS AND DESIGN PROFESSIONALS FOR PLANNING PURPOSES ONLY. THIS DRAWING MAY NOT BE USED FOR CONSTRUCTION.
4. ALL INFORMATION CONTAINED HEREIN WAS CURRENT AT THE TIME OF DEVELOPMENT BUT MUST BE REVIEWED AND APPROVED BY THE PRODUCT MANUFACTURER TO BE CONSIDERED ACCURATE.
5. CONTRACTOR'S NOTE: FOR PRODUCT AND COMPANY INFORMATION VISIT www.CADdetails.com/info AND ENTER REFERENCE NUMBER 5018-012.



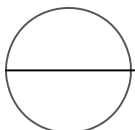


DESIGN COMPONENTS INC / METALWALK
 115 WALTER WAY
 FAYETTEVILLE, GA 30214
 PHONE: (800) 868-9910
 FAX: (770) 460-7872
 www.rooftopwalkway.com



NOTES:

1. INSTALLATION TO BE COMPLETED IN ACCORDANCE WITH MANUFACTURER'S SPECIFICATIONS.
2. DO NOT SCALE DRAWING.
3. THIS DRAWING IS INTENDED FOR USE BY ARCHITECTS, ENGINEERS, CONTRACTORS, CONSULTANTS AND DESIGN PROFESSIONALS FOR PLANNING PURPOSES ONLY. THIS DRAWING MAY NOT BE USED FOR CONSTRUCTION.
4. ALL INFORMATION CONTAINED HEREIN WAS CURRENT AT THE TIME OF DEVELOPMENT BUT MUST BE REVIEWED AND APPROVED BY THE PRODUCT MANUFACTURER TO BE CONSIDERED ACCURATE.
5. CONTRACTOR'S NOTE: FOR PRODUCT AND COMPANY INFORMATION VISIT www.CADdetails.com/info AND ENTER REFERENCE NUMBER 5018-011.

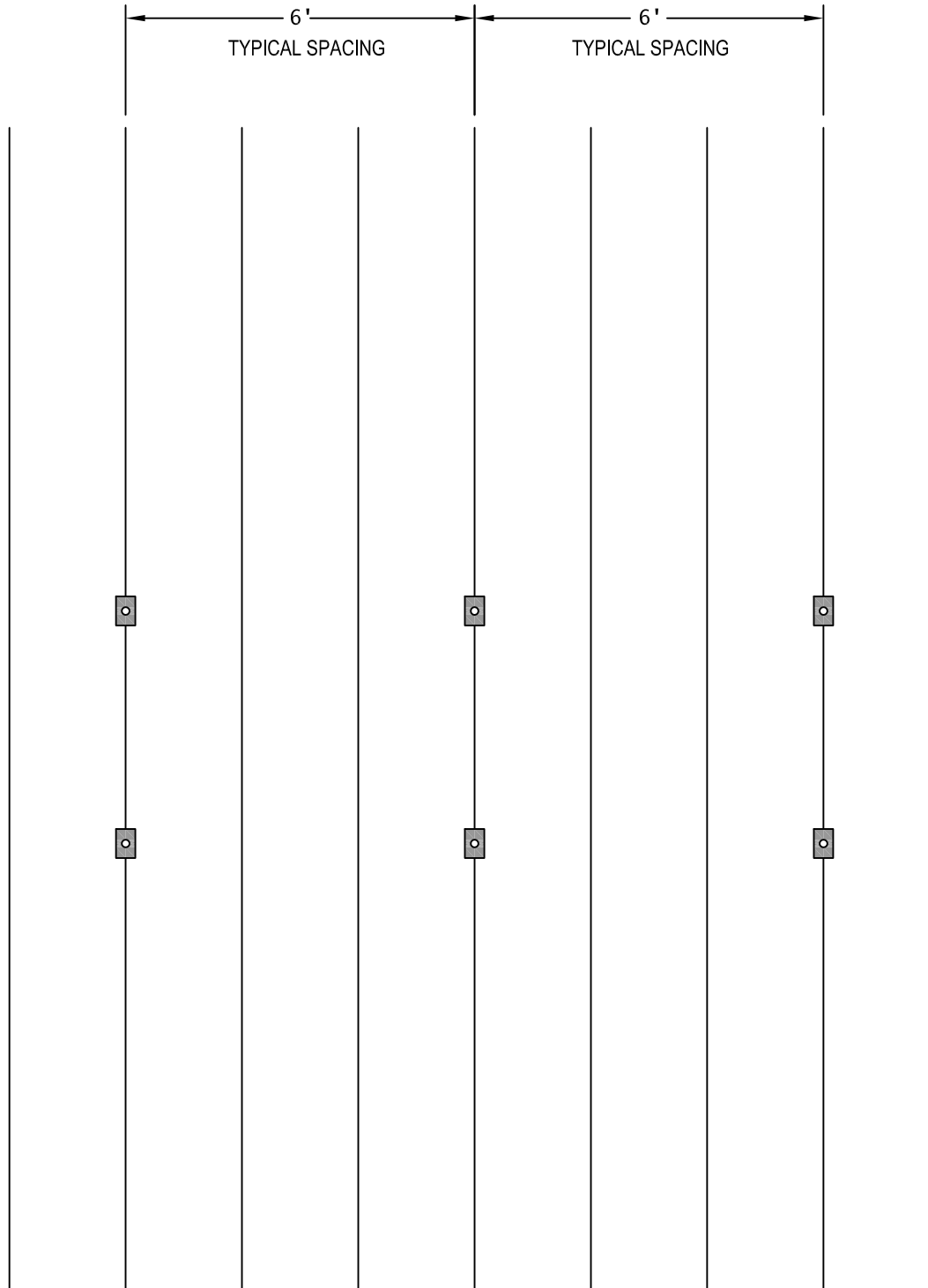


LEVEL RUNS - PARALLEL PAST PERP. - PAGE 25

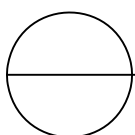




DESIGN COMPONENTS INC / METALWALK
 115 WALTER WAY
 FAYETTEVILLE, GA 30214
 PHONE: (800) 868-9910
 FAX: (770) 460-7872
 www.rooftopwalkway.com

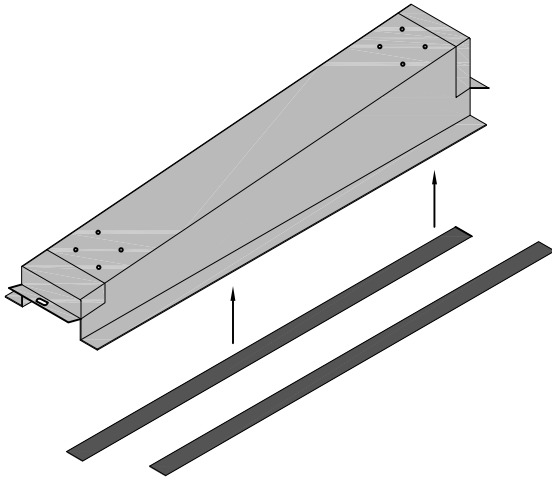


STEP 1 - USING THE ROOF LAYOUT DRAWING, DETERMINE THE LOCATIONS OF THE PITCHED HAT CHANNELS. INSTALL 2 EA. S-5® CLAMPS BASED ON DIMENSION FROM FRONT AND REAR SLOTTED HOLES. TIGHTEN TO TORQUE SPECS LOCATED IN BOX.

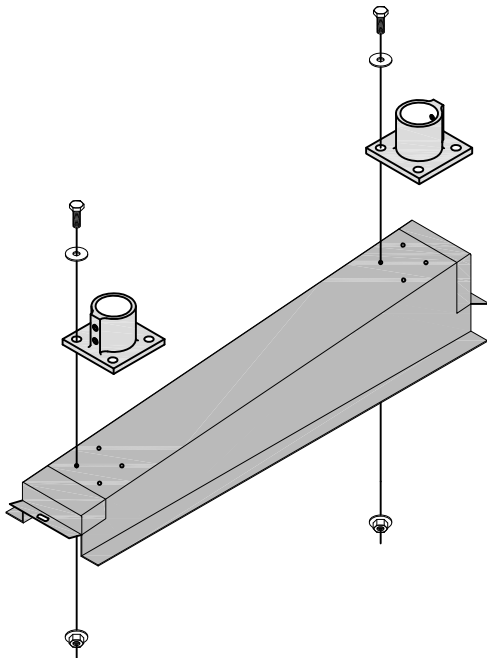




DESIGN COMPONENTS INC / METALWALK
115 WALTER WAY
FAYETTEVILLE, GA 30214
PHONE: (800) 868-9910
FAX: (770) 460-7872
www.rooftopwalkway.com

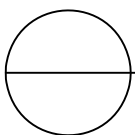


STEP 2 - INSTALL NEOPRENE GASKET TO BOTTOM OF BOTH LEGS OF THE PITCHED HAT CHANNEL.



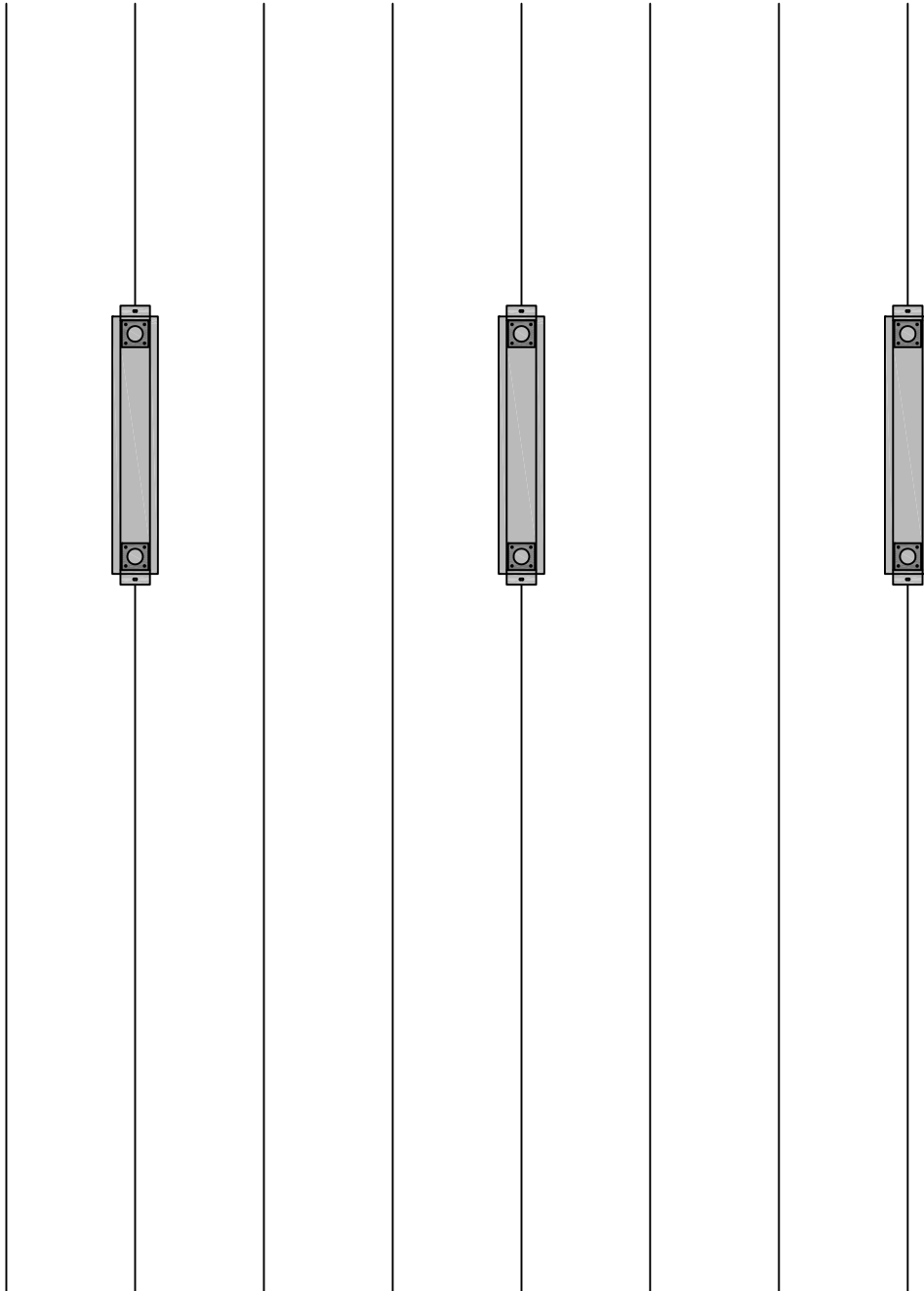
STEP 3 - DETERMINE WHICH SIDE HANDRAIL IS TO BE INSTALLED ON. INSTALL RAIL BASE TO PITCHED HAT CHANNEL. USE 4 EA. 5/16" X1" BOLT, 4 EA. 7/8" WASHERS & 4 EA. LOCK NUTS PER RAIL BASE.

NOTE: INSTALL ALL BASES TO PITCHED HATS BEFORE INSTALLING PITCHED HATS TO THE ROOF.

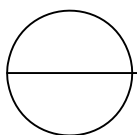
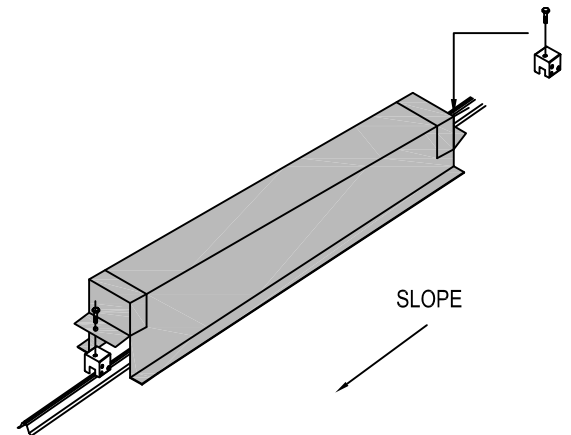




DESIGN COMPONENTS INC / METALWALK
115 WALTER WAY
FAYETTEVILLE, GA 30214
PHONE: (800) 868-9910
FAX: (770) 460-7872
www.rooftopwalkway.com



STEP 4 - INSTALL PITCHED HATS TO SSR
PANEL USING 2 EA. S-5® CLAMPS AND M8
BOLTS SUPPLIED WITH CLAMP. ATTACH S-5®
CLAMP TO SSR PANEL THRU SLOTTED HOLE
AT EACH END OF PITCHED HAT CHANNEL.
SEE IMAGE BELOW.

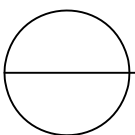
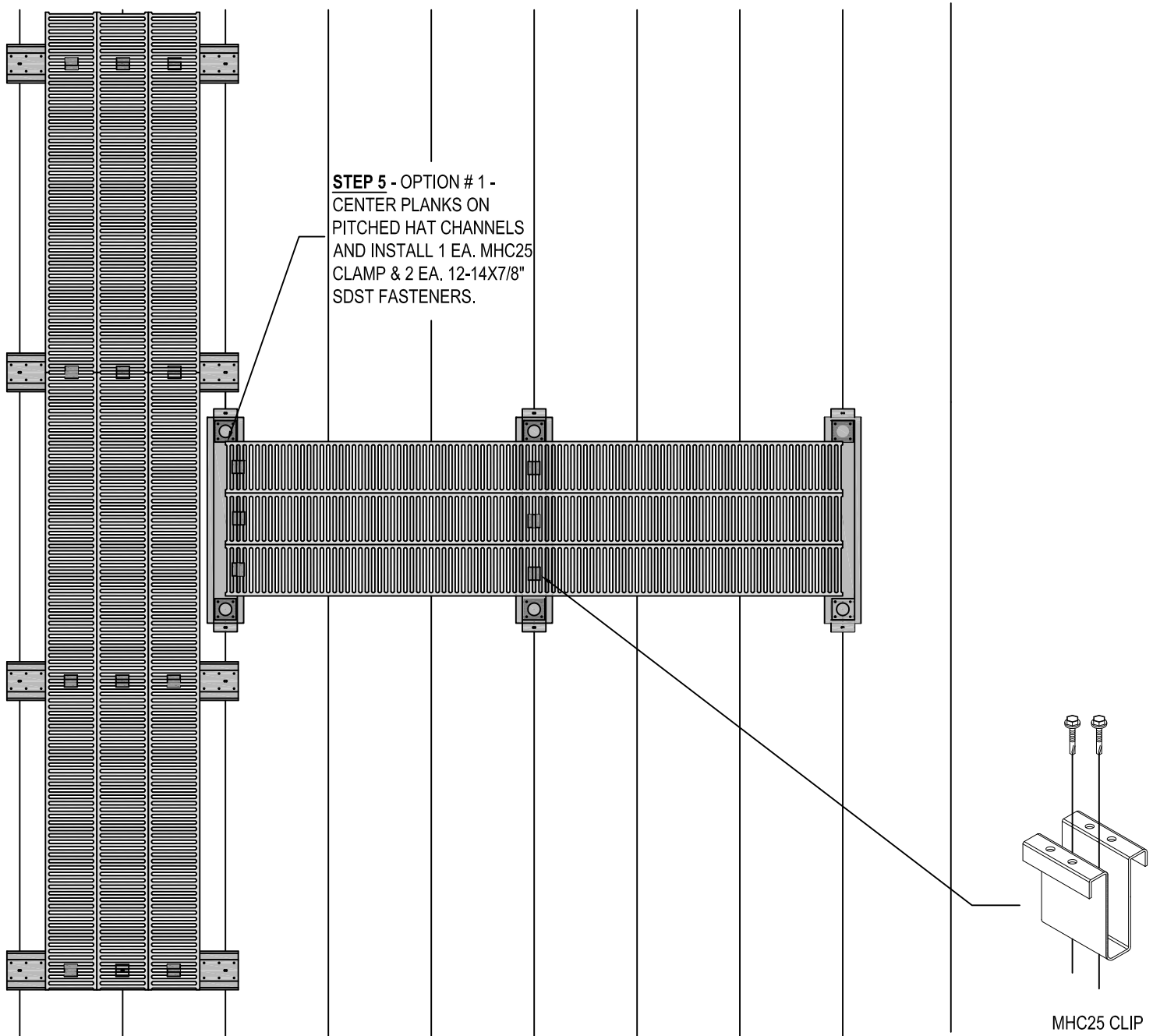


LEVEL RUNS - PITCHED HAT ATTACHMENT - PAGE 28



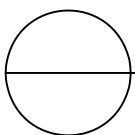
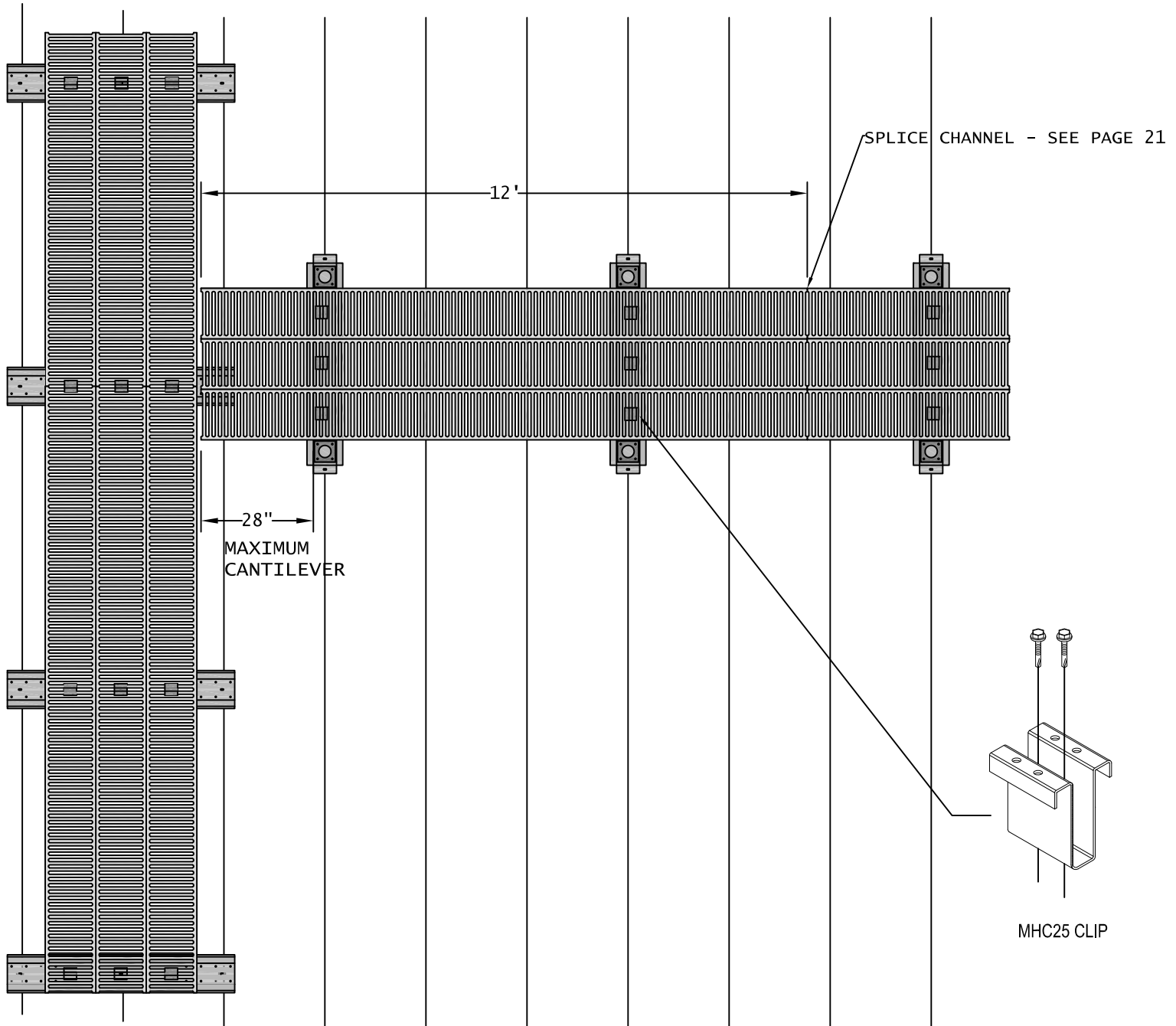


DESIGN COMPONENTS INC / METALWALK
115 WALTER WAY
FAYETTEVILLE, GA 30214
PHONE: (800) 868-9910
FAX: (770) 460-7872
www.rooftopwalkway.com





DESIGN COMPONENTS INC / METALWALK
115 WALTER WAY
FAYETTEVILLE, GA 30214
PHONE: (800) 868-9910
FAX: (770) 460-7872
www.rooftopwalkway.com

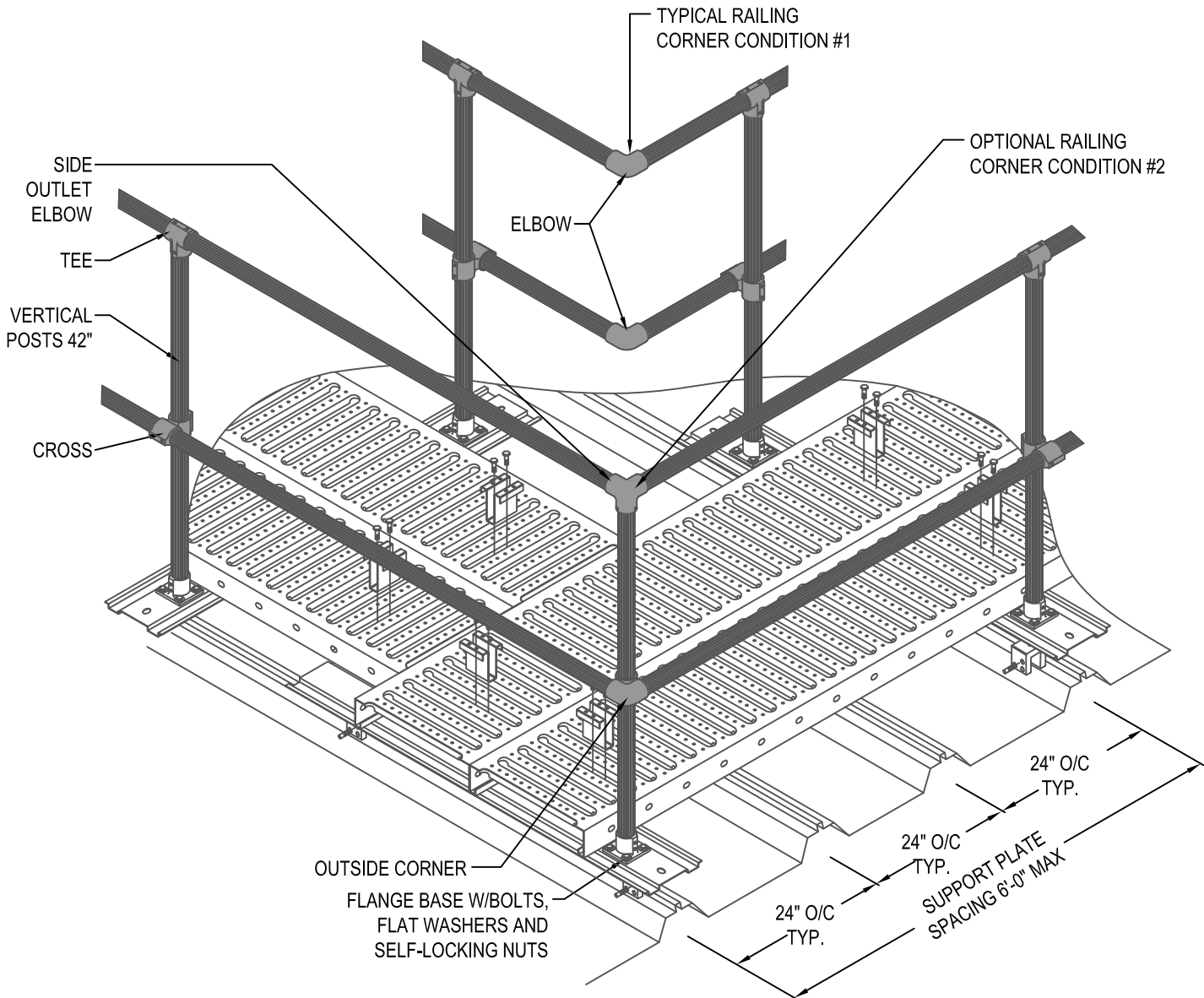


LEVEL RUNS - STARTING POINT OPTION #2 - PAGE 30



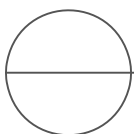


DESIGN COMPONENTS INC / METALWALK
 115 WALTER WAY
 FAYETTEVILLE, GA 30214
 PHONE: (800) 868-9910
 FAX: (770) 460-7872
 www.rooftopwalkway.com



NOTES:

1. INSTALLATION TO BE COMPLETED IN ACCORDANCE WITH MANUFACTURER'S SPECIFICATIONS.
2. DO NOT SCALE DRAWING.
3. THIS DRAWING IS INTENDED FOR USE BY ARCHITECTS, ENGINEERS, CONTRACTORS, CONSULTANTS AND DESIGN PROFESSIONALS FOR PLANNING PURPOSES ONLY. THIS DRAWING MAY NOT BE USED FOR CONSTRUCTION.
4. ALL INFORMATION CONTAINED HEREIN WAS CURRENT AT THE TIME OF DEVELOPMENT BUT MUST BE REVIEWED AND APPROVED BY THE PRODUCT MANUFACTURER TO BE CONSIDERED ACCURATE.
5. CONTRACTOR'S NOTE: FOR PRODUCT AND COMPANY INFORMATION VISIT www.CADdetails.com/info AND ENTER REFERENCE NUMBER 5018-035.



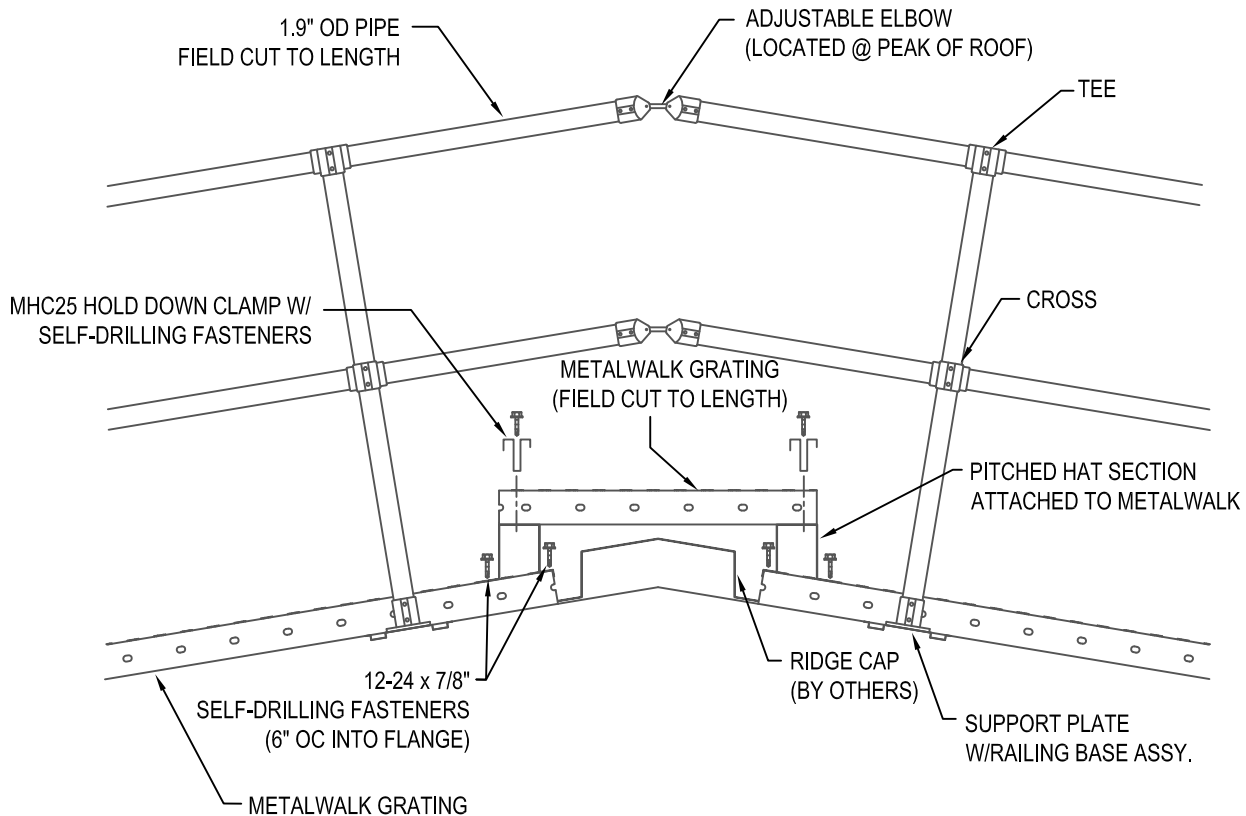
ROOFTOP METALWALK SYSTEM - PAGE 31

METALWALK®, RAILING CORNER CONDITIONS OVERVIEW





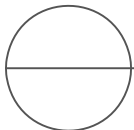
DESIGN COMPONENTS INC / METALWALK
 115 WALTER WAY
 FAYETTEVILLE, GA 30214
 PHONE: (800) 868-9910
 FAX: (770) 460-7872
 www.rooftopwalkway.com



PARALLEL TO PANEL VIEW

NOTES:

1. SPECIAL APPLICATION WITH TRANSITION OVER RIDGE CAP.
2. RIDGE CAP WIDTH & HEIGHT VARIES PER BUILDING SPECIFICATIONS.
3. REFER TO STANDARD INSTALLATION INSTRUCTIONS FOR ATTACHMENT OF METALWALK TO ROOF AND ASSEMBLY OF HANDRAIL COMPONENTS.
4. INSTALLATION TO BE COMPLETED IN ACCORDANCE WITH MANUFACTURER'S SPECIFICATIONS.
5. DO NOT SCALE DRAWING.
6. THIS DRAWING IS INTENDED FOR USE BY ARCHITECTS, ENGINEERS, CONTRACTORS, CONSULTANTS AND DESIGN PROFESSIONALS FOR PLANNING PURPOSES ONLY. THIS DRAWING MAY NOT BE USED FOR CONSTRUCTION.
7. ALL INFORMATION CONTAINED HEREIN WAS CURRENT AT THE TIME OF DEVELOPMENT BUT MUST BE REVIEWED AND APPROVED BY THE PRODUCT MANUFACTURER TO BE CONSIDERED ACCURATE.
8. CONTRACTOR'S NOTE: FOR PRODUCT AND COMPANY INFORMATION VISIT www.CADdetails.com/info AND ENTER REFERENCE NUMBER 5018-007.



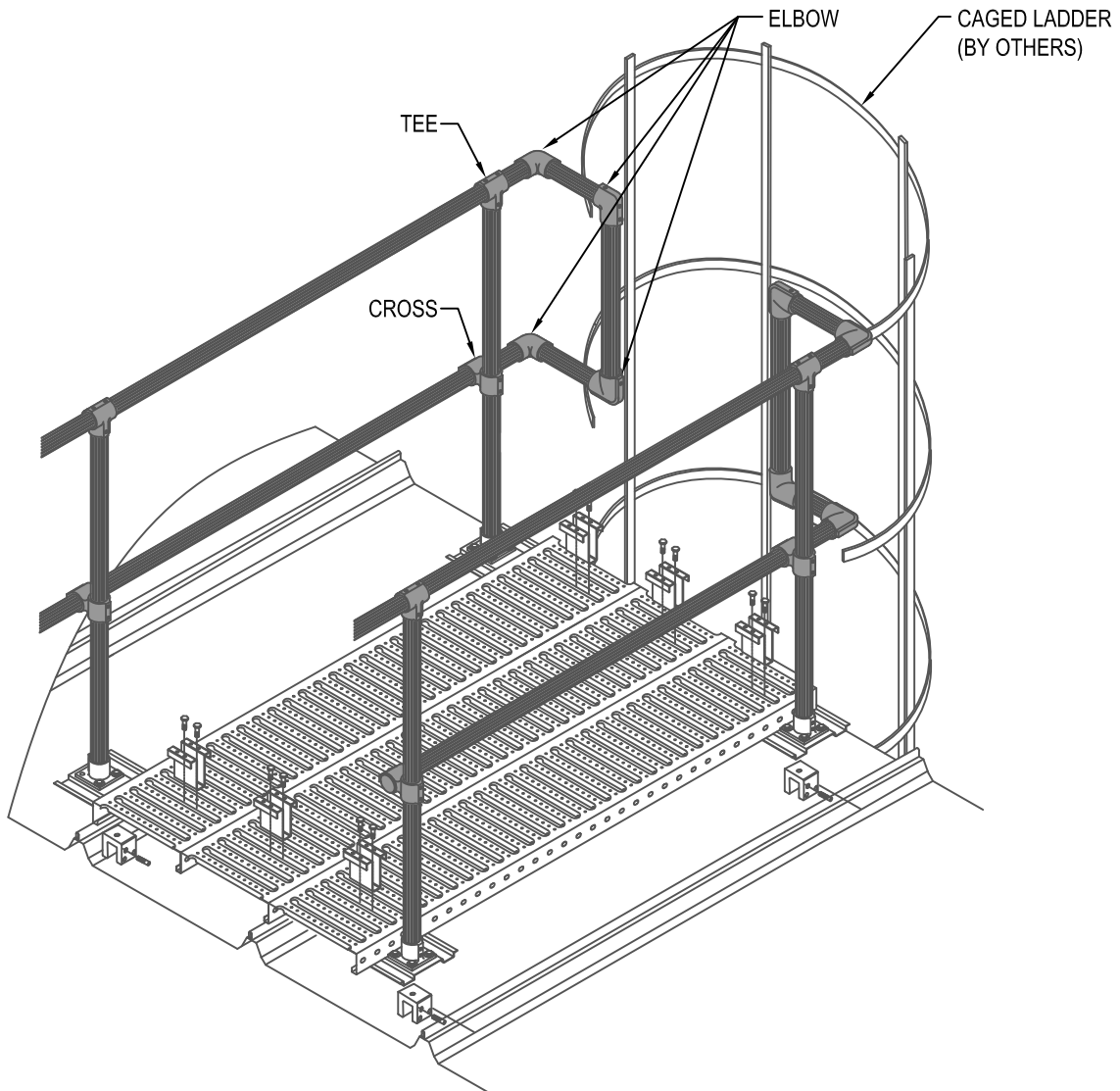
ROOFTOP METALWALK SYSTEM - PAGE 32

RIDGE CROSSOVER, WITH SAFETY HANDRAIL, SPECIAL CONDITION



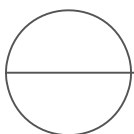


DESIGN COMPONENTS INC / METALWALK
115 WALTER WAY
FAYETTEVILLE, GA 30214
PHONE: (800) 868-9910
FAX: (770) 460-7872
www.rooftopwalkway.com



NOTES:

1. INSTALLATION TO BE COMPLETED IN ACCORDANCE WITH MANUFACTURER'S SPECIFICATIONS.
2. DO NOT SCALE DRAWING.
3. THIS DRAWING IS INTENDED FOR USE BY ARCHITECTS, ENGINEERS, CONTRACTORS, CONSULTANTS AND DESIGN PROFESSIONALS FOR PLANNING PURPOSES ONLY. THIS DRAWING MAY NOT BE USED FOR CONSTRUCTION.
4. ALL INFORMATION CONTAINED HEREIN WAS CURRENT AT THE TIME OF DEVELOPMENT BUT MUST BE REVIEWED AND APPROVED BY THE PRODUCT MANUFACTURER TO BE CONSIDERED ACCURATE.
5. CONTRACTOR'S NOTE: FOR PRODUCT AND COMPANY INFORMATION VISIT www.CADdetails.com/info AND ENTER REFERENCE NUMBER CAGED LADDER CONDITION - PAGE 33.



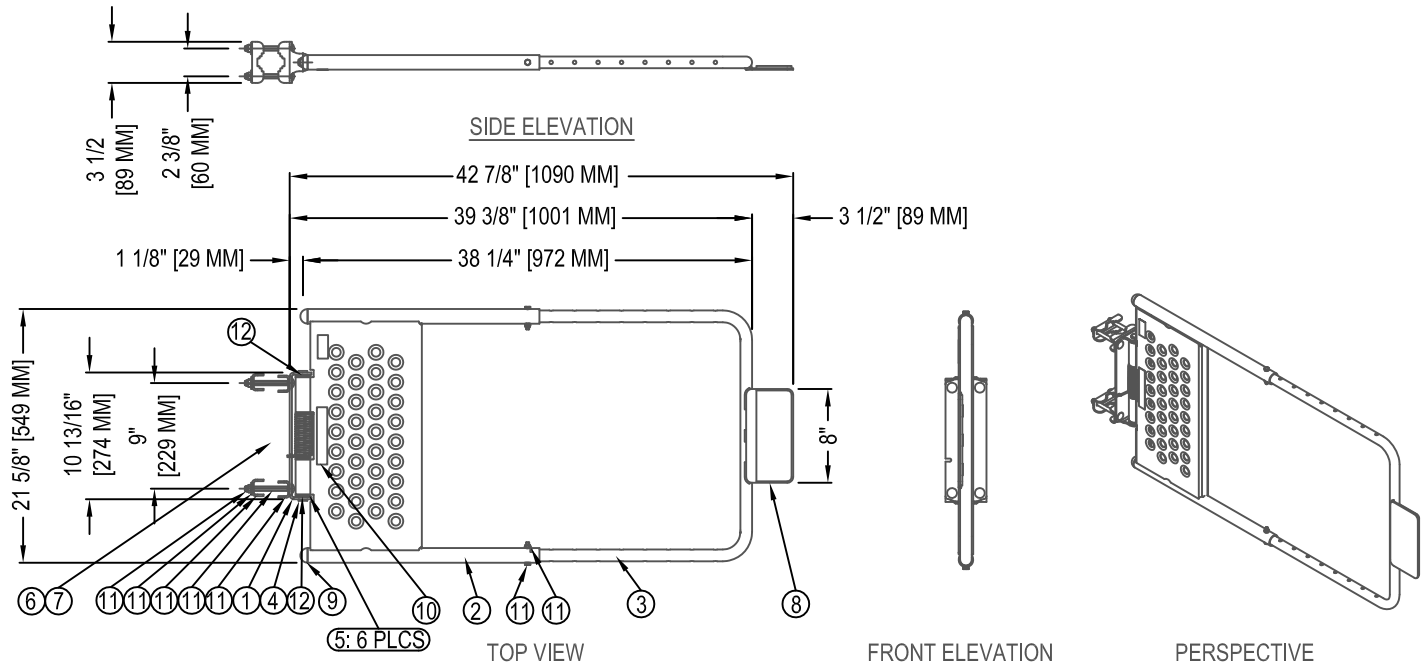
ROOFTOP METALWALK SYSTEM - PAGE 33

36" WIDE METALWALK®, 2 SIDED HANDRAIL, CAGED LADDER TRANSITION





DESIGN COMPONENTS INC / METALWALK
115 WALTER WAY
FAYETTEVILLE, GA 30214
PHONE: (800) 868-9910
FAX: (770) 460-7872
www.rooftopwalkway.com



PARTS LIST

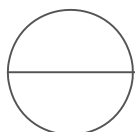
ITEM	PART #	DWG	DESCRIPTION	ITEM QT
1	D0900066-02	D0900066	SWING GATE MNTING PLATE FORMED	1
2	D0900067	D0900067	SWING GATE PANEL 2440 WELDMNT	1
3	D0900086	D0900086	SWING GATE PANEL TUBE 2440 WELDMNT	1
4	D0900069	D0900069	PIVOT TUBE 3/4 SST PANEL GATE	1
5	D0900077	D0900077	SAFETY GATE PIVOT BUSHING BLACK NYLON	6
6	A-301-0389	B0900027	TORSION SPRING (SST) FOR GATE	1
7	A-301-0365	A0900030	ROUND CAP - DIP MOLDED END-CAP BLACK	1
8	D0900064	D0900064	FOAM PAD FOR PLATE	1
9	A-301-0682		BALL HEAD PLUG 1.250" BLACK REF C-40-U-21 RODON	2
10	D0080091	D0080091	LABEL PLACEMENT FOR SWING GATES	1
11	SU0072	SU0072	SWING GATE MOUNTING HARDWARE KIT	1
12	D0900095	D0900095	WASHER 1.25 OD, 0.766 ID, 0.016 THICK PTFE	2
13	I0900005	I0900005	SWING GATE INSTRUCTIONS	1
14	A-303-0412	A-303-0412	CARTON PAD - 24.5 X 21.5 42ECT B/C FLUTE KR	1
15	A-303-0413	A-303-0413	CARTON 21.75 X 3.5 X 24.75 FOL 42ECT B/C FLUTE KR GL	1

NOTES:

- ALL POWDER COATED MODELS, ASSEMBLE HARDWARE ITEMS AFTER CURING.
- INSTALLATION TO BE COMPLETED IN ACCORDANCE WITH MANUFACTURER'S SPECIFICATIONS.
- DO NOT SCALE DRAWING.
- THIS DRAWING IS INTENDED FOR USE BY ARCHITECTS, ENGINEERS, CONTRACTORS, CONSULTANTS AND DESIGN PROFESSIONALS FOR PLANNING PURPOSES ONLY. THIS DRAWING MAY NOT BE USED FOR CONSTRUCTION.
- ALL INFORMATION CONTAINED HEREIN WAS CURRENT AT THE TIME OF DEVELOPMENT BUT MUST BE REVIEWED AND APPROVED BY THE PRODUCT MANUFACTURER TO BE CONSIDERED ACCURATE.
- CONTRACTOR'S NOTE: FOR PRODUCT AND COMPANY INFORMATION VISIT www.CADdetails.com/info AND ENTER REFERENCE NUMBER 5018-043.

FEATURES:

- 24" - 40" ADJUSTABLE SELF CLOSING GATE
- STANDARD FINISH "SAFETY YELLOW"
- OTHER FINISHES AVAILABLE UPON REQUEST.



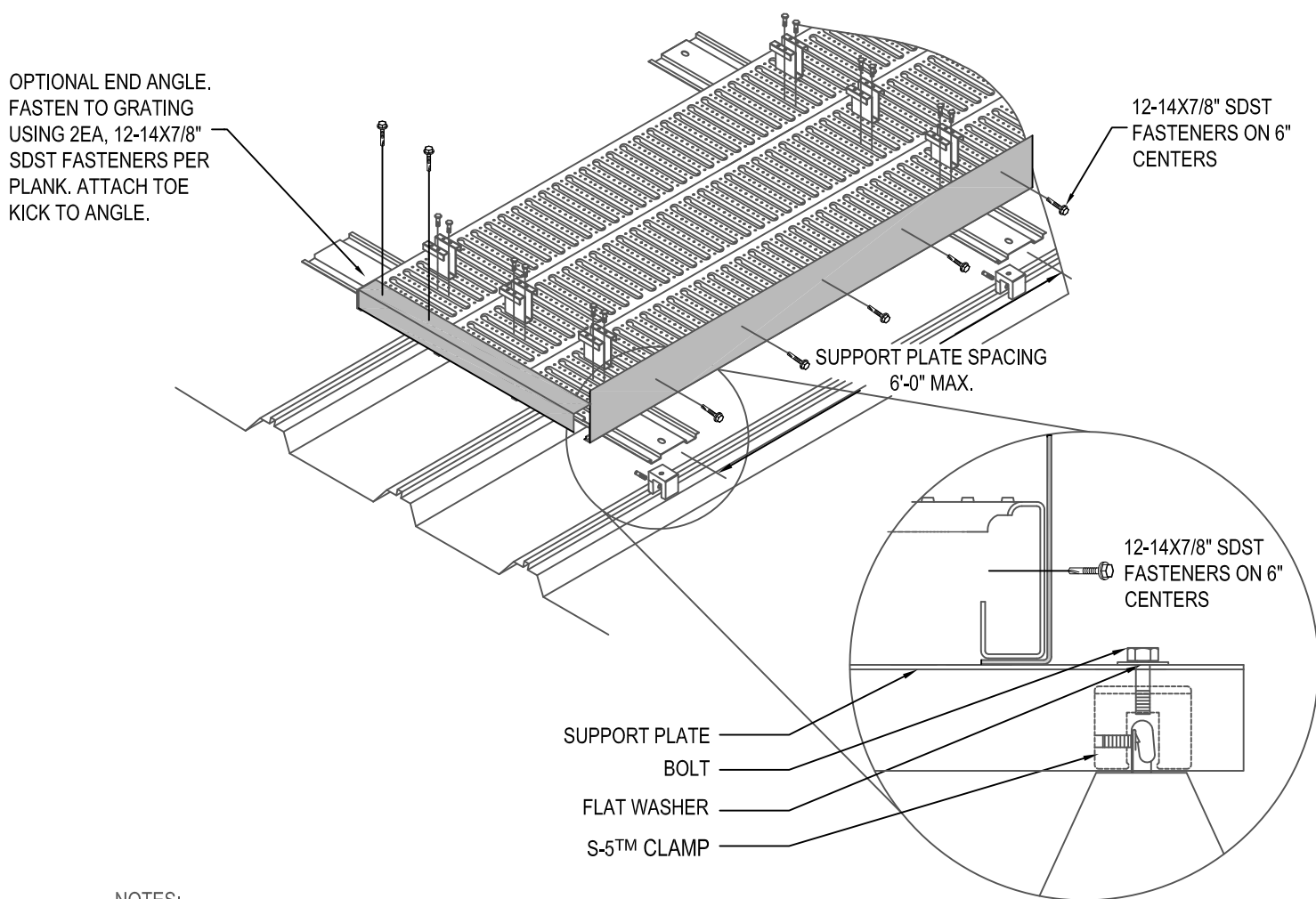
SWING GATE - PAGE 34

SWING GATE



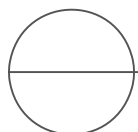


DESIGN COMPONENTS INC / METALWALK
 115 WALTER WAY
 FAYETTEVILLE, GA 30214
 PHONE: (800) 868-9910
 FAX: (770) 460-7872
 www.rooftopwalkway.com



NOTES:

1. INSTALLATION TO BE COMPLETED IN ACCORDANCE WITH MANUFACTURER'S SPECIFICATIONS.
2. DO NOT SCALE DRAWING.
3. THIS DRAWING IS INTENDED FOR USE BY ARCHITECTS, ENGINEERS, CONTRACTORS, CONSULTANTS AND DESIGN PROFESSIONALS FOR PLANNING PURPOSES ONLY. THIS DRAWING MAY NOT BE USED FOR CONSTRUCTION.
4. ALL INFORMATION CONTAINED HEREIN WAS CURRENT AT THE TIME OF DEVELOPMENT BUT MUST BE REVIEWED AND APPROVED BY THE PRODUCT MANUFACTURER TO BE CONSIDERED ACCURATE.
5. CONTRACTOR'S NOTE: FOR PRODUCT AND COMPANY INFORMATION VISIT www.CADdetails.com/info AND ENTER REFERENCE NUMBER 5018-005.



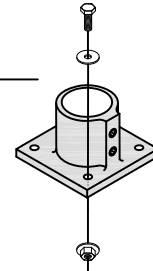
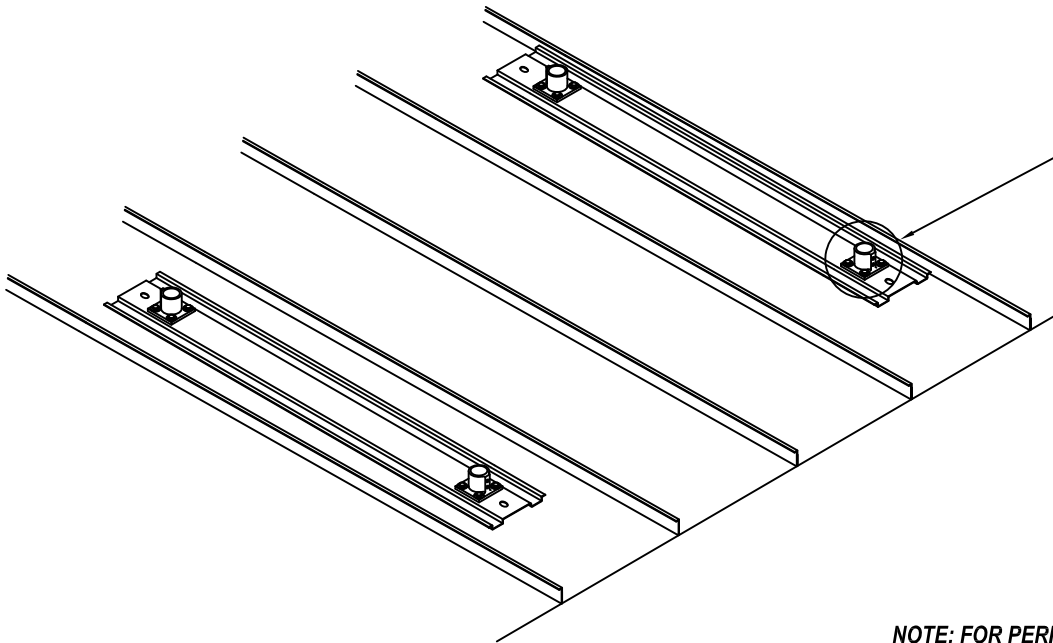
TOE-KICK - PAGE 35

36" WIDE METALWALK®, NO HANDRAIL, S-5™ CLAMP, PARALLEL



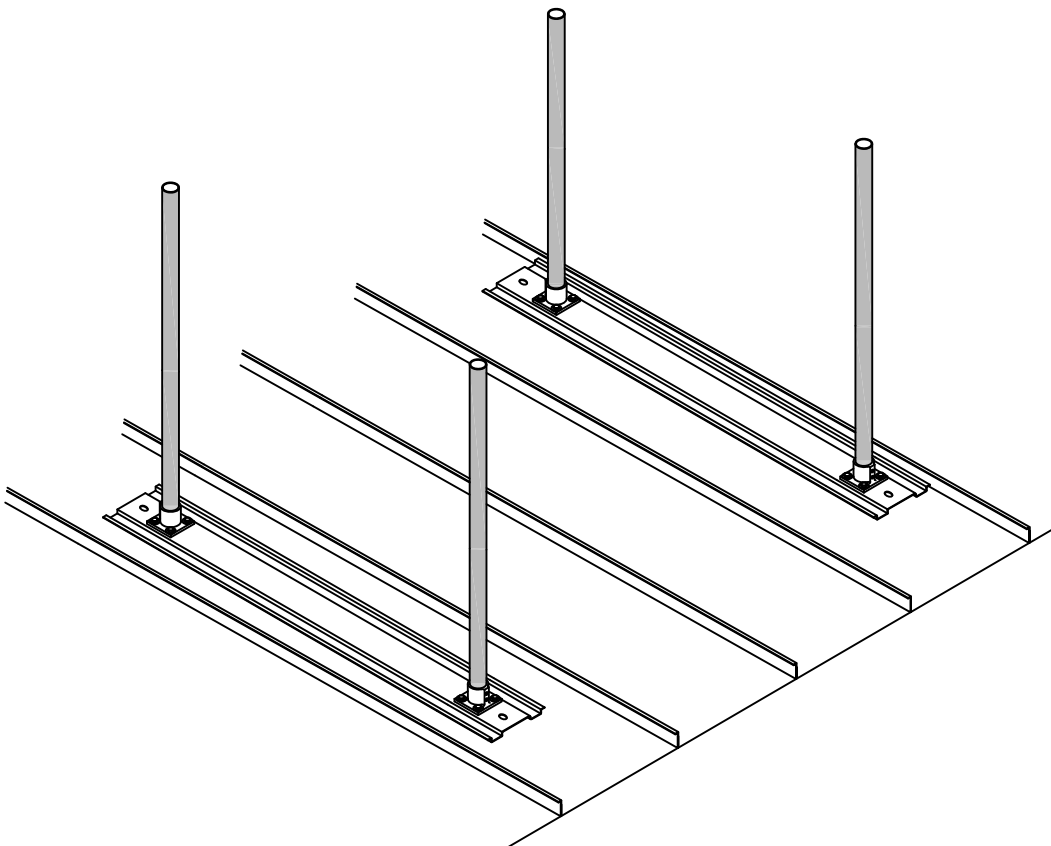


DESIGN COMPONENTS INC / METALWALK
115 WALTER WAY
FAYETTEVILLE, GA 30214
PHONE: (800) 868-9910
FAX: (770) 460-7872
www.rooftopwalkway.com

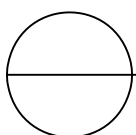


STEP 1 - ATTACH RAIL BASE TO SUPPORT PLATE USING 1 EA. 5/16" BOLT WITH 7/8" WASHER AND 1 EA. LOCK NUT PER HOLE. SIDE SHOWN SHOULD BE FACING OUT. SEE DIAGRAM.

NOTE: FOR PERIMETER HANDRAIL ONLY - SEE PAGE 39

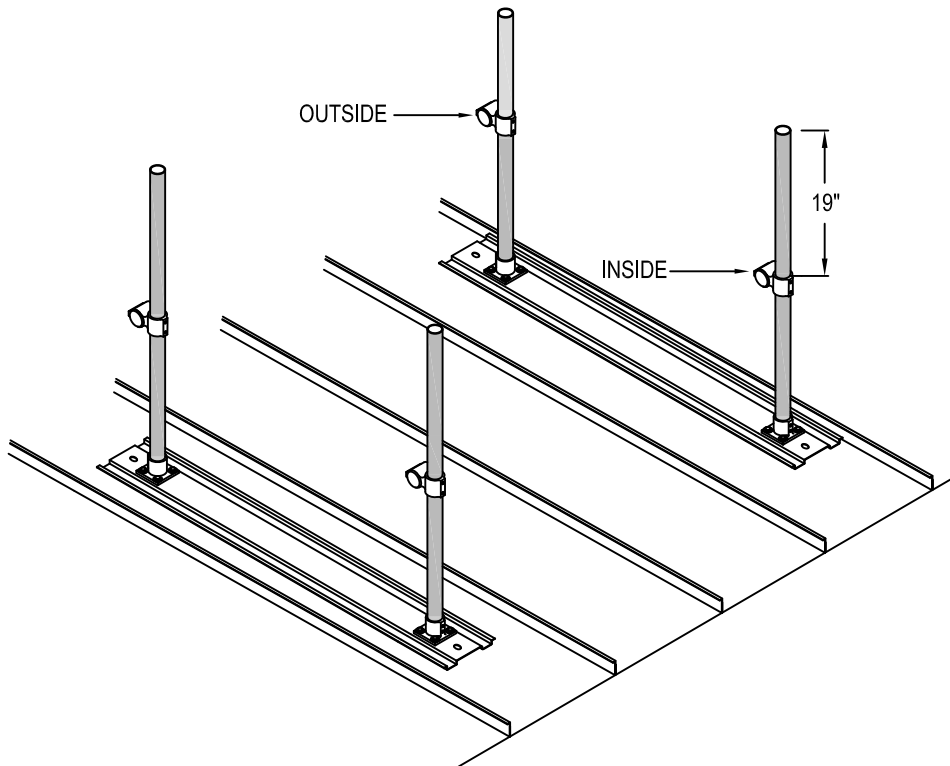


STEP 2 - INSERT 42-3/4" VERTICAL POST INTO RAIL BASE. USING A 3/16" HEX WRENCH, TIGHTEN BOTH SET SCREWS TO 16 FT POUNDS.



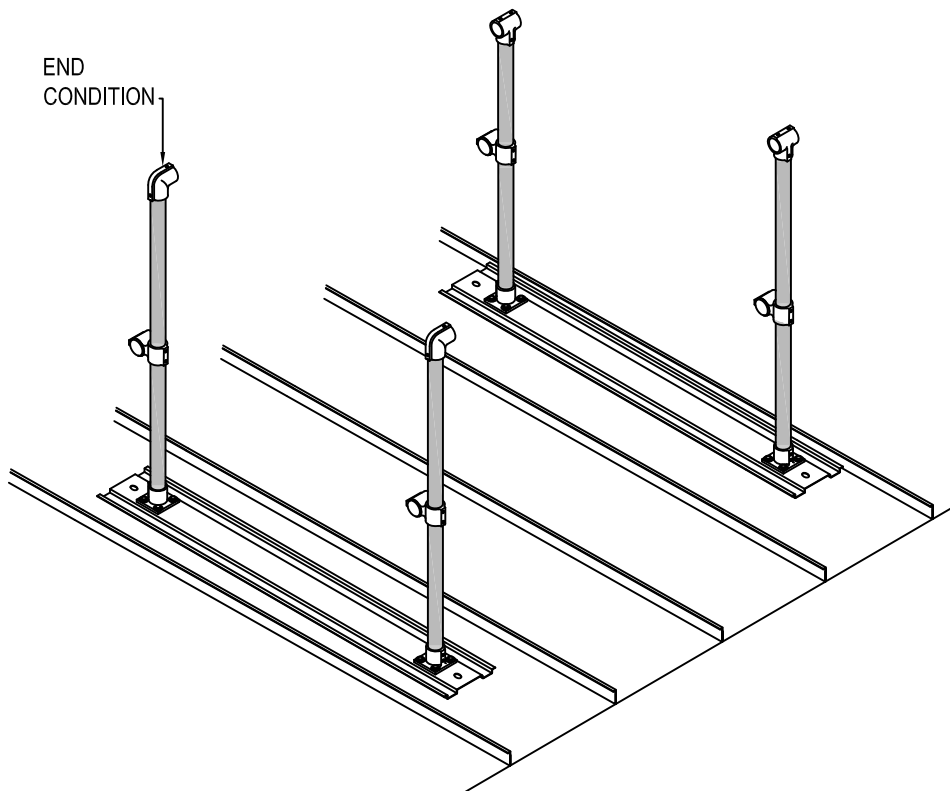


DESIGN COMPONENTS INC / METALWALK
115 WALTER WAY
FAYETTEVILLE, GA 30214
PHONE: (800) 868-9910
FAX: (770) 460-7872
www.rooftopwalkway.com

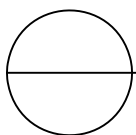


STEP 3: MEASURE 19" FROM TOP OF POST AND INSTALL CROSS. MEASUREMENT TO TOP OF CROSS FITTING. CROSS CAN BE INSTALLED ON INSIDE OR OUTSIDE OF POST.

NOTE: BOTH CROSSES INSIDE OR OUTSIDE.

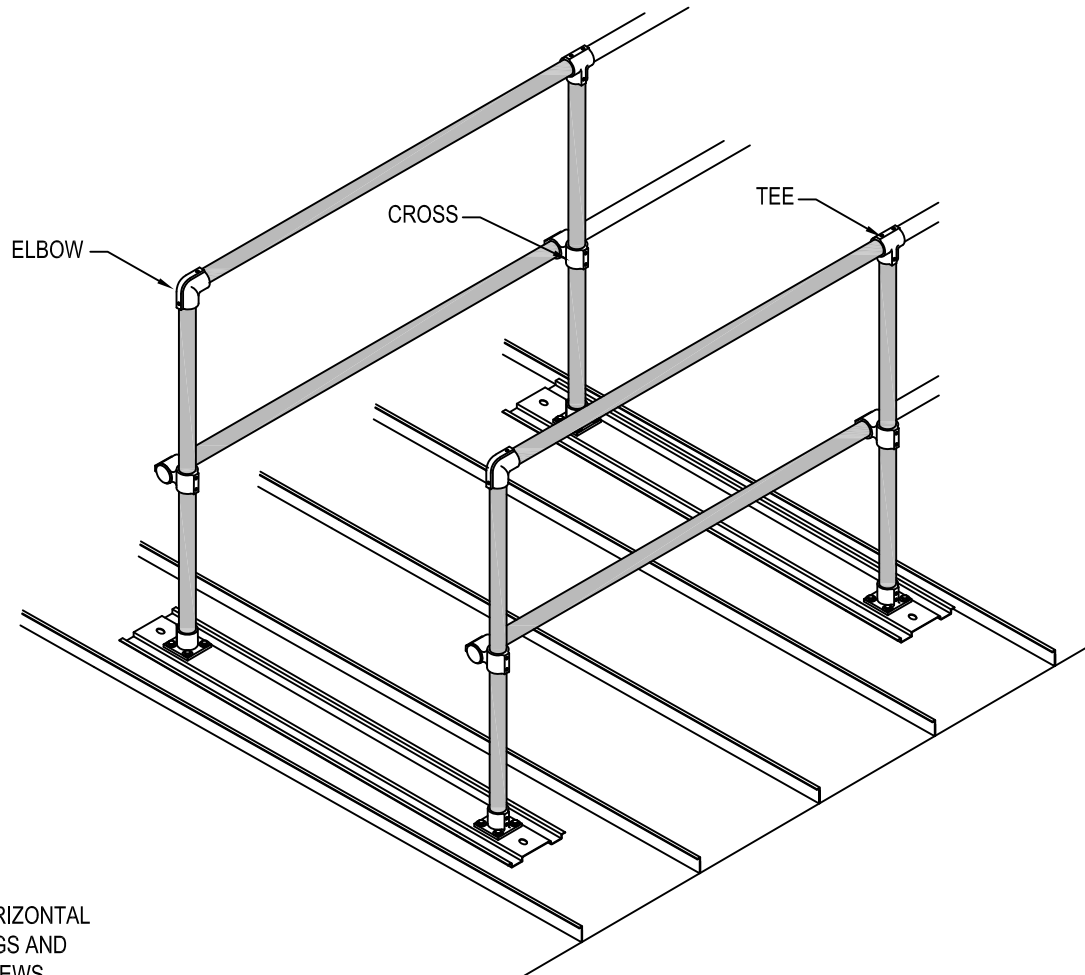


STEP 4: INSTALL TEE AT TOP OF POST. NOTE: BE SURE TO ALLOW ROOM FOR HORIZONTAL RAIL TO BE INSTALLED. INSTALL ELBOW AT END CONDITION.



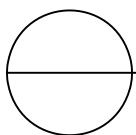


DESIGN COMPONENTS INC / METALWALK
115 WALTER WAY
FAYETTEVILLE, GA 30214
PHONE: (800) 868-9910
FAX: (770) 460-7872
www.rooftopwalkway.com



STEP 5: SLIDE HORIZONTAL
RAIL THRU FITTINGS AND
TIGHTEN SET SCREWS.

NOTE: SEE "CORNER CONDITIONS" PAGE 31.

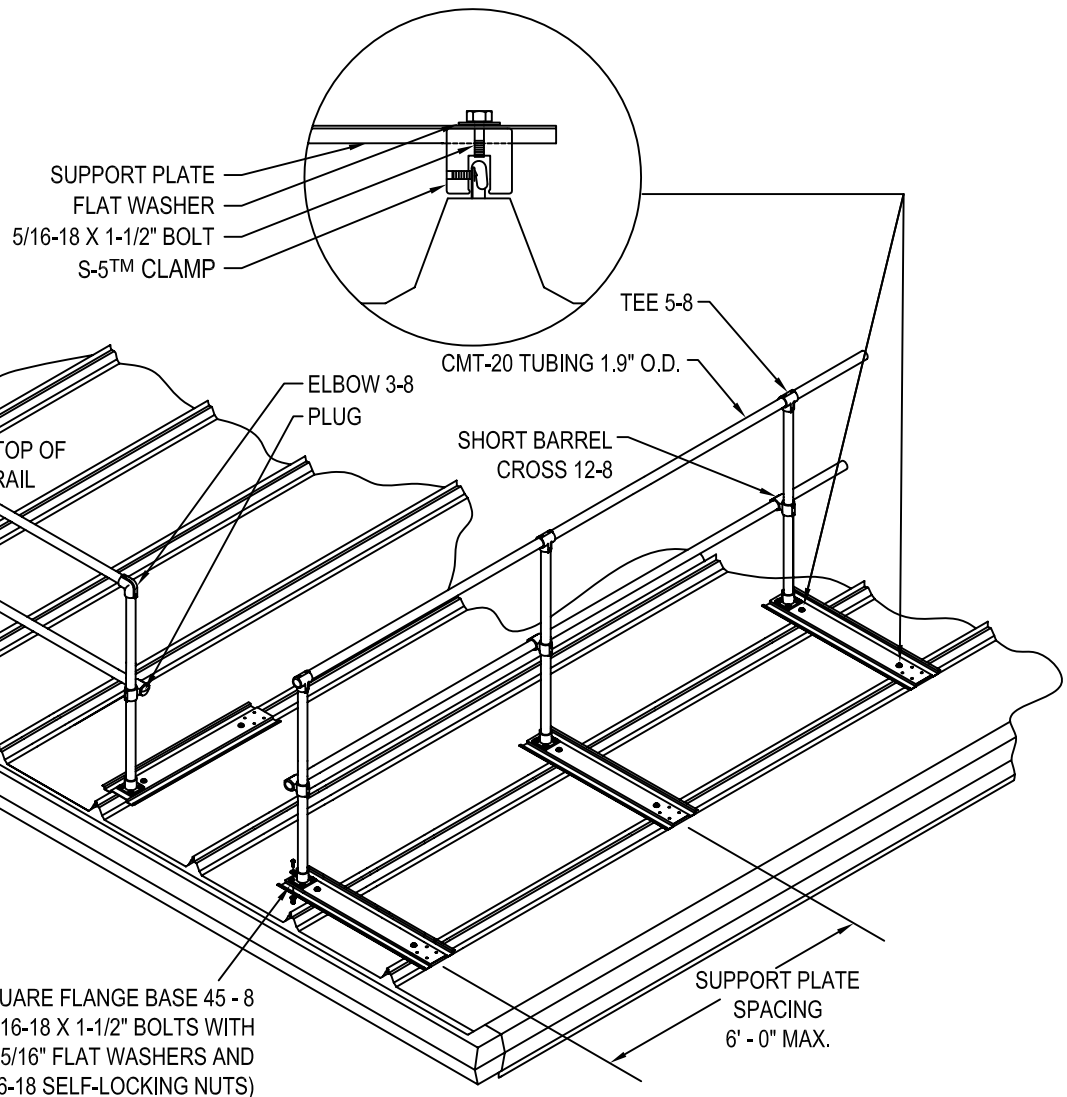




DESIGN COMPONENTS INC / METALWALK
115 WALTER WAY
FAYETTEVILLE, GA 30214
PHONE: (800) 868-9910
FAX: (770) 460-7872
www.rooftopwalkway.com

NOTES:

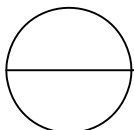
- 1- INSTALLATION PROCEDURE SAME AS SHOW ON PAGES 36-38.
- 2- VERTICAL POST FOR PERIMETER HANDRAIL IS 38".
- 3- MEASUREMENT FROM TOP OF POST TO TOP OF CROSS FITTING IS 19".
- 4- 42" HEIGHT IS MEASURED FROM THE FLAT OF THE PANEL TO THE TOP OF THE HORIZONTAL PIPE.



OSHA 1910.29(b)(1) STATES "THE TOP EDGE HEIGHT OF TOP RAILS, OR EQUIVALENT GUARDRAIL SYSTEM MEMBERS, ARE 42" PLUS OR MINUS 3 INCHES ABOVE THE WALKING-WORKING SURFACE.

NOTES:

1. INSTALLATION TO BE COMPLETED IN ACCORDANCE WITH MANUFACTURER'S SPECIFICATIONS.
2. DO NOT SCALE DRAWING.
3. THIS DRAWING IS INTENDED FOR USE BY ARCHITECTS, ENGINEERS, CONTRACTORS, CONSULTANTS AND DESIGN PROFESSIONALS FOR PLANNING PURPOSES ONLY. THIS DRAWING MAY NOT BE USED FOR CONSTRUCTION.
4. ALL INFORMATION CONTAINED HEREIN WAS CURRENT AT THE TIME OF DEVELOPMENT BUT MUST BE REVIEWED AND APPROVED BY THE PRODUCT MANUFACTURER TO BE CONSIDERED ACCURATE.
5. CONTRACTOR'S NOTE: FOR PRODUCT AND COMPANY INFORMATION VISIT www.CADdetails.com/info AND ENTER REFERENCE NUMBER 5018-023.



HANDRAIL SYSTEM - PERIMETER RAILING - PAGE 39

PERIMETER RAILING

