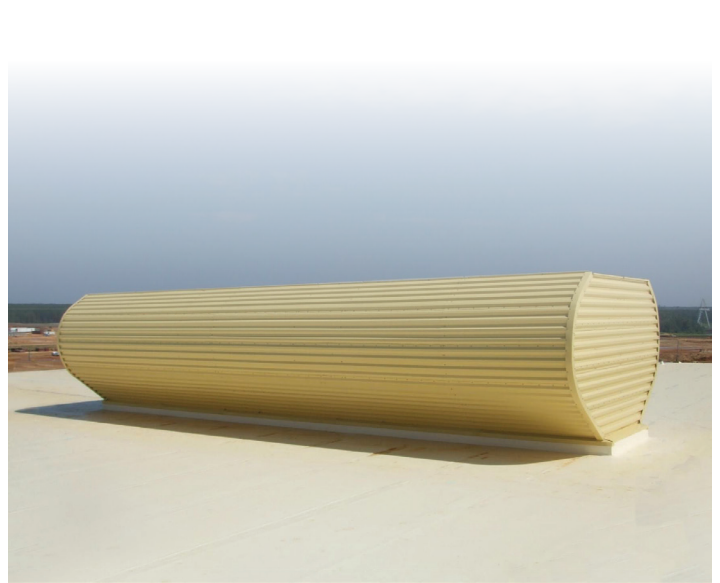




RIDGE VENT (LARGE THROAT)



The MoffittVent™ is a natural ventilation device that is capable of exhausting large volumes of warm air from a building without letting any rain enter the building. It is ideal for heavy-industrial, high heat applications. This powerful ventilator has helped buildings lower temperatures for nearly 60 years

SPECIFICATIONS

STANDARD FEATURES

- Throat width: 24" - 180"
- Length: 10' - 1000'+
- Mounting: Ridge, Slope, or Single Peak
- Prime painted red
- Galvalume sheeting, Mill Finish
- Stainless steel sheeting fasteners
- 100% free area to face area ratio
- Gutters and Downspouts
- Mounting Fasteners
- Designed to meet local wind & snow codes
- Installation instructions
- 1/2" mesh 19 ga. Galvanized steel bird screen

PRODUCT BENEFITS

- Uses no energy, has no operating costs, and requires little to no maintenance.
- No water entry at any wind velocity. All water is collected and redirected onto the roof.
- Efficiency is not affected by the direction or velocity of the wind. Performance increases with wind.
- Adaptable to many building types with many specialty features.
- Designed to meet local wind/snow loads.
- Contributes zero sound to building.

OPTIONAL FEATURES

Sheeting

- Aluminum
- Stainless Steel
- Fiberglass

Painted Sheeting

- Kynar® Exterior with Wash Coat Interior
- Kynar® Interior and Exterior
- Other Specialty coatings

Frames

- Prime painted gray
- Hot dip galvanized
- Custom spec

Damper

- Manual damper
- Motorized damper

Installation

- Turnkey with Extended Warranty
- Supervision