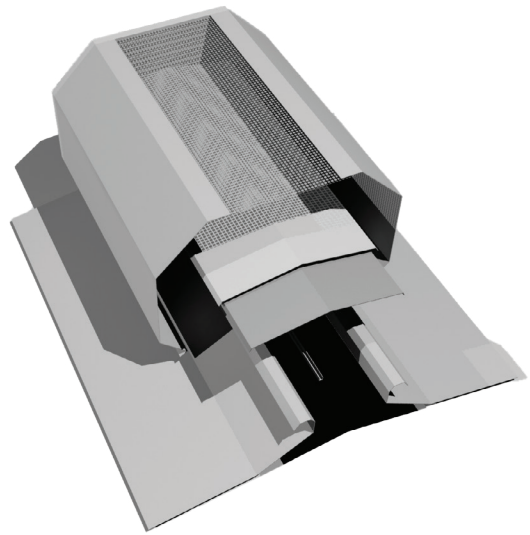




CONTINUOUS RIDGE VENT



A properly engineered ventilation system using continuous ridge ventilators controls the movement of fresh air through the building removing hot, stale air and air contaminated by manufacturing or production processes. Summer heat is released naturally through gravity ridge ventilators. During winter proper ventilation can assist in the control of condensation and other moisture problems, such as rust and deterioration of insulation or the damage to stored products.

SPECIFICATIONS

CONSTRUCTION

- Constructed of 26 Ga. Steel exterior shell combined with internal components of 24, 20 and 18 gauge die formed sheet metal and machined parts

DESIGN

- Aerodynamically proportioned to exclude weather protects air passages and full outlet area.
- Continuous slot on bottom of both sides of windbands allows for drainage
- Can accommodate up to 6:12 roof pitch
- Fully protected by a 4x4 mesh Galvanized hardware cloth bird screen
- Operable damper opens to any degree from full open to fully closed with pull chain operator



FINISH

- Mill Finish Galvalume™, Pre-Coated or Baked Enamel Finish applied to match most metal building colors

STANDARD SIZES

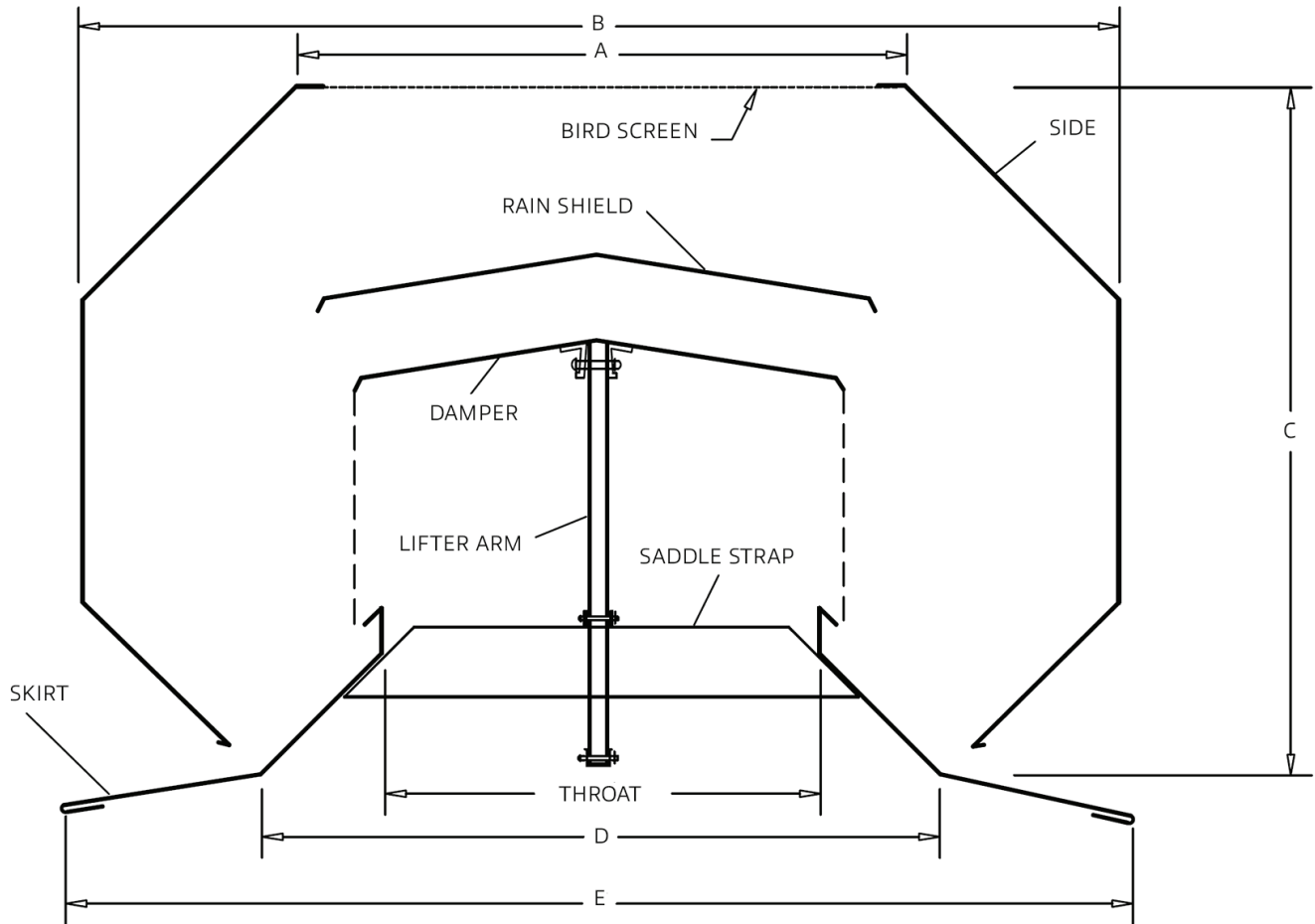
- 9" throat and 12" throat shipped in 10' long sections which can be installed as individual units or in continuous runs

OPTIONS

- Vents may be furnished with or without dampers.
- Cable, pulleys and boat winch operator provides manual operation of continuous runs up to 5 units
- Electric or Pneumatic operator can provide automatic operation for continuous runs up to 5 units
- Die-Formed Skirt available for standard "R" panel
- Florida Product Approval

SPECIAL SIZES, MATERIAL & FINISHES AVAILABLE

TECHNICAL DATA



DIMENSIONS

THROAT*	A	B	C	D	E
4"	6-1/4"	12-1/2"	9"	10"	18"
9"	13"	21-1/4"	14-1/2"	16"	28-1/4"
12"	17"	28-1/2"	18"	20-3/4"	33"

* Other throat sizes available upon request.
Roof panels must extend to "D" dimension for proper support and drainage.

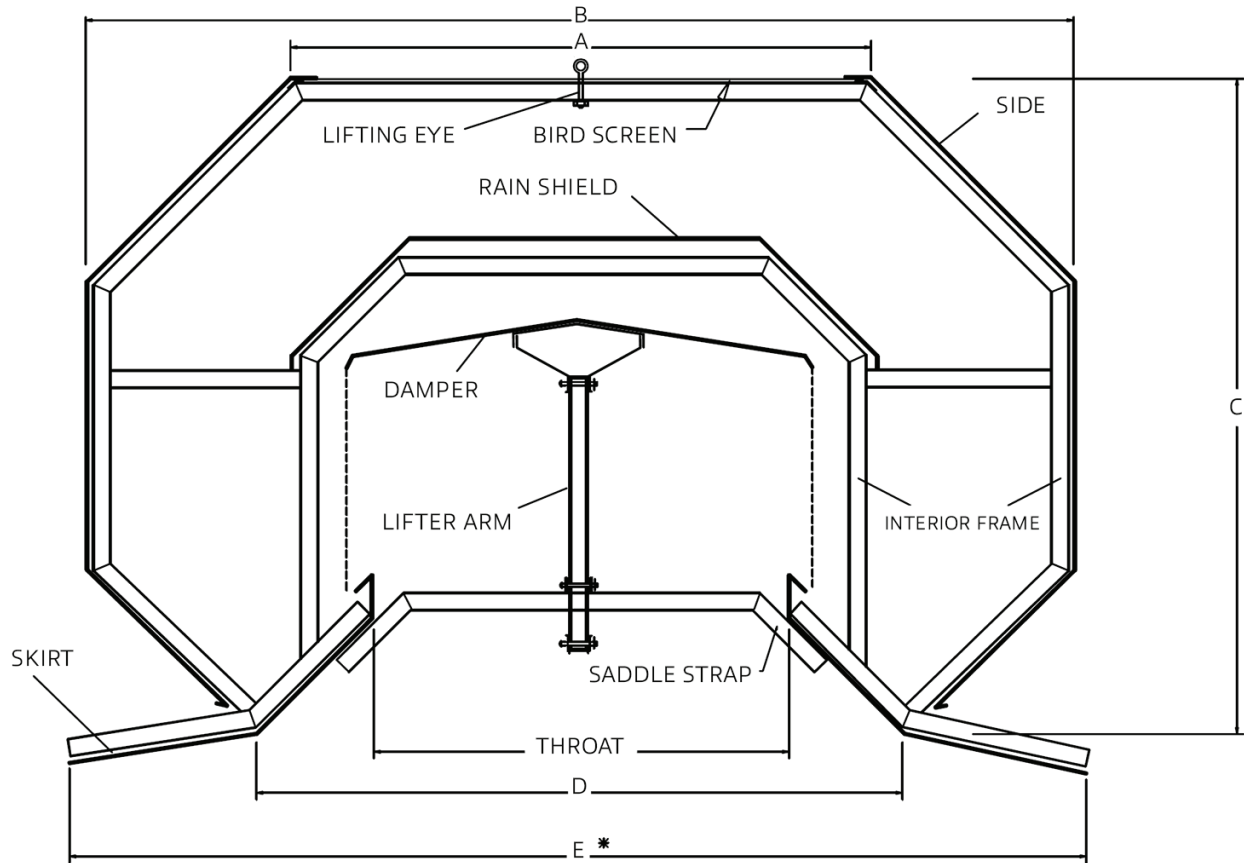
SHIPPING WEIGHT

THROAT	STANDARD CRATED	PACKAGE SIZE (L x W x H)
4"	190 LBS.**	125" X 20" X 14"
9"	230 LBS.**	125" X 30-1/2" X 20"
12"	250 LBS.**	125" X 34-3/4" X 24"

** Approximate weight.

15" TO 48" THROAT WELDED FRAME RIDGE VENTILATORS

NOTE: Interior frame made of 1/8" x 1-1/2" x 1-1/2" angle pre-galvanized. All other parts made of 24 gauge sheet metal, galvalume, polar white or painted color.



THROAT	A	B	C	D	E*	WEIGHT (Not Crated)	DESIGN PRESSURE
15"	22-5/8"	38-31/32"	26-1/2"	25-1/8"	41-3/16"	275 LBS.	-97.1 PSF
18"	25-7/16"	44"	30-5/16"	29-1/8"	47-3/16"	300 LBS.	-88.2 PSF
24"	33-1/4"	57"	38-3/16"	37-3/8"	59-3/8"	400 LBS.	-70.4 PSF
30"	38-9/16"	67-1/2"	45-3/8"	46-5/8"	69-5/8"	450 LBS.	-52.5 PSF
36"	47-9/16"	81-1/4"	53-13/16"	55-1/2"	83-3/4"	500 LBS.	-34.7 PSF
42" **	56"	94-1/8"	61-1/8"	62-1/8"	95-1/2"	575 LBS.	N/A
48" **	67-3/8"	106-1/8"	65-7/8"	67-5/8"	107-7/8"	650 LBS.	N/A

Dimensions are of vent frames only and do NOT include thickness of sheet metal.

* Listed dimensions are based on a 1:12 roof pitch.

** Must ship unassembled (knockdown.)

Roof panels must extend to "D" dimension for proper support and drainage.

TABLE OF CAPACITIES FOR CONTINUOUS VENTILATORS

CAPACITY:

To determine capacity per unit, multiply "Base Rating" by "Temperature-Height Factor":

CFM = Base x Temperature-Height Factor

(Based on fresh air intake area 1-1/2 times ventilator throat area. Assumes 5 mph wind speed)

BASE RATINGS

THROAT SIZE	C.F.M.
4"	1200
9"	2700
12"	3600
15"	4500
18"	5400
24"	7200
30"	9000
36"	10800
42"	12600
48"	14400

TEMPERATURE-HEIGHT FACTORS

HEIGHT	TEMPERATURE DIFFERENCE								
	5°	10°	15°	20°	25°	30°	35°	40°	45°
10'	0.37	0.49	0.58	0.64	0.70	0.76	0.81	0.86	0.95
15'	0.42	0.60	0.71	0.8	0.86	0.92	0.99	1.05	1.09
20'	0.53	0.70	0.81	0.92	0.99	1.07	1.14	1.22	1.26
25'	0.58	0.77	0.89	1.00	1.08	1.18	1.25	1.33	1.36
30'	0.63	0.83	0.97	1.08	1.17	1.28	1.36	1.45	1.50
35'	0.66	0.87	1.02	1.14	1.24	1.35	1.44	1.51	1.58
40'	0.70	0.93	1.08	1.22	1.3	1.41	1.5	1.61	1.68
45'	0.74	0.96	1.12	1.28	1.38	1.48	1.59	1.68	1.75
50'	0.77	1.01	1.18	1.33	1.44	1.56	1.67	1.75	1.83
55'	0.80	1.06	1.23	1.39	1.50	1.64	1.72	1.83	1.92
60'	0.83	1.09	1.28	1.44	1.55	1.69	1.79	1.90	2.00
65'	0.85	1.12	1.32	1.48	1.61	1.74	1.85	1.97	2.06
70'	0.88	1.17	1.36	1.53	1.67	1.79	1.89	2.02	2.11
75'	0.90	1.19	1.39	1.57	1.69	1.83	1.96	2.06	2.17
80'	0.93	1.22	1.42	1.61	1.72	1.86	2.00	2.11	2.20

Height = Vertical rise from inlets near floor to ventilator

Temperature = Estimated temperature difference between middle of air intake near the floor and ventilator with dampers open

CONTINUOUS RIDGE VENTILATOR OPERATORS

OPERATOR A - HAND PULL

- 40' Cable
- (2)Cable Clamps
- (1)Chain Catch
- (2)Pulleys with Eyebolts

OPERATOR C - LEVER

(Operates up to 6–9" vents or 4–12" vents)

- 40' Cable
- (2)Pulleys with Eyebolts
- (2)Cable Clamps
- (1)Eyebolt (not welded) with Nuts
- (1)Lever Handle with Mounting Hardware
- (1)Installation Instructions

OPERATOR D - BOATWINCH

(Operates up to 8–9" vents, 6–12" vents, 4–24" vents or 3–36" vents)

- 60' Cable
- (2)Pulleys with Eyebolts
- (1)Boatwinch
- (1)Cable Catch
- (2)Eyebolts (not welded) with Nuts
- (2)Cable Clamps
- (1)Mounting Hardware
- (1)Installation Instructions

OPERATION EXTENSION

- 50' Cable
- (2)Cable Clamps
- (2)Eyebolts (not welded) with Nuts

DUFF NORTON OPERATOR

(Operates up to 10–9" vents or 7–12" vents)

- Duff Norton Motor