



LUMISHADE



VERSATILE AND ADAPTABLE TO MEET YOUR NEEDS.

The Lumishade canopy is an economical, highly versatile canopy system designed for a wide variety of applications. The roll-formed decking offers a high-load capacity and is delivered in pre-assembled sections to allow for ease of installation. This functional canopy protects from the elements without sacrificing design options and flexibility. The Lumishade canopy will stand the test of time, while keeping you on budget.

LUMISHADE

TECHNICAL DATA

All Aluminum (T6 - 6063)

Fascia .125"

Decking .040" Roll-formed

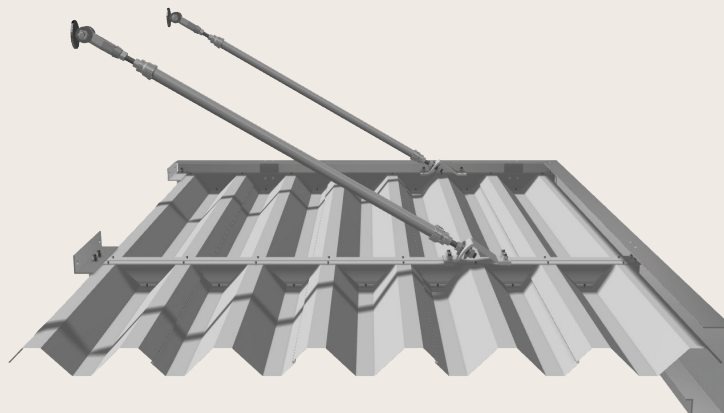
Deflection rating L/180

Maximum Projection

10' w/ hanger rod supports

5' w/ cantilever supports

Note: Engineered stamped calcs available in all 50 states



CANOPY DETAILS

Finishes		Warranty		Application
Mapes Standard Finishes	Clear Anodized, White Baked Enamel, & Bronze Baked Enamel	1 year	Meets AAMA 2603 specifications	Factory applied
2-Coat Kynar*	25 stock colors w/ unlimited custom matching options	10 years	70% Fluoropolymer meets AAMA 2605 specifications	Professionally applied & cured by certified finisher

*Additional lead times and costs associated w/ premium paints & custom color matching

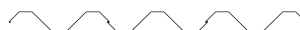
FEATURES

- .040 Roll-formed decking
- Economical
- High-load capacity
- Modular design
- Rust & maintenance free
- Custom details & colors
- Pre-assembled sections

APPLICATIONS

- Door & window covers
- Loading docks
- Parking garages
- Storefronts
- Passive solar
- Shopping centers

DECK OPTIONS



.040 ROLL-FORMED ALUMINUM

FASCIA OPTIONS



8" J



8" C-CHANNEL



10" C-CHANNEL



12" C-CHANNEL



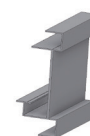
8" J WITH 3" EXTENSION



8" J WITH 4" EXTENSION

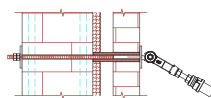


12" SMOOTH FACE

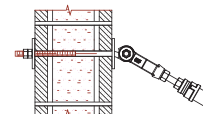


CUSTOM

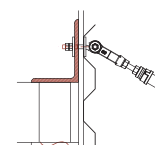
WALL MOUNT DETAILS



BRICK/BLOCK WITH THRU BOLT AND COMPRESSION SLEEVE



CMU WITH THRU BOLT

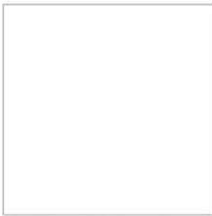


METAL BUILDING

MAPES STANDARD FINISHES



CLEAR ANODIZED *



MAPES WHITE BAKED
ENAMEL

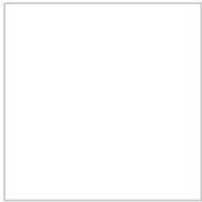


MAPES BRONZE BAKED
ENAMEL

** Color is not representative of Clear Anodized. Please consult factory for actual sample.*

MAPES TWO COAT KYNAR COLORS

Premium Charges Apply



MAPES WHITE



BONE WHITE



SANDSTONE



SIERRA TAN



PEBBLE GRAY



SEAWOLF



CHARCOAL GRAY



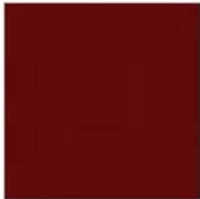
TERRA COTTA



COLONIAL RED



REGAL RED



BRANDYWINE



HEMLOCK GREEN



AGED COPPER



FOREST GREEN



HARTFORD GREEN



Caramel



TEAL



MILITARY BLUE



INTERSTATE BLUE



NIGHT HORIZON BLUE



MANSARD BROWN



ANTIQUE BRONZE



MAPES BRONZE



EXTRA DARK BRONZE