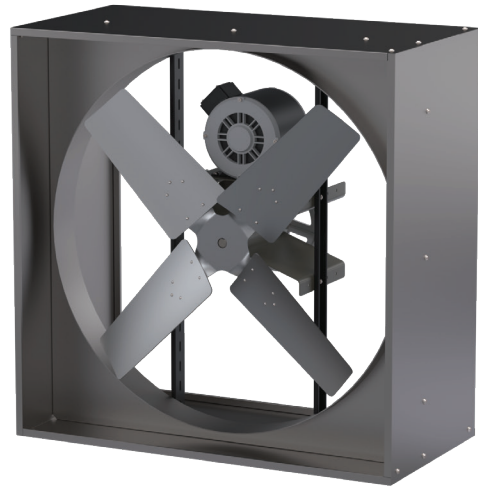




## WALL EXHAUST FANS



### SPECIFICATIONS

---

#### **CONSTRUCTION**

- Heavy gauge Galvanized steel frame
- Motor and drive mounted in a pre-assembled wall housing for easy installation in existing wall
- Wall Shutters feature extruded aluminum mill finish blades and durable powder coated steel frame that mounts to fan housing

#### **DESIGN**

- Fans with exclusive "X-Wing" automatic belt tensioning system incorporating motor and bearing mounts extends motor life and eliminates the need for belt adjusting
- Furnished standard on all 36" & 48" wall fans with up to 1-1/2 hp motors
- Shutter automatically opens when fan is switched on and closes when air flow stops

#### **OTHER SIZES & OPTIONS AVAILABLE**

#### **STANDARD STOCK SIZES**

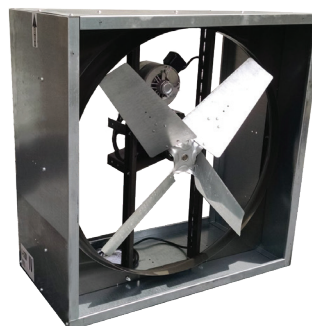
- 36" Diameter Propeller (40" X 40" Frame) 1/2hp, 115/1/60 Belt-Drive Motor - 10,400cfm
- 48" Diameter Propeller (52" X 52" Frame) 3/4hp, 115/1/60 Belt-Drive Motor - 18,900cfm
- We also carry 24", 30", 42", 54" and 60" diameter blade size fans

#### **MOTOR OPTIONS**

- Single or 3 phase motors available from 1/2 to 5 hp
- Totally enclosed and explosion-proof motors available when specified

#### **ACCESSORIES**

- Fan Guard (required if fan is mounted within 7' AFF)
- Motorized Shutter (for supply fan only)
- Weather Hood (shipped knocked down)

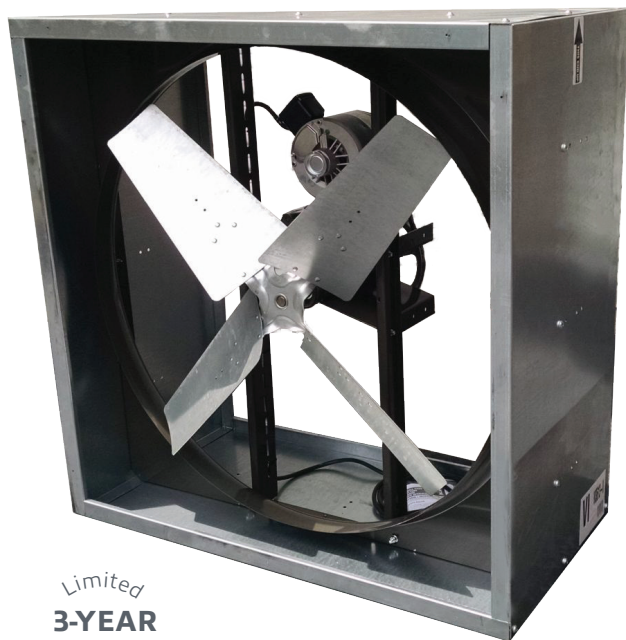


# "VI" SERIES INDUSTRIAL FANS

- Standard units from 1/3 to 5 HP (4,100 to 43,100 cfm)
- Extra heavy duty components and frame with durable powder coat finish
- Unique fastening system for easy field adjustment

## Exclusive "X-Wing" Belt Tensioner

Incorporates the motor and bearing mounts along with a super efficient Belt Tensioner to enhance the life of the motor. It is standard equipment on the VI 2412 through the VI 4816. Fans with motors larger than 1 1/2 HP have the standard stationary motor and bearing mounts.



Limited  
**3-YEAR**  
Warranty

## SPECIFICATIONS

MODEL NO.	BLADE DIA.	MOTOR CFM	RPM	HP	AMPS	VOLTS	SHIP WT. (LBS)	OVERALL SQ. SIZE	DEPTH
VI 3613	36	10,400	550	1/2	11	115	138	40 3/4"	20"
VI 4814	48	18,900	455	3/4	13/16.5	115/230	187	52 3/4"	20"

## REQUIRED FRAMED OPENING SIZES (Supplied by others)

- VI 3613 - 41" x 41" ID
- VI 4814 - 53" x 53" ID

*Note: OSHA backguards available upon request*



Metal Building Installation



Gravity Damper



X-Wing Tensioner