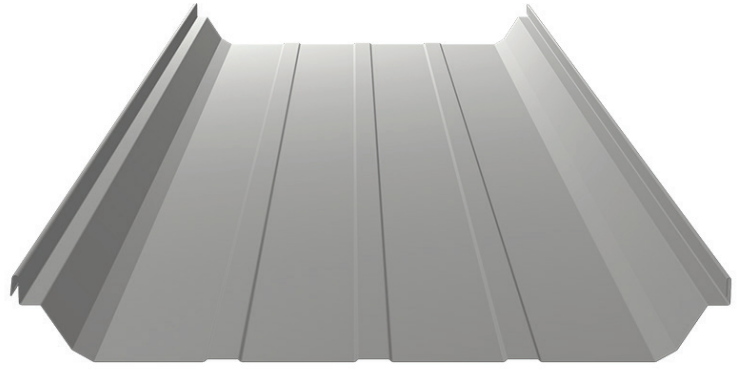




FLOATING FRAME SUPPORT FOR SSR

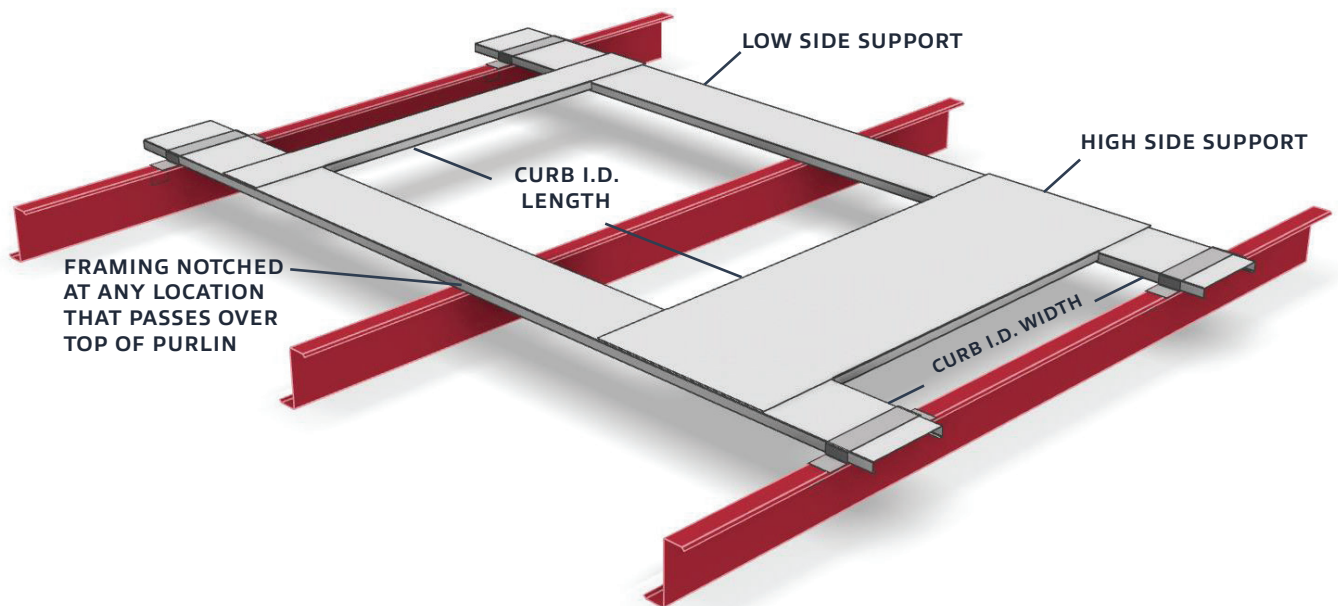
FOR ALL STANDING SEAM ROOF PANEL TYPES



SPECIFICATIONS

FEATURES

- Quick and easy assembly
- Available in 12ga or 14 ga Galvanized Steel
- Provides structural integrity
- High wind uplift resistance
- Attaches directly to purlins or joists
- Contracts and expands with roof system



ROOF INSULATION OMITTED FOR CLARITY

1 of 3

INSTALLATION DETAILS - SINGLE BAY

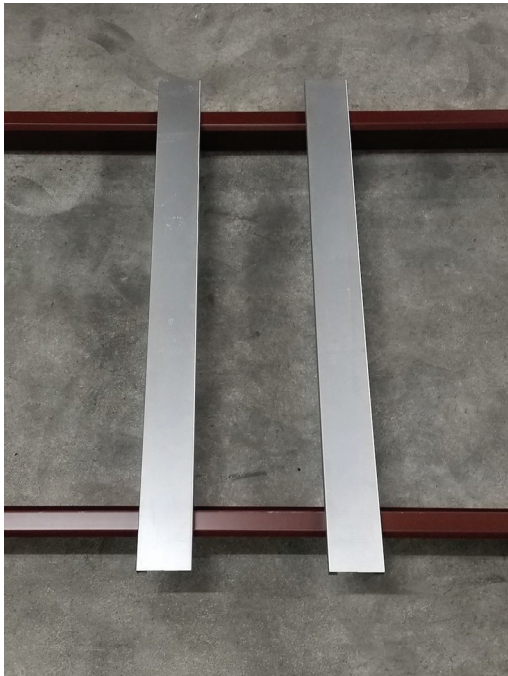
REQUIRED INFORMATION TO ORDER: PURLIN SPACING? STAND-OFF DIMENSION? (See step 8)



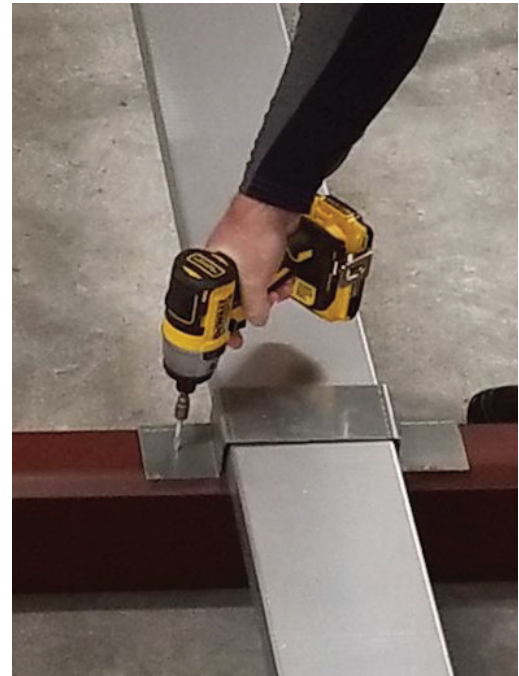
1. Install first side support.



2. Side supports overhang purlins approx. 6" on each end.

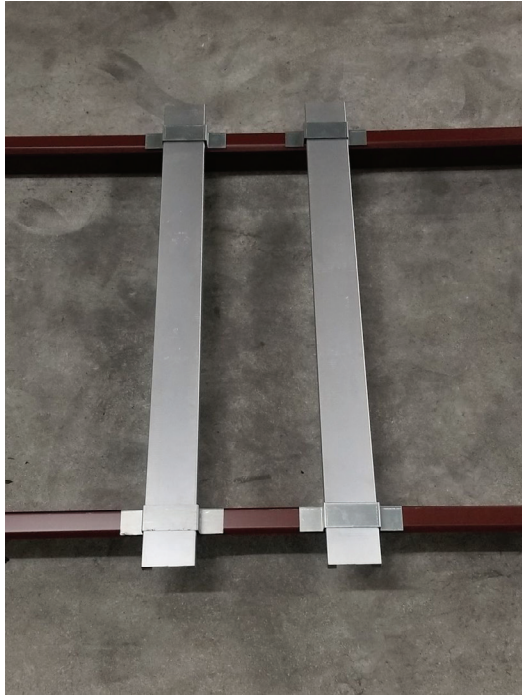


3. Line up second side support to match your Curb I.D.

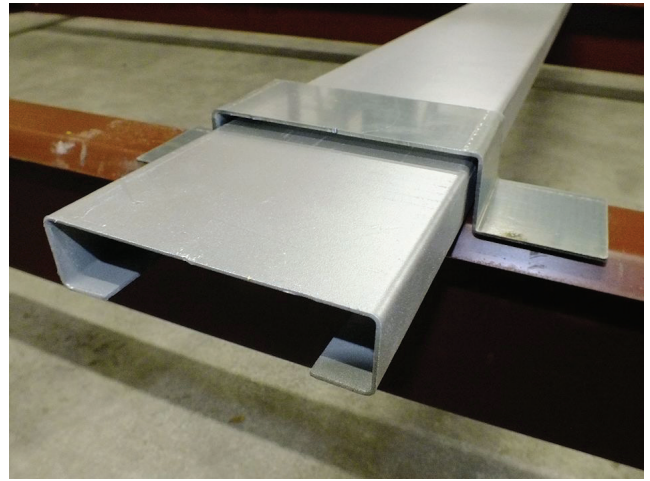


4. Install hold-down clips at all four Purlin/Support end conditions

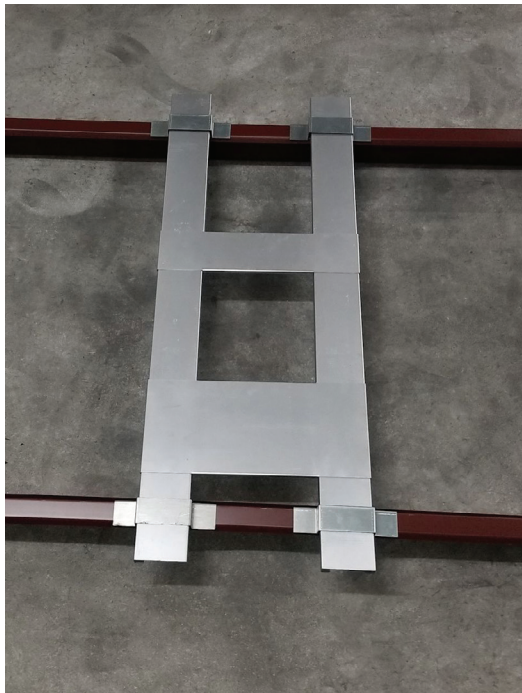
INSTALLATION DETAILS - SINGLE BAY



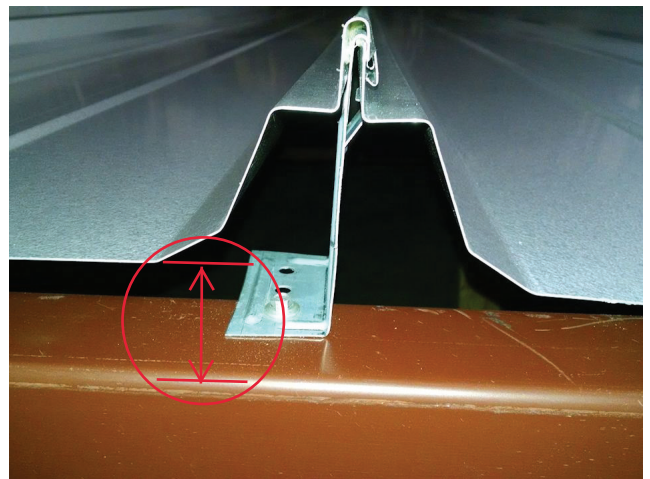
5. All hold-down clips installed.



6. The gap between the hold-down clips and the side supports allows for proper movement with the roof panels.



7. Line up both end supports to match your curb I.D.



8. The stand-off dimension is the gap distance between the top of the Purlin and the bottom of the roof panel