

INSTALLATION DETAILS - DOUBLE BAY

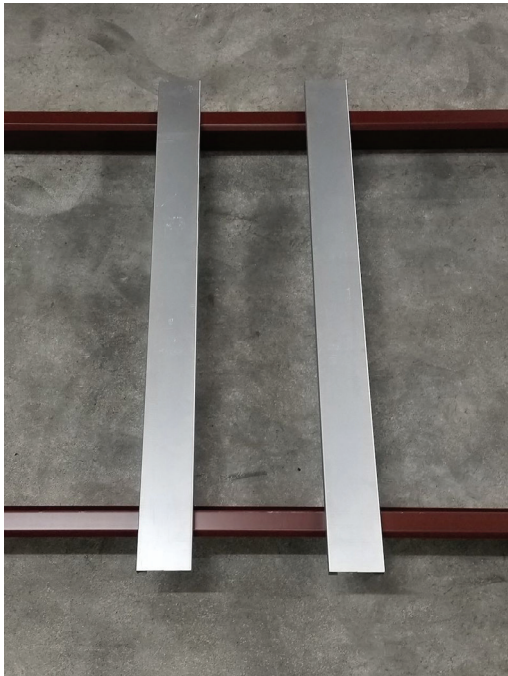
REQUIRED INFORMATION TO ORDER: PURLIN SPACING? STAND-OFF DIMENSION? (See step 8)



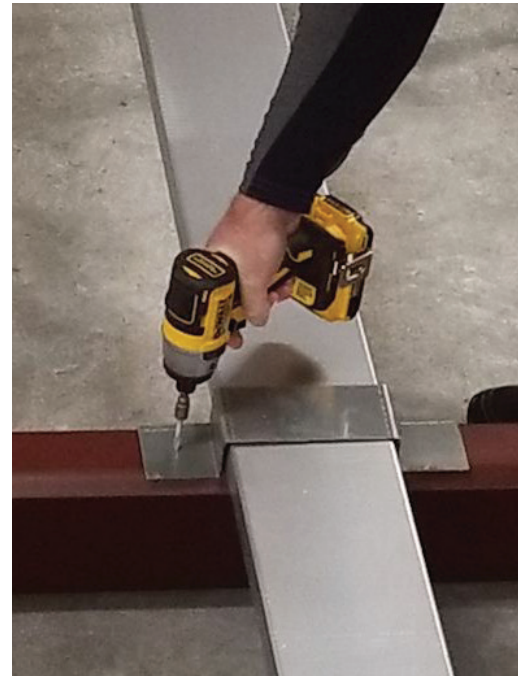
1. Install first side support.



2. Side supports overhang purlins approx. 6" on each end.

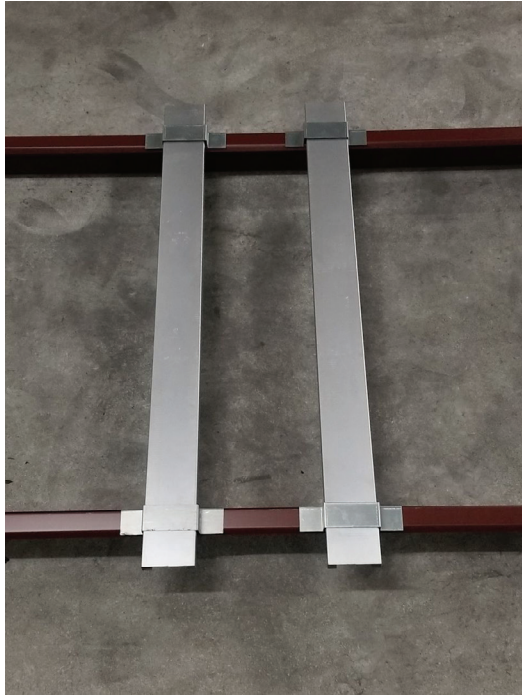


3. Line up second side support to match your Curb I.D.

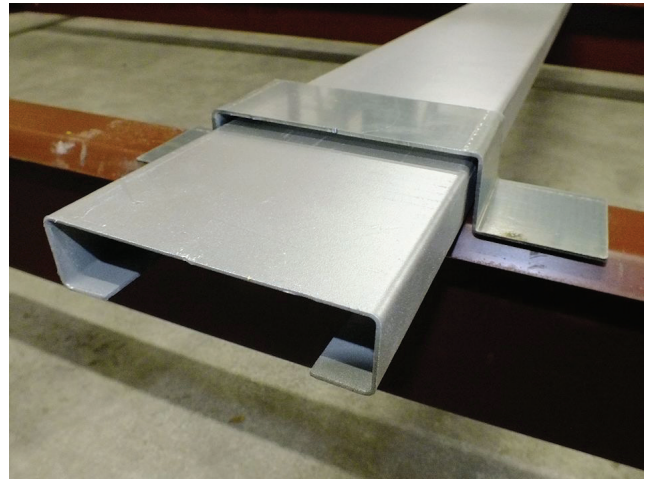


4. Install hold-down clips at all four Purlin/Support end conditions

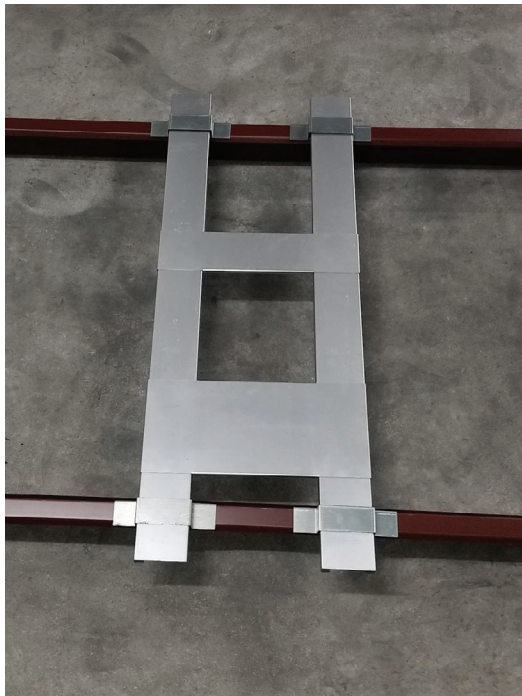
INSTALLATION DETAILS - DOUBLE BAY



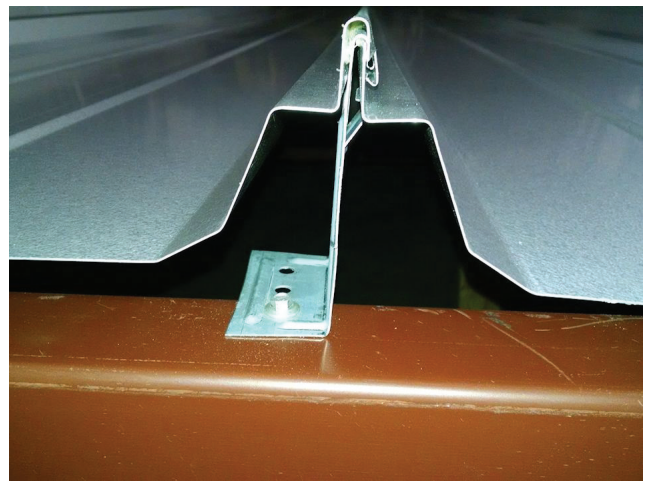
5. All hold-down clips installed.
(Typically only required on ends of supports)



6. The gap between the hold-down clips and the side supports allows for proper movement with the roof panels.



7. Line up both end supports to match your curb I.D.



8. The stand-off dimension is the gap distance between the top of the Purlin and the bottom of the roof panel