

**The right way to attach almost anything to metal roofs!**

# S-5!®

## The Right Way!

### VersaGard™

VersaGard™ is compatible with almost any trapezoidal, exposed-fastened profile. No messy sealants to apply! No chance for leaks! VersaGard comes with factory-applied butyl sealant already in the base, and the S-5!®-patented reservoir conceals the sealant from UV exposure, preventing drying and cracks.

Installation is simple! VersaGard is mounted in the flat of the panel, directly into the supporting structure of the roof, i.e. wood decking, wood or steel purlins, or trusses. No surface preparation is necessary; simply wipe away excess oil and debris, peel the release paper from the base, align, and apply. Secure through the pre-punched holes using the appropriate screws for the supporting structure.

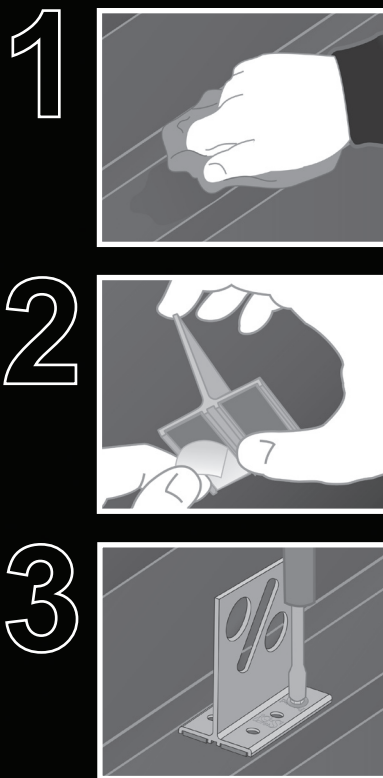
While the circular holes in the vertical part of the bracket support 1" pipes, the diagonal slot provides flexible support for PV installations via the use of 3/8", M8 or M10 bolts.

#### Snow Retention Applications

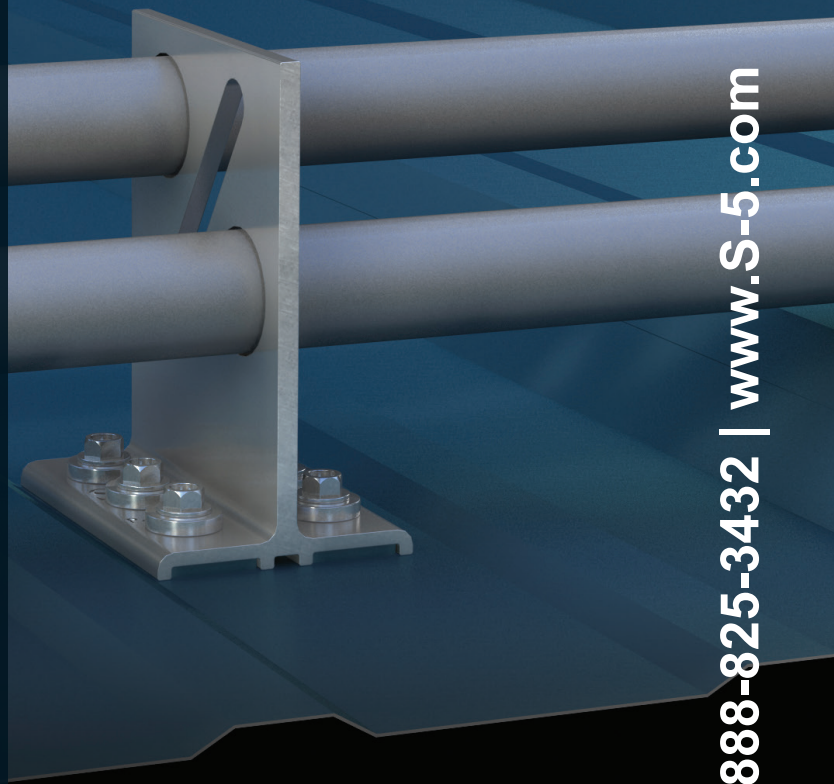
VersaGard can dramatically reduce the risks associated with snow avalanches sliding off of roofs, dumping tons of snow onto anything in its path, at an amazingly affordable price. A VersaGard pipe snow retention system functions without cluttering the lines of the roof and is dramatically stronger than adhesively-mounted snow guards.

#### Solar Applications

VersaGard can also be used in lieu of an L-foot to support the installation of photovoltaic panels. VersaGard works with most rail or racking systems, and can be oriented parallel or perpendicular to the roof line.



**VersaGard™**



**888-825-3432 | [www.S-5.com](http://www.S-5.com)**

VersaGard™ is a strong, versatile, and affordable exposed-fastened solution for mounting snow retention and solar panels.

To accommodate various rib heights and to support one- or two-pipe preferences, **VersaGard™** comes with two 1.05" holes (1" pipe not included). To support PV installation, the diagonal "slot" provides height flexibility.

VersaGard can be installed parallel (for snow retention or PV installations) or perpendicular to the rib (for PV installations).

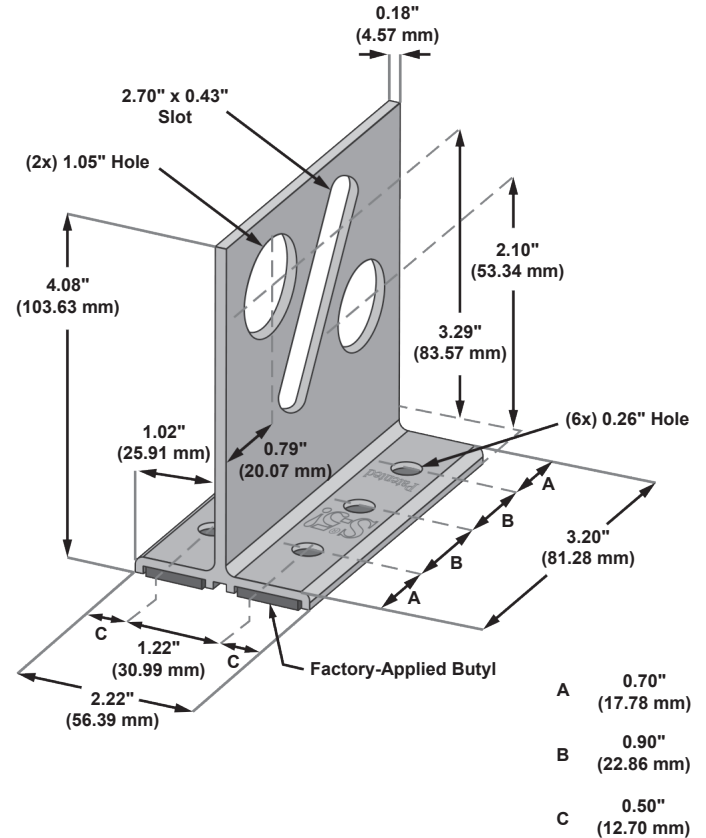
Each VersaGard comes with factory-applied butyl sealant in the base. A structural aluminum attachment bracket, VersaGard is compatible with most common metal roofing materials. For design assistance, ask your distributor. Also, please visit our website for more information including CAD details, metallurgical compatibilities, and specifications.

The VersaGard has been tested for load-to-failure results on wood decking, metal, and wood purlins. The independent lab test data found at [www.S-5.com](http://www.S-5.com) can be used for load-critical designs and applications. S-5!® holding strength is unmatched in the industry.

## Example Profile



## VersaGard™



6 holes are provided for versatility. Some installations require only 2 fasteners. See the load table on the S-5! website and the installation instructions for more details.

Attachment screws not included. Contact your distributor for information about hardware requirements.

### S-5!® Warning! Please use this product responsibly!

Products are protected by multiple U.S. and foreign patents. For published data regarding holding strength, bolt torque, patents, and trademarks, visit the S-5! website at [www.S-5.com](http://www.S-5.com).

Copyright 2014, Metal Roof Innovations, Ltd. S-5! products are patent protected. S-5! aggressively protects its patents, trademarks, and copyrights. Version 102814.

Distributed by



**DESIGN  
COMPONENTS,  
INC.**

# S-5!®

## The Right Way!

The right way to attach almost anything to metal roofs!

## Installation Instructions

**S-5!® Warning!** Please use these products responsibly! Visit our website or contact your S-5! distributor for available load test results. The user and/or installer of these parts is responsible for all necessary engineering and design to ensure the VersaGard™ has been properly spaced and configured.

**Notice to S-5! users:** Due to the many variables involved with specific panel products, climates, snow melt phenomena, and job particulars, the manufacturer cannot and does not express any opinions as to the suitability of any S-5! assembly for any specific application and assumes no liability with respect thereto. S-5! products are tested for ultimate holding strength on various profile types and materials. This information is available from the S-5! website: [www.S-5.com](http://www.S-5.com).

These install instructions serve to illustrate the correct procedure for securing the VersaGard to a roof. Proper bracket layout and frequency will vary on a job specific basis and should be determined by a qualified professional. This document is an installation guide only and the photographs and drawings herein are for the purpose of illustrating installation, tools and techniques, not system designs. Information contained within is intended to apply to the document as a whole.

**The VersaGard™ is made for trapezoidal, exposed-fastened profiles.**

## Tools Needed

- Screw Gun\*
- Rag
- String Line
- Tape Measure

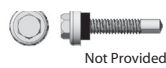
**\*For time saving tool recommendations contact S-5!**

VersaGard should be placed in the flat of the panel, between the ribs, and never straddling a striation. VersaGard must be mounted directly over and into the supporting structure of the roof, i.e. wood decking, wood or steel purlins, or trusses, NEVER into the metal roofing material alone. To accommodate various rib heights and to support one- or two-pipe snow retention preferences, VersaGard comes with two 1.05" holes (1" pipe not included). To support PV installation, the diagonal "slot" provides height flexibility.

To ensure brackets are installed in a straight line, install a single VersaBracket on each end of the roof at a measured consistent distance from the bottom edge of the roof. Use a string line between the two brackets. Mount the remaining VersaBracket along the string line, directly into the supporting structure of the roof.

## Use Proper Hardware

Only use appropriate screws, and hardware when attaching this product into the supporting structure.



Not Provided

**Metal to Metal Screw Specifications:** 1/4-14 Self Drilling Screw - 1-1/2" to 2-1/2" Length - 3/8" Hex Washer Head - Zinc/Aluminum Cap



Not Provided

**Metal to Wood Screw Specifications:** 1/4-14 Type 17-AB Milled Point - 1-1/2" to 2-1/2" Length - 3/8" Hex Washer Head - Zinc/Aluminum Cap

## To Install VersaGard™

1. Determine the location of the supporting structure of the roof. VersaGard can be installed parallel (for snow retention or PV installations) or perpendicular to the rib (for PV installations). When possible, secure VersaGard using all hole locations; when not possible, always use the two upslope hole locations. The only surface preparation necessary is to simply wipe away excess oil and debris.
2. Peel the release paper from the base, align, and apply to roof surface.
3. Secure the VersaGard by drilling screws through the pre-punched holes directly into the supporting structure of the roof. VersaGard is now ready for the attachment of PV rail or racking to the slotted hole or the placement of 1" pipe for snow retention.

**S-5!® Warning! Please use this product responsibly!**

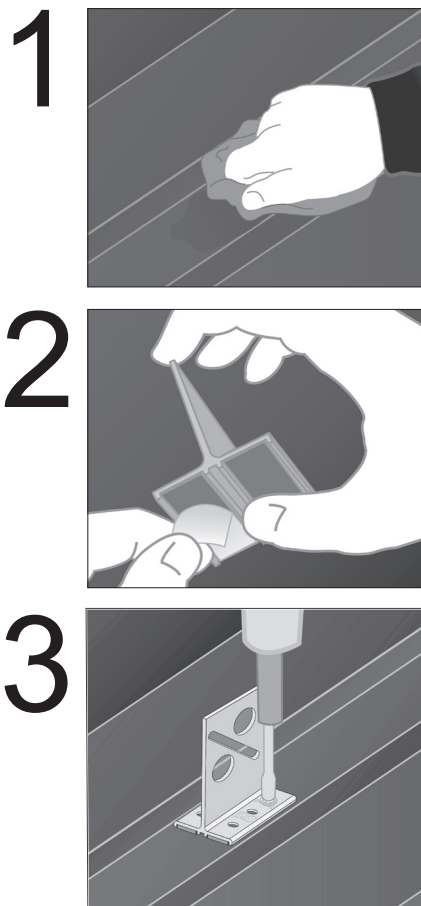
Products are protected by multiple U.S. and foreign patents. For published data regarding holding strength, fastener torque, patents, and trademarks, visit the S-5! website at [www.S-5.com](http://www.S-5.com).

Copyright 2014, Metal Roof Innovations, Ltd. S-5! products are patent protected.

S-5! aggressively protects its patents, trademarks, and copyrights. Version 092514.

These instructions are for use by those experienced in the trade. Always follow appropriate safety precautions and use appropriate tools.

VGI-V1.0-0915



VersaGard™ Install

888-825-3432 | [www.S-5.com](http://www.S-5.com)