



METALWALK®



ROOFTOP WALKWAY & SAFETY HANDRAIL

BY DESIGN COMPONENTS, INC.

WHAT IS METALWALK®?

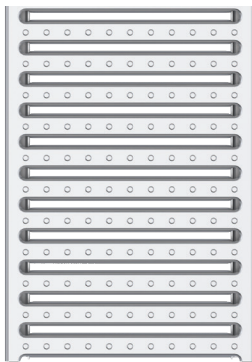
Our METALWALK® Rooftop Walkway System (CSI Division #07 7246) simultaneously protects your roof from foot traffic damage and protects your employees from slips, trips and falls by giving them a sturdy way to access your rooftop equipment. In conjunction with our optional Safety Handrail System, the METALWALK® Rooftop Walkway System does not penetrate any standing seam metal roof panels and is fully tested to be OSHA compliant. It can easily be paired with products such as ladders, stairs, and roof hatches.

METALWALK® FEATURES & BENEFITS

- Galvanized Steel is compatible to roof systems
- Protects roof from dishing or puncturing due to foot traffic
- Non-skid surface assures sure footing in all weather conditions
- Does not penetrate Standing Seam roof panels
- Available for "R" Panel attachment
- 12" wide interlocking planks allows flexibility in design
- Installs quickly and easily with only hand tools
- Walkway only available

METALWALK® OPTIONS

- Pitch corrected walkways (Perpendicular Runs)
- 4" Toeboards
- Powdercoat Paint Finishes
- Stair transitions



12" wide planks top view

SAFETY HANDRAIL FEATURES & BENEFITS

- 1.9" OD pipe with corrosion resistant fittings
- Smooth surfaces prevent injury
- No SSR panel penetrations protect roof
- 42" high with mid-rail support
- 200 lb. lateral load meets OSHA specifications
- Installs on one or both sides of METALWALK® for design flexibility
- Installs quickly and easily with only hand tools
- Handrail only available

SAFETY HANDRAIL OPTIONS

- Powdercoat Paint Finishes
- Self closing safety gates

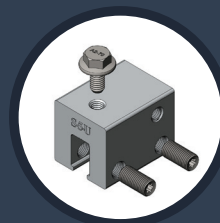


36" wide walkway with safety handrail and support plates

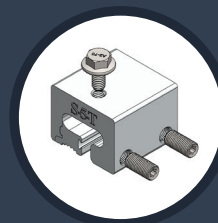
ROOF ATTACHMENT

METALWALK® easily attaches to a variety of roof panels using S-5!® clamps. Panels include:

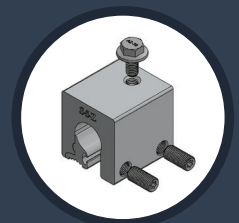
- Trapezoid SSR
- Vertical SSR
- T-Rib / L-Rib Type SSR
- Rib Panel (Fab-Lok® Fastener Attachment)



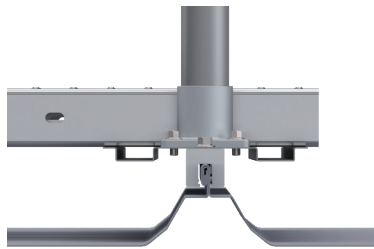
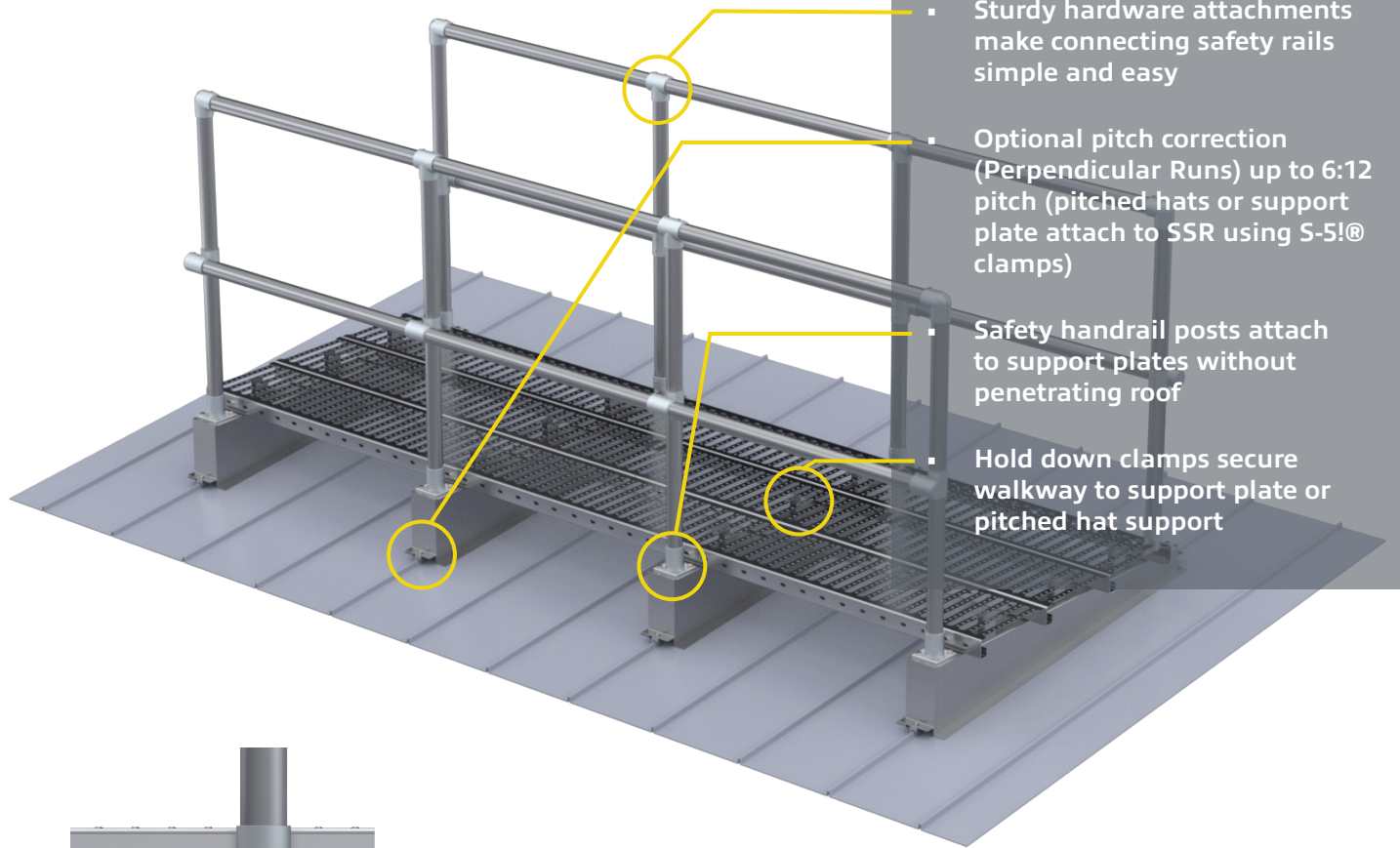
S-5-U CLAMP



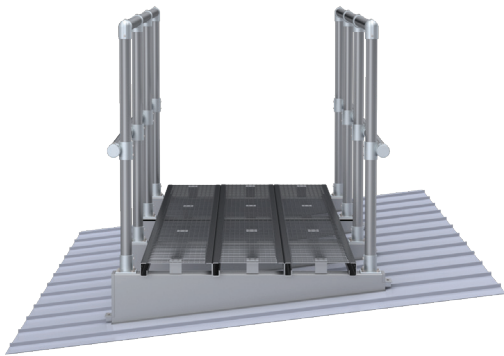
S-5-T CLAMP



S-5-Z CLAMP



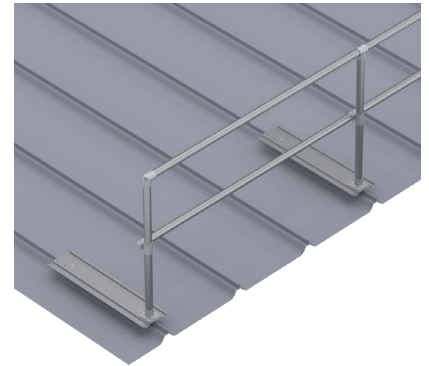
S-5!® Clamp roof attachment close-up



36" wide walkway with safety handrail, pitch corrected



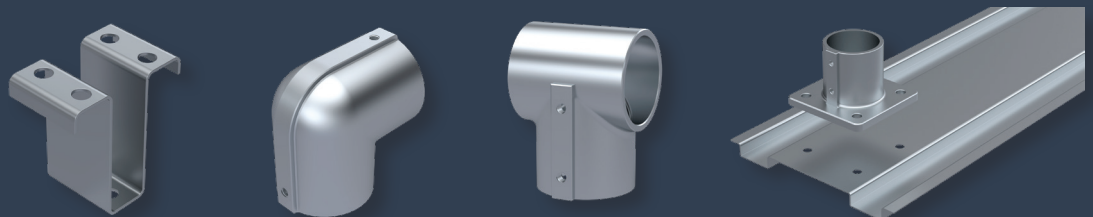
Ladder railing transition



Perimeter safety handrail only

HARDWARE

METALWALK® installs simply and securely with sturdy hardware, using mostly hand tools.





MAX DESIGN LOADS

RAILING:

- Concentrated: 200 LB
- Distributed: 20 PLF

GRATING:

- Concentrated: 300 LB
- Distributed: 40 PSF

NOTE:

- OSHA Compliant max post spacing = 72" O/C (Standard System) for railing to meet 20 PLF
- Max post spacing = 48" O/C (Optional System) for railing to meet 50 PLF

CSI DIV# 07 7246



DESIGN COMPONENTS, INC.
115 Walter Way Fayetteville, GA 30214
800.868.9910 • sales@designcomponents.com

WWW.DESIGNCOMPONENTS.COM